



*jordan fishwick*

**MACCLESFIELD**  
Moss Lane



# Moss Lane, Macclesfield, SK11 7XE

£1,000 PCM



## The Property

\*\*\*\*\*MULTIPLE OFFERS RECEIVED\*\*\*\*\*

This two double bedroom semi detached is presented in immaculate condition, close to local shops and within walking distance of Macclesfield town centre and the train station this two double bedroom semi detached is ideal for the professional or small family

Entrance porch, lounge with wood laminate effect flooring, dining kitchen with electric cooker, washing machine and fridge freezer along with access to fully enclosed rear garden. To the first floor two good sized double bedrooms both with fitted wardrobes and bathroom with shower over bath.

Enclosed rear garden, off road parking for up to 2 cars. Contact Macclesfield 01625 502222  
 £1000.00pcm  
 COUNCIL TAX C  
 EPC

## Directions

SK11 7XE



Google Map data ©2024

- TWO DOUBLE BEDROOMS
- MODERN FITTED KITCHEN AND BATHROOM
- OFF ROAD PARKING
- ENCLOSED REAR GARDEN
- EPC E
- COUNCIL TAX C

Postcode - SK11 7XE

EPC Rating - E

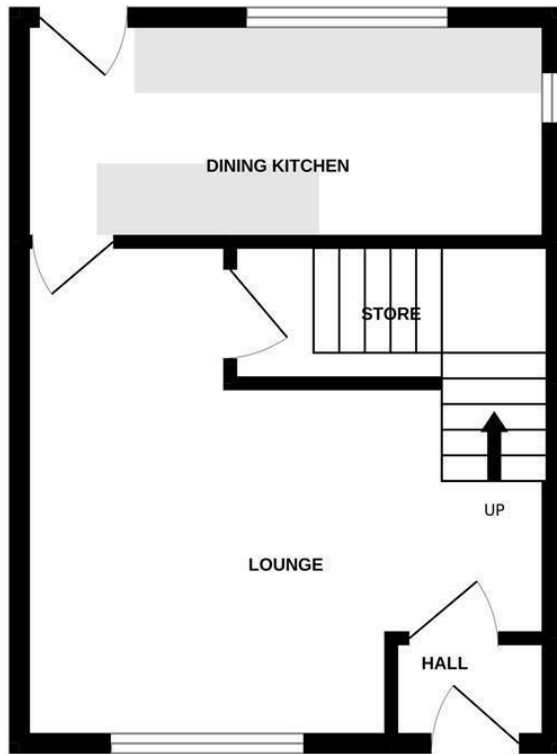
Floor Area - sq ft

Local Authority - Cheshire East

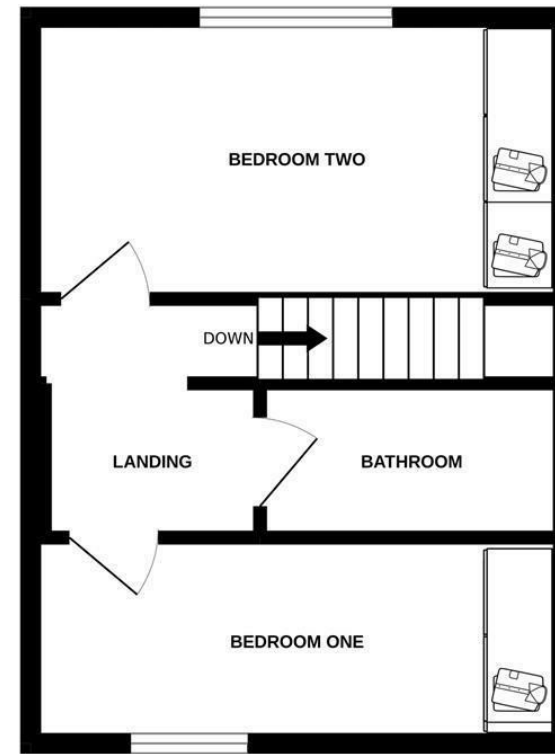
Council Tax - C



GROUND FLOOR



1ST FLOOR



Measurements are approximate. Not to scale. Illustrative purposes only.  
Made with Metropix ©2022



These particulars are believed to be accurate but they are not guaranteed and do not form a contract. Neither Jordan Fishwick nor the vendor or lessor accept any responsibility in respect of these particulars, which are not intended to be statements or representations of fact and any intending purchaser or lessee must satisfy himself by inspection or otherwise as to the correctness of each of the statements contained in these particulars. Any floorplans on this brochure are for illustrative purposes only and are not necessarily to scale.

Offices at: Chorlton, Didsbury, Disley, Hale, Glossop, Macclesfield, Manchester Deansgate, Manchester Whitworth Street, New Mills, Sale, Wilmslow and Withington

01625 502222

macc@jordanfishwick.co.uk  
www.jordanfishwick.co.uk