



jordan fishwick

WEST DIDSBURY
Larke Rise



Larke Rise, West Didsbury, M20 2UL

Guide Price £395,000



The Property

A most IMPRESSIVE penthouse apartment located within the POPULAR LARKE RISE DEVELOPMENT, standing in LANDSCAPED grounds off Mersey Road in a GREAT LOCATION between Didsbury and West Didsbury Villages. 1159 sq ft. The stylish living space is well planned with numerous noteworthy features including two double bedrooms with ample space for freestanding furniture and the main with a modern en-suite shower room, large open plan kitchen/living area with integrated appliances and direct access to a generous south facing balcony, main bathroom with modern white suite and chrome fittings, additional mezzanine bedroom/living space and a generous L-shaped entrance hall with built-in storage cupboards. The apartment enjoys a prime position within the block in addition to a large communal entrance area with security intercom & lift access to all floors, well-tended communal grounds and two allocated parking spaces.

Directions

M20 2UL



- Impressive penthouse apartment
- Popular gated development
- Great location in West Didsbury
- Two double bedrooms & additional mezzanine
- Main bathroom & en-suite
- Large open plan living area/kitchen
- Generous southerly facing balcony
- Lift access to all floors
- Two allocated spaces
- Close to Metrolnk, schools & nurseries

Postcode - M20 2UL

EPC Rating - D

Floor Area - 1159.00 sq ft

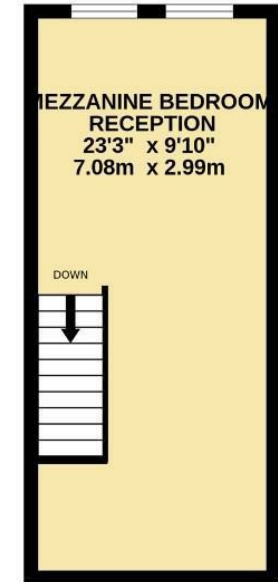
Local Authority - Manchester City Council

Council Tax - D



TOP FLOOR
934 sq.ft. (86.8 sq.m.) approx.

MEZZANINE LEVEL
225 sq.ft. (20.9 sq.m.) approx.



TOTAL FLOOR AREA : 1159 sq.ft. (107.7 sq.m.) approx.
Measurements are approximate. Not to scale. Illustrative purposes only
Made with Metropix ©2024



These particulars are believed to be accurate but they are not guaranteed and do not form a contract. Neither Jordan Fishwick nor the vendor or lessor accept any responsibility in respect of these particulars, which are not intended to be statements or representations of fact and any intending purchaser or lessee must satisfy himself by inspection or otherwise as to the correctness of each of the statements contained in these particulars. Any floorplans on this brochure are for illustrative purposes only and are not necessarily to scale.

Offices also at: Wilmslow, Macclesfield, Hale, Sale, Chorlton, Glossop, Manchester & Salford

757-759 Wilmslow Road, Didsbury Village, Manchester

0161 445 4480

didsbury@jordanfishwick.co.uk
www.jordanfishwick.co.uk