



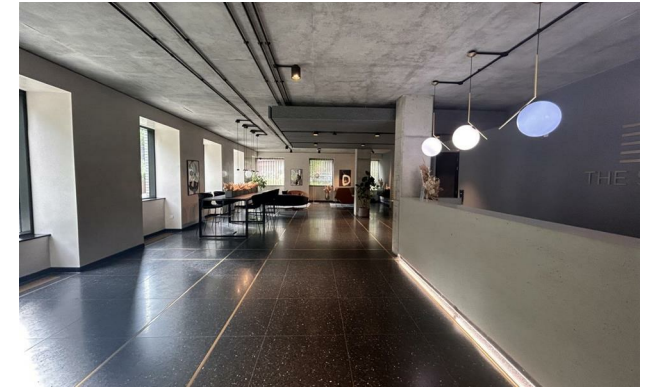
jordan fishwick

Apt 81, The Stile Meadowside, 17 Aspin
£1,625 Per Calendar Month



Meadowside Manchester M4 4GR

£1,625 Per Calendar Month



The Property

Available Mid July!


BRAND NEW, Never lived in Apartment in The Stile, part of the Meadowside Development just by Angel Meadows Park. This development boasts on site concierge, residents' services such as co working space, residents' lounge & Balcony, Gym and Studio, included in your rental cost.

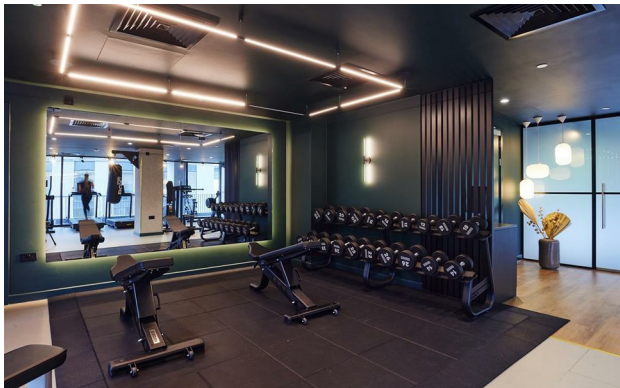
Apt 81 is a 15th Floor, Two double bedroom CORNER aspect apartment offering an abundance of light and has high spec fixtures and fittings throughout. There are two double bedrooms, each containing built in wardrobes, and an en-suite bathroom off the master bedroom. Unfurnished, White goods (Including Washer Drier) Included, and blinds. Council Tax Band D. EPC rating C. CAN BE FURNISHED FOR £1675PCM

VIDEO/ PHOTO OFFERS NOT ACCEPTED - PLEASE CALL TO BOOK A VIEWING

- Available Mid July
- Two Double Bedrooms
- Furnished or Unfurnished
- Close to Angel Meadows Park



Energy Efficiency Rating		
	Current	Potential
Very energy efficient - lower running costs		
(92 plus) A		
(81-91) B		80
(69-80) C		
(55-68) D		
(39-54) E		
(21-38) F		
(1-20) G		
Not energy efficient - higher running costs		
England & Wales	EU Directive 2002/91/EC 	





These particulars are believed to be accurate but they are not guaranteed and do not form a contract. Neither Jordan Fishwick nor the vendor or lessor accept any responsibility in respect of these particulars, which are not intended to be statements or representations of fact and any intending purchaser or lessee must satisfy himself by inspection or otherwise as to the correctness of each of the statements contained in these particulars. Any floorplans on this brochure are for illustrative purposes only and are not necessarily to scale.

Offices at: Offices at Chorlton, Didsbury, Disley, Hale, Glossop, Macclesfield, Manchester Deansgate, Manchester Whitworth Street, New Mills, Sale, Wilmslow and Withington