



JORDAN FISHWICK
EXCLUSIVE

| St Margarets Road | Altrincham





£13,000 PCM

Features

- Simply Stunning!
- Beautiful interior design
- Over three floors
- 4/5 bedrooms
- Council Tax Band H
- EPC Rating - B
- Great Location
- Gym and Sauna

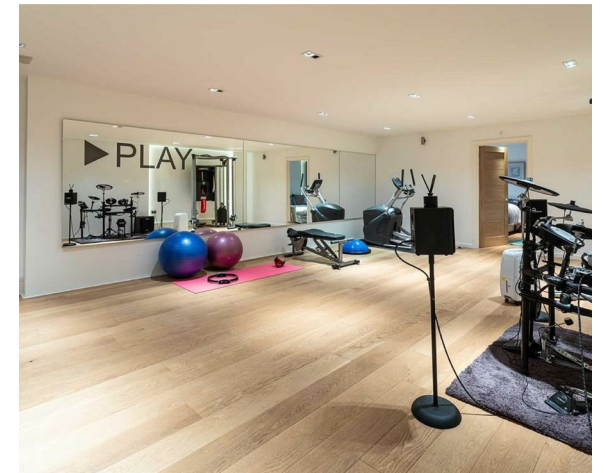


A beautiful detached residence nestled in private grounds off St. Margaret's Rd and built to an exacting level of finish by renowned local builder. The property enjoys approximately 5500sq ft of lavishly appointed accommodation over 3 levels, together with self-contained suite of rooms, detached garage and private south-facing courtyard garden perfect for entertaining. Call us to view - 0161 929 9797



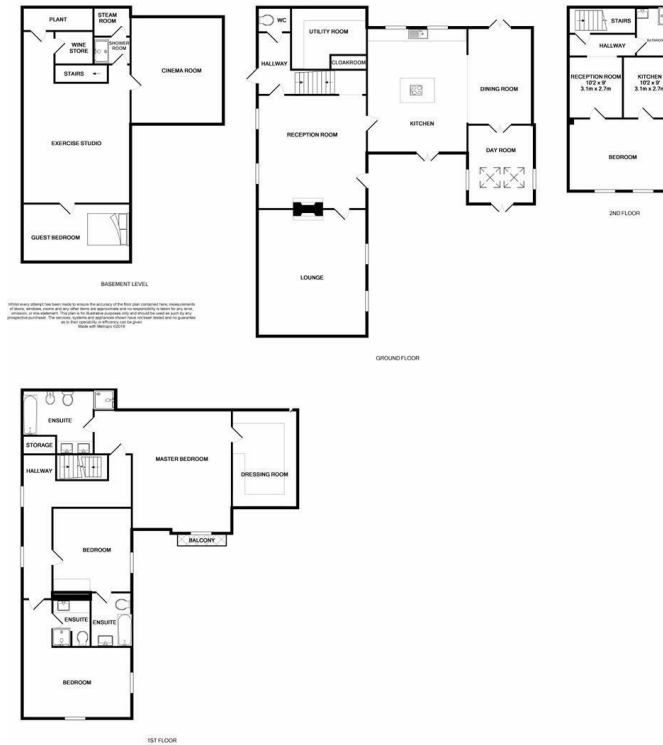
General information

- Tax Band: H
- Sqft: sq ft
- Plot: acre(s)
- Bedrooms: 4
- Bathrooms: 4
- Postcode: WA14 2AR

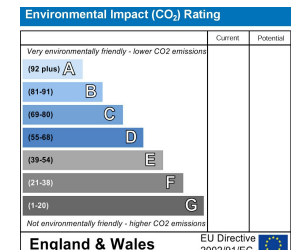
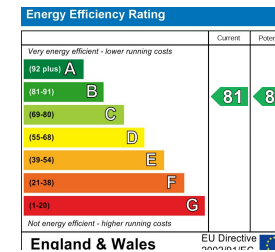








IMPORTANT: we would like to inform prospective purchasers that these sales particulars have been prepared as a general guide only. A detailed survey has not been carried out, nor the services, appliances and fittings tested. Room sizes should not be relied upon for furnishing purposes and are approximate. If floor plans are included, they are for guidance only and illustration purposes only and may not be to scale. If there are any important matters likely to affect your decision to buy, please contact us before viewing the property.



JORDAN FISHWICK
EXCLUSIVE

Jordan Fishwick
172 Ashley Road, Altrincham, Cheshire, WA15 9SF
0161 929 9797
hale@jordanfishwick.co.uk
www.jfexclusive.co.uk