



*Jordan* fishwick

9 ARDERNE PLACE ALDERLEY EDGE SK9 7EN  
PCM £1,200 PCM

## 9 ARDERNE PLACE ALDERLEY EDGE SK9 7EN

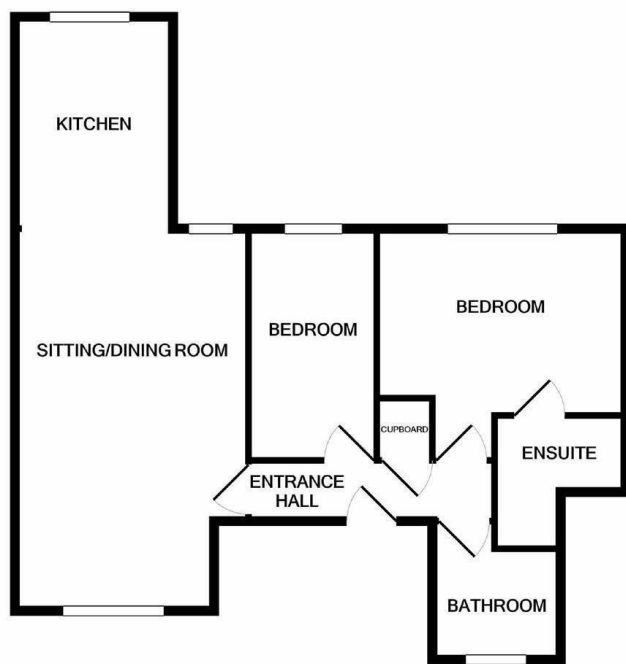
AVAILABLE NOW FURNISHED

A self contained first floor apartment forming part of a small prestigious development right in the heart of this sought after village.

Beautifully presented accommodation ideal for the professional person/couple, with gas fired heating, double glazing, carpets, curtains and blinds.

Comprises: communal hall with entry phone system, main hall, lounge/dining room, open to fitted kitchen with appliances, main bedroom with built in wardrobes and luxury en-suite shower room, single bedroom and main bathroom. Allocated Parking.

Contact Wilmslow 01625 536300 £1200.00pcm



Measurements are approximate. Not to scale. Illustrative purposes only  
Made with Metropix ©2020



- CENTRAL VILLAGE LOCATION
- ALLOCATED PARKING
- TWO BEDROOMS
- IDEAL FOR PROFESSIONAL COUPLE OR SINGLE
- COUNCIL TAX D

Energy Efficiency Rating		Environmental Impact (CO <sub>2</sub> ) Rating			
Very energy efficient - lower running costs	Current	Potential	Very environmentally friendly - lower CO <sub>2</sub> emissions	Current	Potential
(92 plus) A			(92 plus) A		
(81-91) B			(81-91) B		
(69-80) C			(69-80) C		
(55-68) D			(55-68) D		
(39-54) E			(39-54) E		
(21-38) F			(21-38) F		
(1-20) G			(1-20) G		
Not energy efficient - higher running costs			Not environmentally friendly - higher CO <sub>2</sub> emissions		
England & Wales		EU Directive 2002/91/EC		England & Wales	