



jordan fishwick

9a Bourne Street, SK9 5HD
Guide Price £429,950



Bourne Street Wilmslow SK9 5HD

Guide Price £429,950



A charming period three bedroom semi detached property offered to the market with No Onward Vendor Chain. Positioned within walking distance of Wilmslow town centre, being located within the highly desirable and much sought after South Wilmslow area the property requires modernisation to realise its full potential, whilst having a multitude of individuality and features. The deceptively large accommodation needs to be viewed to be appreciated, with the garden to the rear benefiting from a generous plot with a high level of privacy and a mature and leafy outlook. Convenient for local shops, amenities, schools and transport links. Comprising: two large reception rooms, with a living room to the front and dining room to the rear with a set of windows to three aspects providing a massive source of natural light. The kitchen is located between the two reception rooms dividing the ground floor. There is also a downstairs WC. To the first floor there are three well-proportioned bedrooms with a large landing or study space leading to bedrooms two and three. There is a bathroom with traditional bathroom suite. Gardens to the front and rear are both well stocked and established with the wonderful rear garden having a mature private aspect comprising lawn and well stocked beds with stone flagged paths. NO CHAIN.



- Period Property
- No Chain
- Excellent Location
- Three bedrooms
- Large landing space / Study area
- Beautiful and well stocked garden
- Excellent potential
- In need of some updating



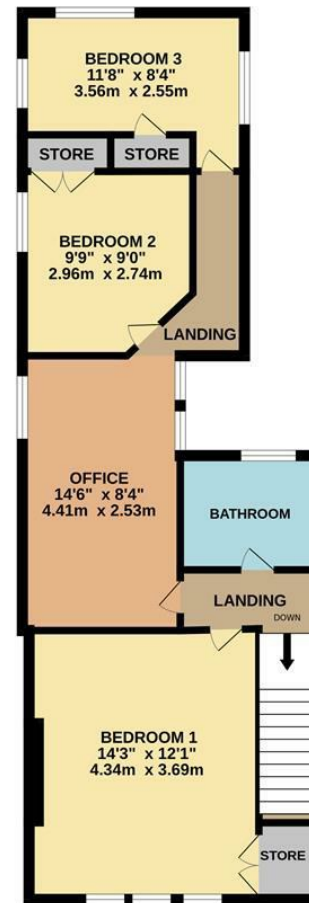
Energy Efficiency Rating		
	Current	Potential
Very energy efficient - lower running costs		
(92 plus) A		
(81-91) B		81
(69-80) C		
(55-68) D	63	
(39-54) E		
(21-38) F		
(1-20) G		
Not energy efficient - higher running costs		
England & Wales	EU Directive 2002/91/EC	



GROUND FLOOR



1ST FLOOR



Measurements are approximate. Not to scale. Illustrative purposes only.
Made with Metropix ©2024



These particulars are believed to be accurate but they are not guaranteed and do not form a contract. Neither Jordan Fishwick nor the vendor or lessor accept any responsibility in respect of these particulars, which are not intended to be statements or representations of fact and any intending purchaser or lessee must satisfy himself by inspection or otherwise as to the correctness of each of the statements contained in these particulars. Any floorplans on this brochure are for illustrative purposes only and are not necessarily to scale.

Offices at: Chorlton, Didsbury, Disley, Hale, Glossop, Macclesfield, Manchester Deansgate, Manchester Whitworth Street, New Mills, Sale, Wilmslow and Withington

36-38 Alderley Road, Wilmslow, Cheshire, SK9 1JX

01625 532000

wilmslow@jordanfishwick.co.uk

www.jordanfishwick.co.uk