



jordanfishwick

Lytham Avenue
Chorlton



Lytham Avenue Chorlton M21 8TF

£1,850 Per Calendar Month



The Property

****AVAILABLE NOW **** We are delighted to offer this beautifully presented 3 bedroom Period situated on a quiet cul-de-sac in the centre of Chorlton. The Property is stylishly decorated and furnished throughout and offers spacious light living.

The property benefits from an enclosed courtyard private garden to the rear. The Ground floor comprises of large entrance & hallway with cupboard under stairs, large lounge with ornate fireplace and modern wooden blinds, open plan large kitchen/diner, To the first floor there are two double bedrooms and smaller front bedroom/currently used as an office, family bathroom with shower over bath. To the front of the property there is ample room for parking directly in front of the property, to the rear there is a large enclosed courtyard garden with a secure gated alleyway. Gas central heating is installed throughout and an internal viewing of this fine home is most highly recommended.

***** To arrange a viewing please call 0161 393 7539

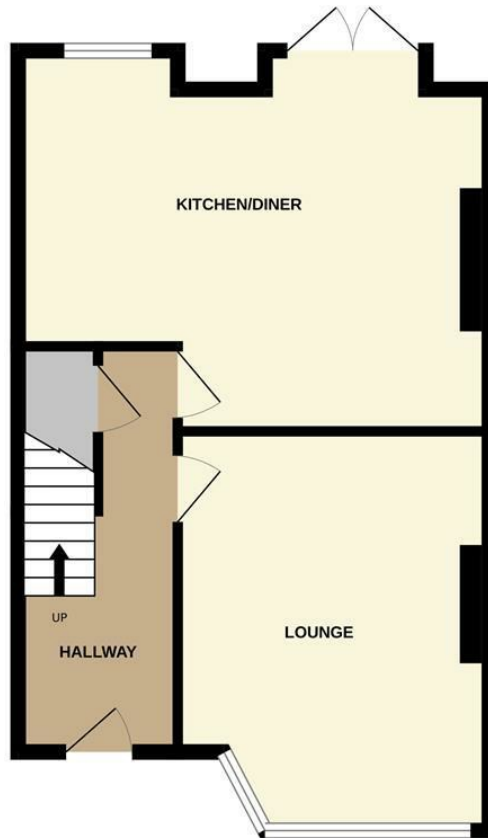
Directions

- Council Tax Band B - EPC D
- 3 Bedroom Period Terrace
- Spacious Throughout
- Stylish Furnishing throughout
- Central Chorlton Location
- Private enclosed Courtyard Garden
- Available Now

Postcode - M21 8TF
EPC Rating - D
Floor Area - sq ft
Local Authority - Manchester
Council Tax - B



GROUND FLOOR
480 sq.ft. (44.6 sq.m.) approx.



1ST FLOOR
435 sq.ft. (40.4 sq.m.) approx.



TOTAL FLOOR AREA : 915 sq.ft. (85.0 sq.m.) approx.

Whilst every attempt has been made to ensure the accuracy of the floorplan contained here, measurements of doors, windows, rooms and any other items are approximate and no responsibility is taken for any error, omission or mis-statement. This plan is for illustrative purposes only and should be used as such by any prospective purchaser. The services, systems and appliances shown have not been tested and no guarantee as to their operability or efficiency can be given.
Made with Metropix ©2024



These particulars are believed to be accurate but they are not guaranteed and do not form a contract. Neither Jordan Fishwick nor the vendor or lessor accept any responsibility in respect of these particulars, which are not intended to be statements or representations of fact and any intending purchaser or lessee must satisfy himself by inspection or otherwise as to the correctness of each of the statements contained in these particulars. Any floorplans on this brochure are for illustrative purposes only and are not necessarily to scale.

Offices at: Offices at Chorlton, Didsbury, Disley, Hale, Glossop, Macclesfield, Manchester Deansgate, Manchester Whitworth Street, New Mills, Sale, Wilmslow and Withington

410-412 Barlow Moor Road, Chorlton, Manchester, M21
8AD

www.jordanfishwick.co.uk