



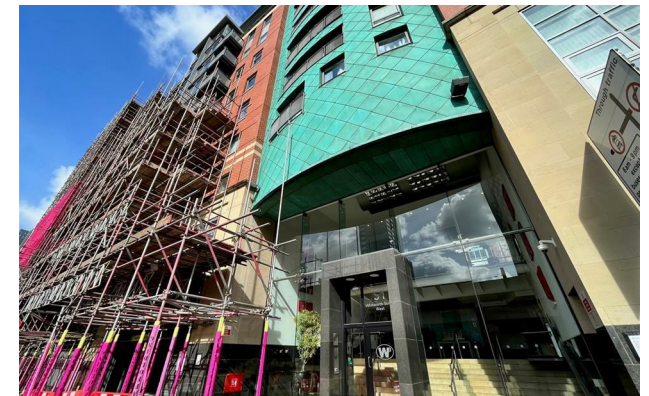
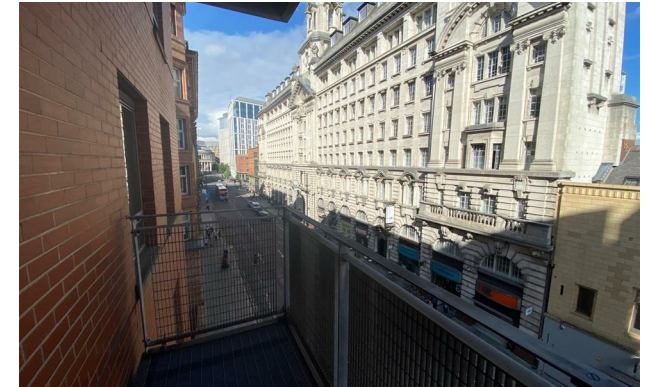
Jordan fishwick

Apt 426 W3, 51 Whitworth Street West, M1
£1,550 Per Calendar Month



W3 Manchester M1 5EB

£1,550 Per Calendar Month



The Property

Available Mid August. This 4th floor larger than average two double bedroom apartment is located in the very popular and conveniently located W3 Building, close to the Palace Theatre and Oxford Rd Train Station. This immaculate apartment comes has been fully redecorated and re carpeted throughout, TWO SEPERATE SECURE PARKING SPACES. The apartment comprises of entrance hall, open plan living/dining/kitchen room with fitted appliances with access to balcony overlooking Oxford Road and the Opera House. The master bedroom has a dressing area and en-suite shower, second double bedroom with built in desks 24 hour on-site concierge, Fully Furnished. Great for students/professionals needing to be close to the central university campuses. Tax Band E. EPC Rating B.

NIL Deposit Option Available! Contact the branch for more information on Reposit - T's & C's Apply.

VIDEO/ PHOTO OFFERS NOT ACCEPTED - PLEASE BOOK AN IN PERSON VIEWING

- Available Mid August
- Fourth Floor Apartment
- Two Double Bedrooms & Two Bathrooms
- Tax Band E
- EPC Rating B
- Balcony
- Two Separate Parking Spaces
- 24 Hour Concierge
- Furnished



Energy Efficiency Rating		
	Current	Potential
Very energy efficient - lower running costs		
(92 plus) A		
(81-91) B	84	84
(69-80) C		
(55-68) D		
(39-54) E		
(21-38) F		
(1-20) G		
Not energy efficient - higher running costs		
England & Wales	EU Directive 2002/91/EC	





These particulars are believed to be accurate but they are not guaranteed and do not form a contract. Neither Jordan Fishwick nor the vendor or lessor accept any responsibility in respect of these particulars, which are not intended to be statements or representations of fact and any intending purchaser or lessee must satisfy himself by inspection or otherwise as to the correctness of each of the statements contained in these particulars. Any floorplans on this brochure are for illustrative purposes only and are not necessarily to scale.

Offices at: Offices at Chorlton, Didsbury, Disley, Hale, Glossop, Macclesfield, Manchester Deansgate, Manchester Whitworth Street, New Mills, Sale, Wilmslow and Withington