



jordanfishwick

Market Street
Hyde



**Market Street Hyde SK14
8JA**

£825 Per Calendar Month



The Property

AVAILABLE NOW A stone built mid terraced house with living space arranged over three floors and including a useful cellar. Briefly comprising an entrance vestibule, front lounge, spacious dining kitchen and utility porch, cellar, two first floor bedrooms, bathroom and a spiral staircase leads up to the attic which has a skylight window. Frontage and a gated, shared rear garden. Energy Rating C

Directions

- Stone Built Mid Terraced House
- Two Bedrooms & Attic
- EPC C & Council Tax A
- Utility Porch
- Useful Cellar Storage
- Shared Gardens

Postcode - SK14 8JA

EPC Rating - C

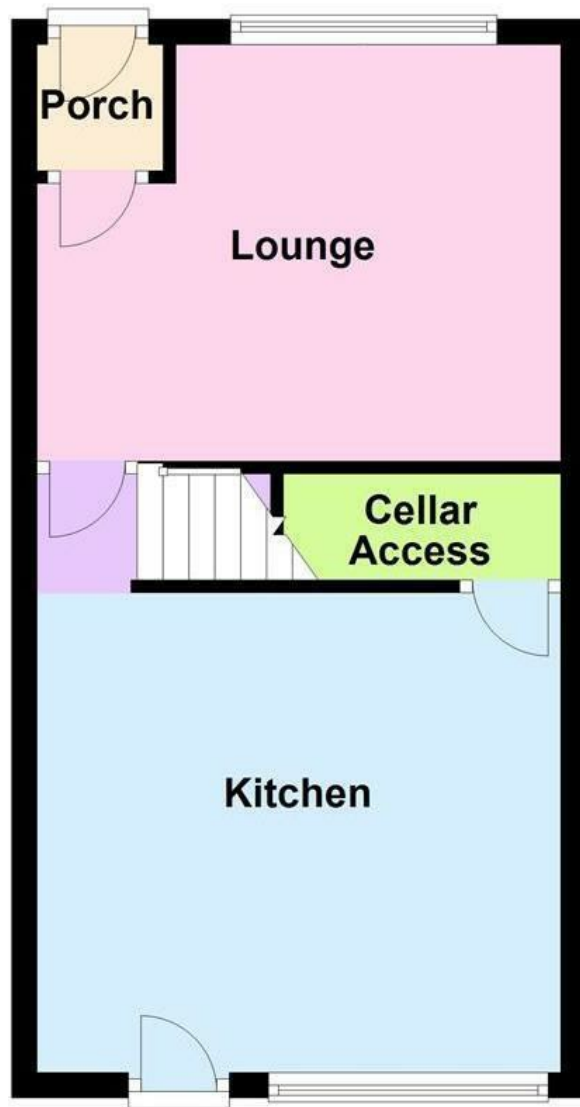
Floor Area - sq ft

Local Authority - Tameside Metropolitan Borough

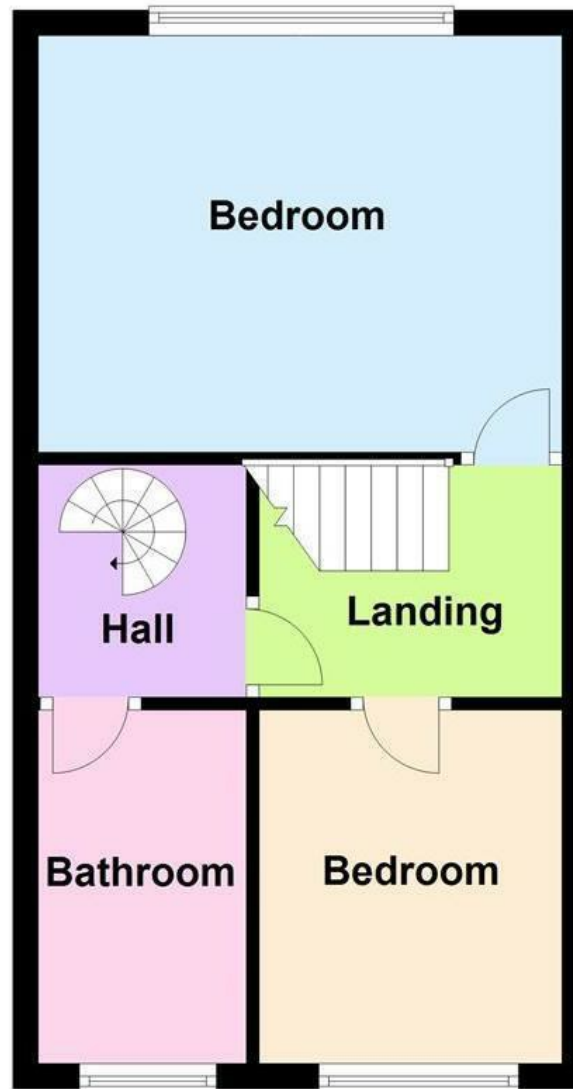
Council Tax - A



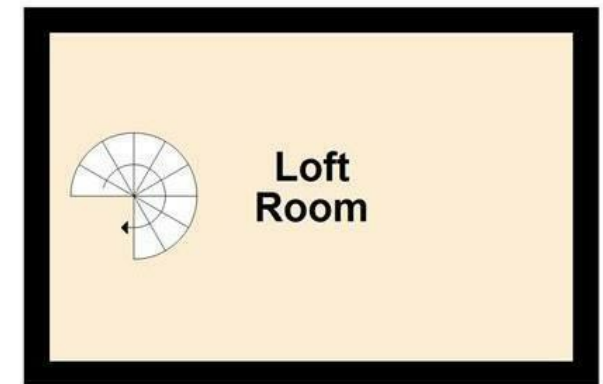
Ground Floor



First Floor



Second Floor



These particulars are believed to be accurate but they are not guaranteed and do not form a contract. Neither Jordan Fishwick nor the vendor or lessor accept any responsibility in respect of these particulars, which are not intended to be statements or representations of fact and any intending purchaser or lessee must satisfy himself by inspection or otherwise as to the correctness of each of the statements contained in these particulars. Any floorplans on this brochure are for illustrative purposes only and are not necessarily to scale.

Offices at: Offices at Chorlton, Didsbury, Disley, Hale, Glossop, Macclesfield, Manchester Deansgate, Manchester Whitworth Street, New Mills, Sale, Wilmslow and Withington

44 High Street West, Glossop, Derbyshire, SK13 8BH

01457 858888

glossop@jordanfishwick.co.uk
www.jordanfishwick.co.uk