



*jordan fishwick*

Martlet Avenue Disley Stockport



## Martlet Avenue Disley Stockport SK12 2JH

£550,000



### The Property

Set back from the road behind a beautifully maintained lawned garden frontage, a spacious and immaculately presented three double bedroom detached property. Located in a sought after established residential area within easy reach of Disley Village, boasting private southerly facing rear garden, parking for multiple cars and an integral 23ft garage, this versatile home is sure to impress. Comprising: entrance porch, hallway, living room, dining room, kitchen with Granite tops, superb conservatory, two ground floor bedrooms and a luxurious bathroom with roll top bath and separate shower, to the first floor there is a master bedroom with dressing room, en-suite shower room and ample storage areas. Viewing highly recommended.




- Superb Location
- South Facing Rear Garden
- Three Double Bedrooms
- 23ft Garage and Long Driveway
- Beautifully Presented Throughout
- Detached Dormer Property
- Within 1/4 of a mile of Disley Village
- High Spec Kitchen and Bathroom
- Pvc Double Glazing and Gas Central Heating

**Postcode** SK12 2JH

**EPC Rating** C

**Local Authority** Cheshire East

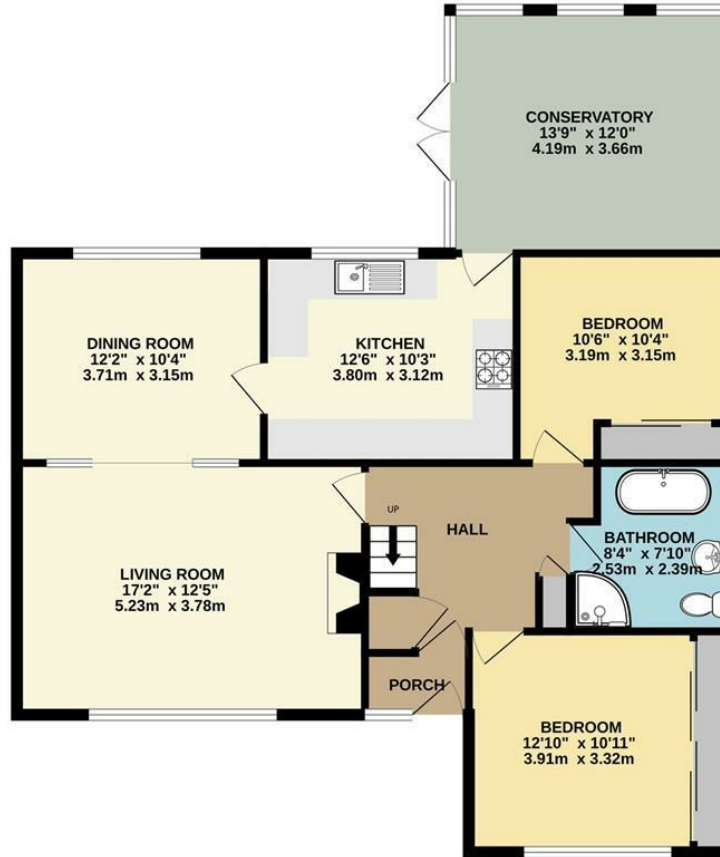
**Council Tax** F

Energy Efficiency Rating		Current	Potential
Very energy efficient - lower running costs			
(92 plus)	A		
(81-91)	B		81
(69-80)	C	71	
(55-68)	D		
(39-54)	E		
(21-38)	F		
(1-20)	G		
Not energy efficient - higher running costs			
<b>England &amp; Wales</b>		EU Directive 2002/91/EC 	





BASEMENT



GROUND FLOOR



1ST FLOOR

Whilst every attempt has been made to ensure the accuracy of the floorplan contained here, measurements of doors, windows, rooms and any other items are approximate and no responsibility is taken for any error, omission or mis-statement. This plan is for illustrative purposes only and should be used as such by any prospective purchaser. The services, systems and appliances shown have not been tested and no guarantee as to their operability or efficiency can be given.  
 Made with Metropix ©2024



These particulars are believed to be accurate but they are not guaranteed and do not form a contract. Neither Jordan Fishwick nor the vendor or lessor accept any responsibility in respect of these particulars, which are not intended to be statements or representations of fact and any intending purchaser or lessee must satisfy himself by inspection or otherwise as to the correctness of each of the statements contained in these particulars. Any floorplans on this brochure are for illustrative purposes only and are not necessarily to scale.

Offices at: Chorlton, Didsbury, Disley, Hale, Glossop, Macclesfield, Manchester Deansgate, Manchester Whitworth Street, New Mills, Sale, Wilmslow and Withington

14 Market Street, Disley, Cheshire, SK12 2AA

01663 76 78 78

disley@jordanfishwick.co.uk

www.jordanfishwick.co.uk