



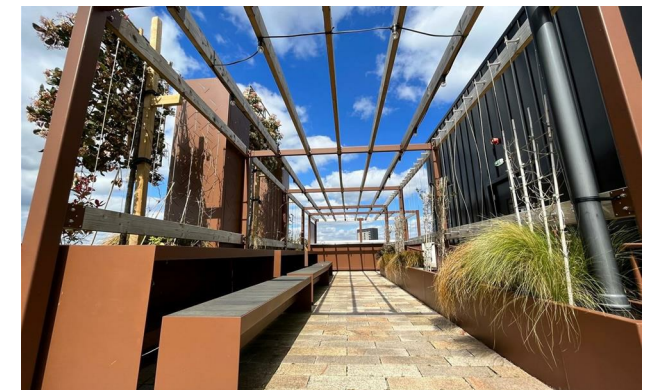
jordan fishwick

Apt 306 1F Spinners Way, Castlefield, M15
£1,470 Per Calendar Month



1F Spinners Way Manchester M15 4UZ

£1,470 Per Calendar Month



The Property

Available Mid July. Jordan Fishwick presents this LUXURIOUS 3rd floor apartment in this residential development in Manchester. A Modern apartment in the heart of the city's newest neighbourhood. Features include: RESIDENTS ROOFTOP BAR, outdoor yoga space and PRIVATE WINTER GARDEN. The property comprises of two double bedrooms & two bathrooms with a large open kitchen/ living room. As well as an enclosed terrace area off the dining area.

St George's Gardens interiors come with Walnut accented wall panelling, kitchens and bathroom cabinetry. Smooth, classic herringbone flooring with tonal blending compliments the luxurious bedroom carpets and bathroom tiles. Features lighting and smart controlled heating add an extra touch of luxury.


On the 11th floor, there is a rooftop garden which features a private residents bar, yoga space and social breakout areas with magnificent views of Manchester's ever expanding city centre skyline.

No Parking included/ Tax Band E. EPC Rating B.

VIDEO/ PHOTOS OFFERS ARE NOT ACCEPTED - PLEASE BOOK AN IN PERSON VIEWING

- Available Mid July
- Two Double bedrooms
- 3rd Floor
- Communal Rooftop Area
- On site concierge
- Tax Band E
- EPC Rating B
- No Pets / No parking
- Close to City Centre



Energy Efficiency Rating		
	Current	Potential
Very energy efficient - lower running costs		
(92 plus) A		
(81-91) B	85	85
(69-80) C		
(55-68) D		
(39-54) E		
(21-38) F		
(1-20) G		
Not energy efficient - higher running costs		
England & Wales	EU Directive 2002/91/EC 	





These particulars are believed to be accurate but they are not guaranteed and do not form a contract. Neither Jordan Fishwick nor the vendor or lessor accept any responsibility in respect of these particulars, which are not intended to be statements or representations of fact and any intending purchaser or lessee must satisfy himself by inspection or otherwise as to the correctness of each of the statements contained in these particulars. Any floorplans on this brochure are for illustrative purposes only and are not necessarily to scale.

Offices at: Offices at Chorlton, Didsbury, Disley, Hale, Glossop, Macclesfield, Manchester Deansgate, Manchester Whitworth Street, New Mills, Sale, Wilmslow and Withington