



jordan fishwick

DIDSBURY
Brooklawn Drive



Brooklawn Drive, Didsbury, M20 3GY

£595,000



The Property

A DELIGHTFUL, BAY FRONTED, THREE BEDROOM SEMI DETACHED FAMILY HOME LOCATED ON AN EXTREMELY POPULAR RESIDENTIAL ROAD WITH EASY ACCESS TO FOG LANE PARK & DIDSBURY VILLAGE. 1213 sq ft. The stylish living space has been greatly improved by the current owners with numerous noteworthy features including an impressive family kitchen extending over 19ft, lounge with cast iron fireplace, separate dining room with bay window, modern four piece bathroom with black fittings, three good sized bedrooms and a generous entrance hall. Original characteristics such as stripped floorboards, picture rails and panelled doors blend with the more modern comforts including double glazing and gas central heating. In addition, there is a boarded loft providing additional storage. Outside, a driveway leads to the attached garage with an enclosed garden to the rear, being laid mainly to lawn with flowerbed borders and shaped flagged patio. No chain.

Directions

M20 3GY



- Delightful bay fronted home
- Stylish living space
- Three good sized bedrooms
- Modern kitchen over 19ft
- Four piece bathroom suite
- Two separate receptions
- Electric vehicle charger
- Driveway & attached garage
- No onward chain
- Council Tax Band - D / EPC Rating - C

Postcode - M20 3GY

EPC Rating - E

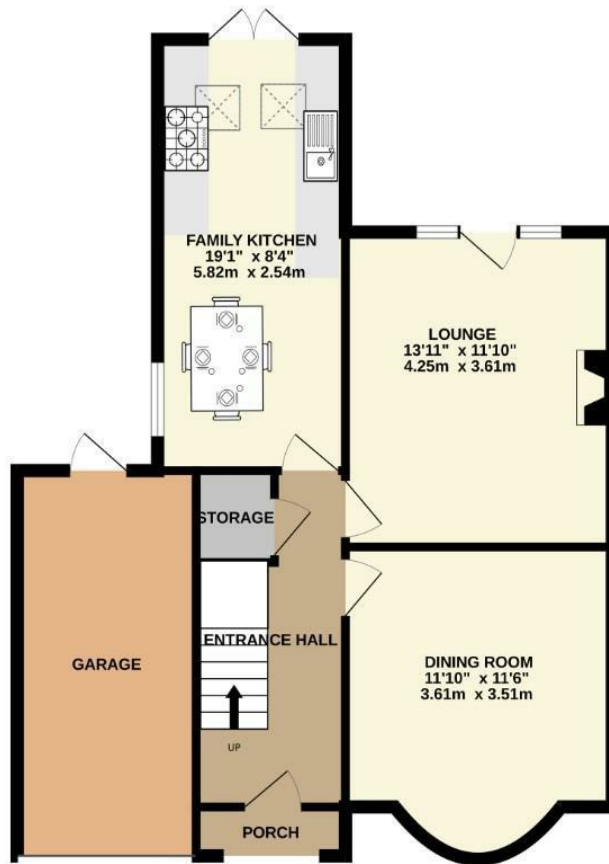
Floor Area - 1213.00 sq ft

Local Authority - Manchester City Council

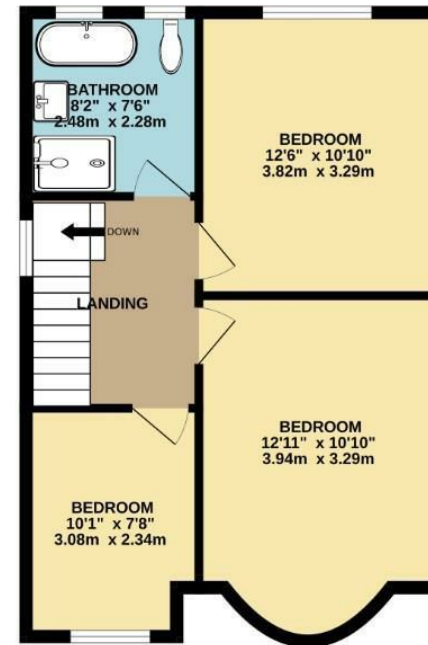
Council Tax - D



GROUND FLOOR
716 sq.ft. (66.5 sq.m.) approx.



1ST FLOOR
496 sq.ft. (46.1 sq.m.) approx.



TOTAL FLOOR AREA : 1213 sq.ft. (112.7 sq.m.) approx.
Measurements are approximate. Not to scale. Illustrative purposes only
Made with Metropix ©2024.



These particulars are believed to be accurate but they are not guaranteed and do not form a contract. Neither Jordan Fishwick nor the vendor or lessor accept any responsibility in respect of these particulars, which are not intended to be statements or representations of fact and any intending purchaser or lessee must satisfy himself by inspection or otherwise as to the correctness of each of the statements contained in these particulars. Any floorplans on this brochure are for illustrative purposes only and are not necessarily to scale.

Offices also at: Wilmslow, Macclesfield, Hale, Sale, Chorlton, Glossop, Manchester & Salford

757-759 Wilmslow Road, Didsbury Village, Manchester

0161 445 4480

didsbury@jordanfishwick.co.uk
www.jordanfishwick.co.uk