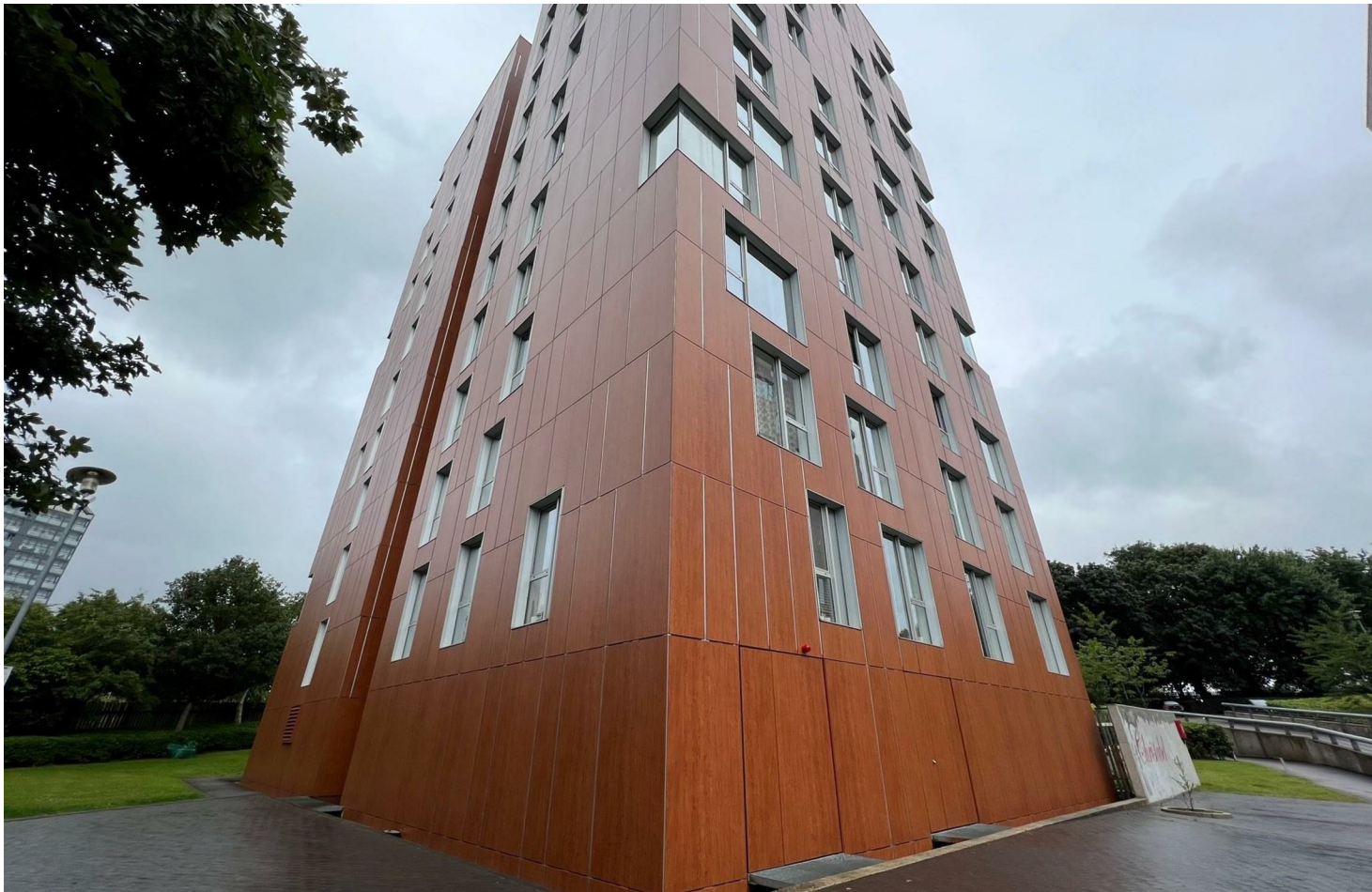




Jordan fishwick

Apt 705 Christabel, 106 Dalton Street, M40
£900 Per Calendar Month



Christabel Collyhurst M40 7EH

£900 Per Calendar Month

The Property


Available Mid July. The 2nd building of Three Towers, Christabel which is located just off Rochdale Rd, a short distance from the City Centre. This 7th floor one bedroom apartment comprises of an Entrance hall with built in wardrobes and storage, large corner living room with floor to ceiling windows, fitted kitchen with oven, hob and fridge. Good sized double bedroom, attractive bathroom suite with shower. Gated Parking. Furnished. Tax Band A. EPC Rating C. PROFESSIONALS ONLY.

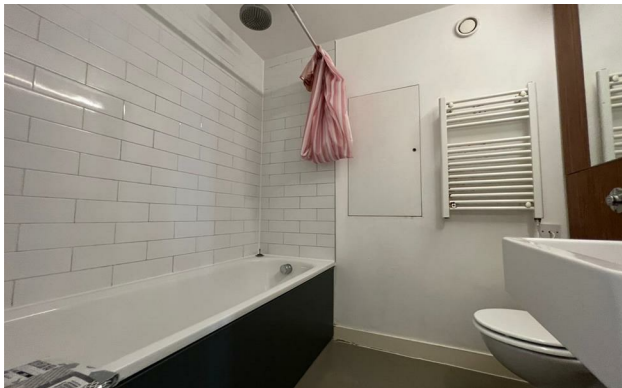
VIDEO/ PHOTO OFFERS NOT ACCEPTED - PLEASE BOOK AN IN PERSON VIEWING



- Available Mid July
- Corner Aspect
- Furnished
- 7th Floor One Bed
- Parking included
- Tax Band A



Energy Efficiency Rating		
	Current	Potential
Very energy efficient - lower running costs		
(92 plus) A		
(81-91) B		86
(69-80) C	76	
(55-68) D		
(39-54) E		
(21-38) F		
(1-20) G		
Not energy efficient - higher running costs		
England & Wales	EU Directive 2002/91/EC 	





These particulars are believed to be accurate but they are not guaranteed and do not form a contract. Neither Jordan Fishwick nor the vendor or lessor accept any responsibility in respect of these particulars, which are not intended to be statements or representations of fact and any intending purchaser or lessee must satisfy himself by inspection or otherwise as to the correctness of each of the statements contained in these particulars. Any floorplans on this brochure are for illustrative purposes only and are not necessarily to scale.

Offices at: Offices at Chorlton, Didsbury, Disley, Hale, Glossop, Macclesfield, Manchester Deansgate, Manchester Whitworth Street, New Mills, Sale, Wilmslow and Withington