



*jordan fishwick*

FALLOWFIELD  
Haydn Avenue



# Haydn Avenue, Fallowfield, M14 4DL

£220,000



## The Property

A spacious, well presented garden fronted three bedroom terrace property, suitable for a number of buyers including first time buyer or professional couple, well placed for Manchester City centre with excellent transport links in a quiet location. The accommodation comprises: Entrance hall, large light and spacious open plan lounge/dining room with bay window and French doors giving access to rear courtyard, separate dining kitchen with ample cupboards with work tops over. To the first floor: Master bedroom with twin windows to the front, two additional bedrooms and a bathroom fitted with a white suite. Gas central heating and double glazing are both installed. There is a south facing courtyard garden to the rear of the property. Viewing is recommended. No chain.

## Directions

M14 4DL





- A three bed garden fronted mid terrace property
- Light and spacious accommodation
- Through lounge/dining room & dining kitchen
- Walking distance to MRI
- Courtyard garden to rear
- Excellent location close to amenities
- No Chain

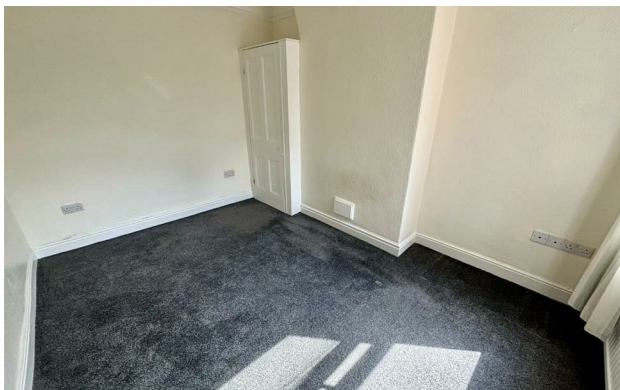
**Postcode** - M14 4DL

**EPC Rating** - D

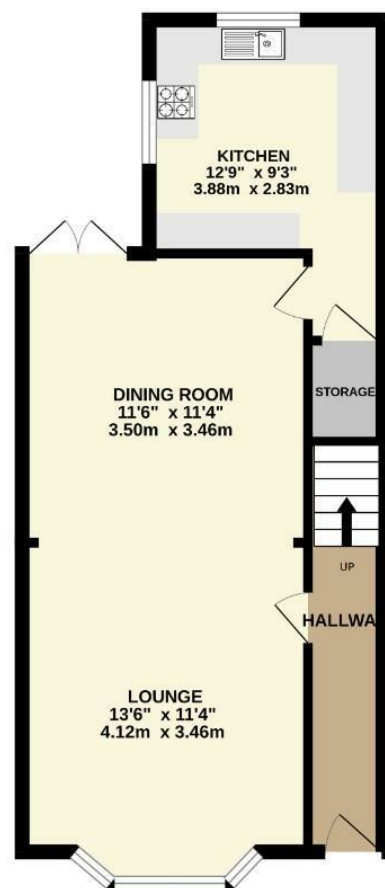
**Floor Area** - 888.00 sq ft

**Local Authority** - Manchester City Council

**Council Tax** - A



GROUND FLOOR



1ST FLOOR



Measurements are approximate. Not to scale. Illustrative purposes only.  
 Made with Metropix ©2024



These particulars are believed to be accurate but they are not guaranteed and do not form a contract. Neither Jordan Fishwick nor the vendor or lessor accept any responsibility in respect of these particulars, which are not intended to be statements or representations of fact and any intending purchaser or lessee must satisfy himself by inspection or otherwise as to the correctness of each of the statements contained in these particulars. Any floorplans on this brochure are for illustrative purposes only and are not necessarily to scale.

Offices also at: Wilmslow, Macclesfield, Hale, Sale, Chorlton, Glossop, Manchester & Salford

757-759 Wilmslow Road, Didsbury Village, Manchester

0161 445 4480

didsbury@jordanfishwick.co.uk  
 www.jordanfishwick.co.uk