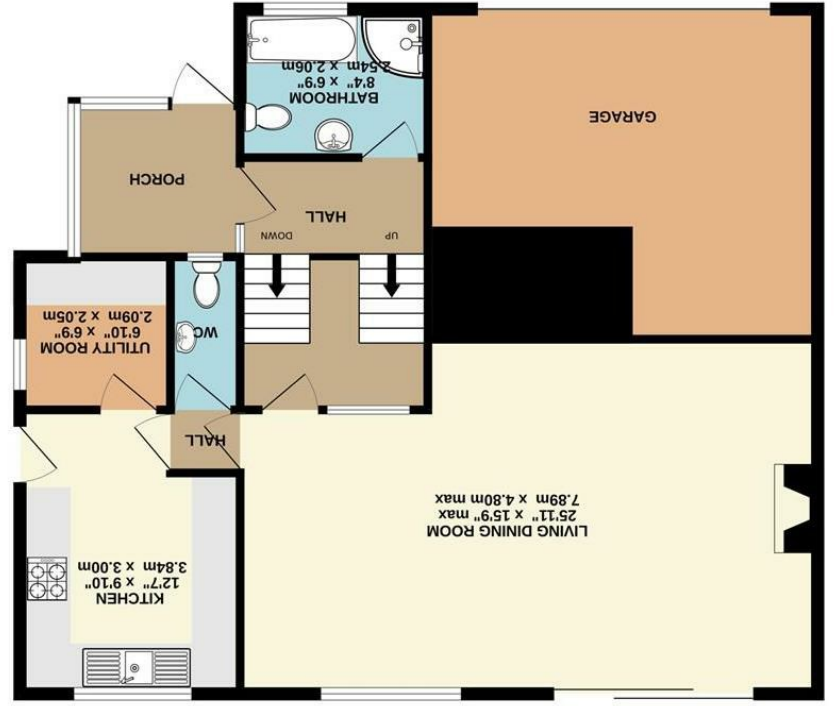


These particulars are believed to be accurate but they are not guaranteed and do not form a contract. Neither Jordan Fishwick nor the vendor or lessor accept any responsibility in respect of these particulars, which are not intended to be statements or representations of fact and any intending purchaser or lessee must satisfy himself by inspection or otherwise as to the correctness of each of the statements contained in these particulars. Any floorplans on this brochure are for illustrative purposes only and are not necessarily to scale.

Whilst every attempt has been made to ensure the accuracy of the floorplan contained here, measurements of doors, windows, rooms and any other items are approximate and no responsibility is taken for any error, omission or mis-statement. This plan is for illustrative purposes only and should be used as such by any prospective purchaser. The services, systems and appliances shown have not been tested and no guarantee as to their operability or efficiency can be given.
Made with Metropix ©2024



1ST FLOOR



GROUND FLOOR





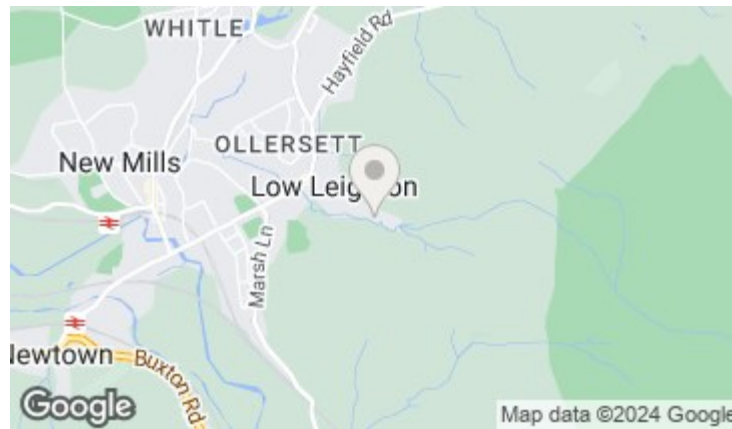
118 Laneside Road, New Mills,
High Peak, SK22 4LU

Offers In The Region Of



The Property

Situated in a sought-after location, backing onto farmland with beautiful views in New Mills, this versatile family home offers one truly unique feature - a tranquil stream flowing through the garden! Creating a peaceful and serene atmosphere, listening to the soothing sounds of nature, this delightful property is sure to impress. Boasting a fabulous open plan living dining room, perfect for entertaining guests or simply relaxing with your family whilst overlooking the wonderful garden. With four bedrooms and two bathrooms, there is ample space for everyone to enjoy. Despite its unassuming appearance from the road, this property is truly deceptive in its size and potential. It offers a wonderful opportunity to create your forever home. ****Part exchange considered for a smaller property in the New Mills area**** for Viewing recommended.



- Superb Position Overlooking Fields
- Brook running through The Garden
- Spacious Family Home
- Fantastic Potential
- Four Bedrooms
- Energy Rating: C Council Tax Band: E
- Integral Garage
- Large Private Garden
- 25FT Living Room

Postcode - SK22 4LU
 EPC Rating - C
 Local Authority - High Peak
 Council Tax - E

