

f

LET BY

f

*Jordan fishwick
lettings*

DIDSBURY

0161-434 5290

www.jordanfishwick.co.uk

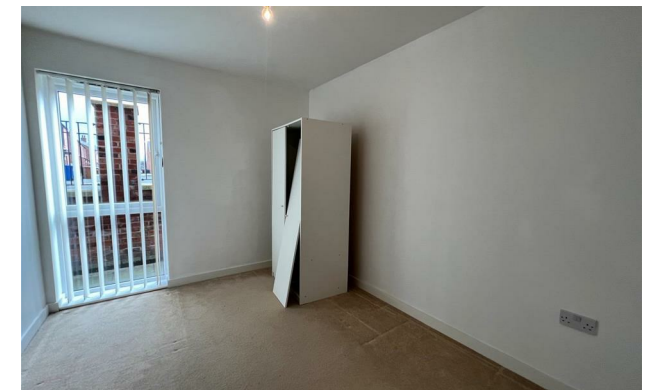
Jordan fishwick

10 The School House London Square,
£850 Per Calendar Month



London Square Cheshire SK1 3GB

£850 Per Calendar Month



The Property


*** VIEWINGS SLOTS NOW FULLY BOOKED *** AVAILABLE JUNE *** Jordan Fishwick are delighted to bring to the rental market this well presented, and modern mid floor one double bedroom apartment in the heart of Stockport. Close to train station, local amenities, Stockport Town Centre and motorway links It is Ideally suited for a single occupant or couple max. In brief the property comprises; entrance hall, open plan lounge/dining/kitchen area with built in appliances, one double bedroom and a three piece suite family bathroom. The property benefits from off road parking, gas central heating, secure door entry system. Offered on an unfurnished basis.

PLEASE NOTE - photos are of a similar property in the block. This is a one bed, unfurnished, mid floor apartment. Call Didsbury now to view - 0161 434 5290

EPC Rating - B

- Available June
- One Double Bedroom
- Modern Apartment
- Unfurnished
- Ideal for Single Occupant or Couple
- Great Location to Stockport Centre
- Parking Available
- EPC Rating B
- Council Tax Band A



Energy Efficiency Rating		
	Current	Potential
Very energy efficient - lower running costs		
(92 plus) A		
(81-91) B	85	85
(69-80) C		
(55-68) D		
(39-54) E		
(21-38) F		
(1-20) G		
Not energy efficient - higher running costs		
England & Wales	EU Directive 2002/91/EC 	





These particulars are believed to be accurate but they are not guaranteed and do not form a contract. Neither Jordan Fishwick nor the vendor or lessor accept any responsibility in respect of these particulars, which are not intended to be statements or representations of fact and any intending purchaser or lessee must satisfy himself by inspection or otherwise as to the correctness of each of the statements contained in these particulars. Any floorplans on this brochure are for illustrative purposes only and are not necessarily to scale.

Offices at: Offices at Chorlton, Didsbury, Disley, Hale, Glossop, Macclesfield, Manchester Deansgate, Manchester Whitworth Street, New Mills, Sale, Wilmslow and Withington