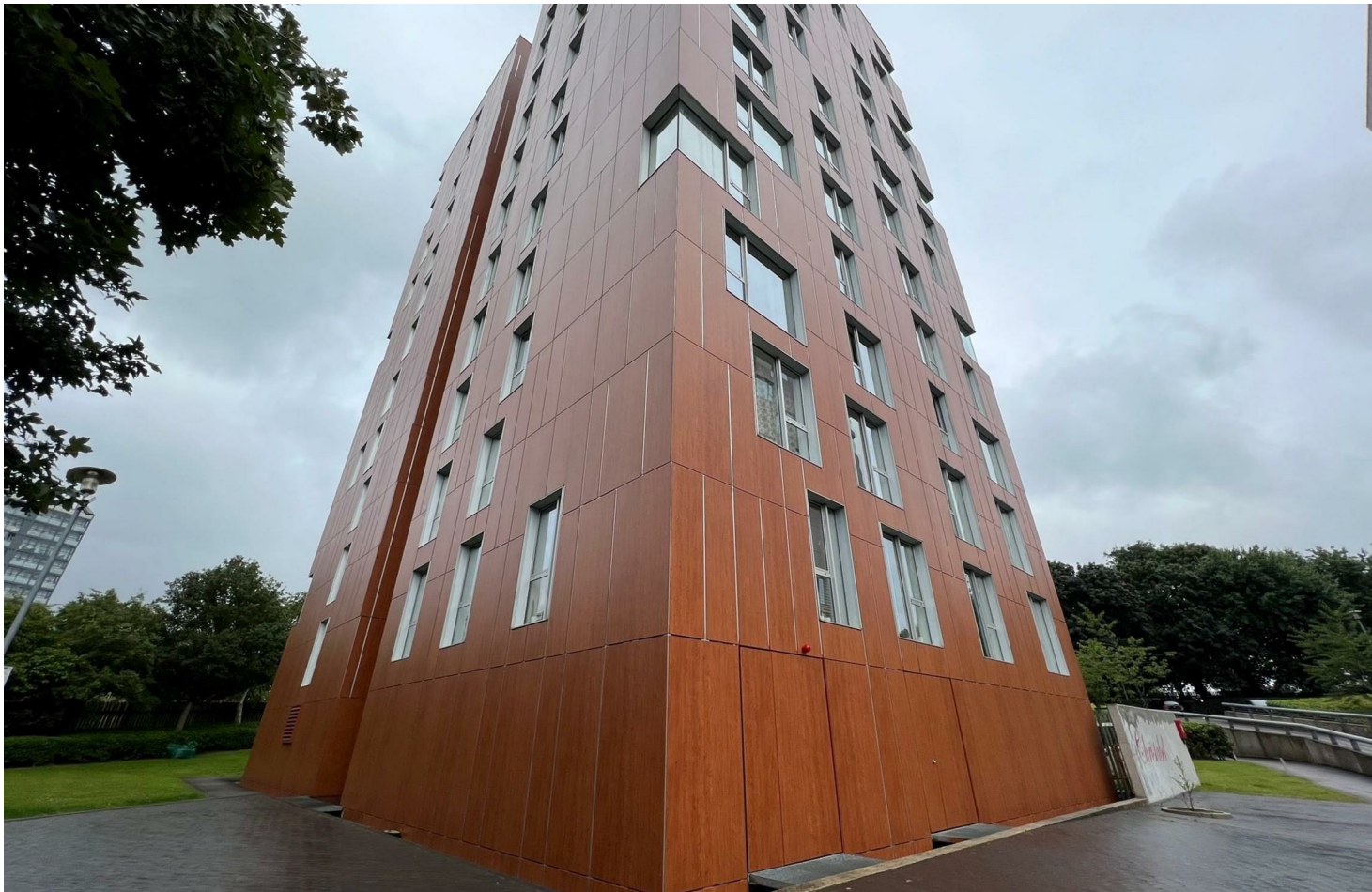




*Jordan fishwick*

Apt 705 Christabel, 106 Dalton Street, M40  
£975 Per Calendar Month



## Christabel Collyhurst M40 7EH

£975 Per Calendar Month

### The Property


Available Start of July. The 2nd building of Three Towers, Christabel which is located just off Rochdale Rd, a short distance from the City Centre. This 7th floor one bedroom apartment comprises of an Entrance hall with built in wardrobes and storage, large corner living room with floor to ceiling windows, fitted kitchen with oven, hob and fridge. Good sized double bedroom, attractive bathroom suite with shower. Gated Parking. Furnished. Tax Band A. EPC Rating C. PROFESSIONALS ONLY.

**\*VIDEO/ PHOTO OFFERS NOT ACCEPTED - PLEASE BOOK AN IN PERSON VIEWING\***



- Available Start of July
- 7th Floor One Bed
- Furnished
- Corner Aspect
- Parking included
- Tax Band A
- EPC Rating C
- Close to City Centre



Energy Efficiency Rating		
	Current	Potential
Very energy efficient - lower running costs		
(92 plus) <b>A</b>		
(81-91) <b>B</b>		<b>86</b>
(69-80) <b>C</b>	<b>76</b>	
(55-68) <b>D</b>		
(39-54) <b>E</b>		
(21-38) <b>F</b>		
(1-20) <b>G</b>		
Not energy efficient - higher running costs		
<b>England &amp; Wales</b>	EU Directive 2002/91/EC 	





These particulars are believed to be accurate but they are not guaranteed and do not form a contract. Neither Jordan Fishwick nor the vendor or lessor accept any responsibility in respect of these particulars, which are not intended to be statements or representations of fact and any intending purchaser or lessee must satisfy himself by inspection or otherwise as to the correctness of each of the statements contained in these particulars. Any floorplans on this brochure are for illustrative purposes only and are not necessarily to scale.

Offices at: Offices at Chorlton, Didsbury, Disley, Hale, Glossop, Macclesfield, Manchester Deansgate, Manchester Whitworth Street, New Mills, Sale, Wilmslow and Withington