



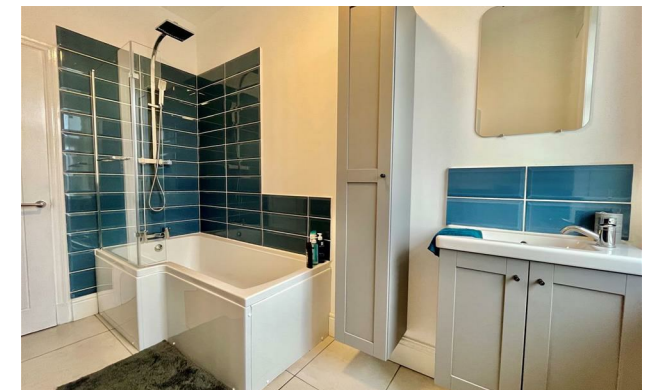
jordan fishwick

Highfield Terrace New Mills High Peak



Highfield Terrace New Mills High Peak SK22 4LP

£225,000



The Property

A charming terraced house that has undergone a comprehensive refurbishment including full re-roofing works, presenting a delightful opportunity for a new homeowner.

Upon entering, you are greeted by an entrance hall leading to a cosy living room featuring a wood-burning stove, perfect for those chilly evenings.

The new dining kitchen and bathroom are sure to impress, adding a modern touch to this traditional home. The property has been beautifully decorated to a high standard, ensuring a comfortable and stylish living space for its new occupants.

The property boasts two good-sized bedrooms, with the master bedroom offering the convenience of fitted wardrobes. There is a walled frontage and a private enclosed rear garden.

Located in the picturesque area of High Peak, this property offers not just a beautiful home, but also a wonderful community to be a part of. Don't miss out on the chance to make this lovely house your own - book a viewing today and envision the life you could create in this inviting abode.



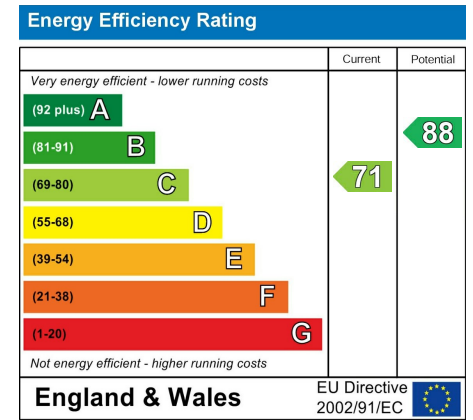
- Modernised Throughout to a High Standard and Beautifully Presented
- New Dining Kitchen with Island Unit
- Living Room with Wood Burning Stove
- Newly Fitted Modern Bathroom Suite
- Walled Frontage and Private Rear Garden
- Energy Rating C Council Tax Band B
- Convenient Popular Location
- Comprehensive Refurbishment Including a Re Roof

Postcode SK22 4LP

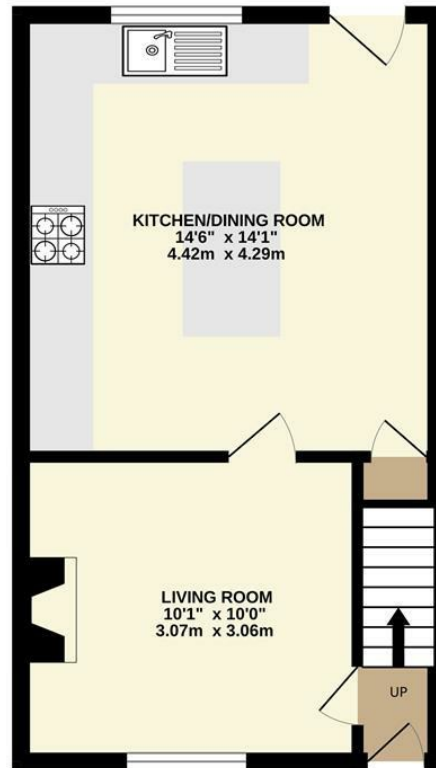
EPC Rating C

Local Authority High Peak

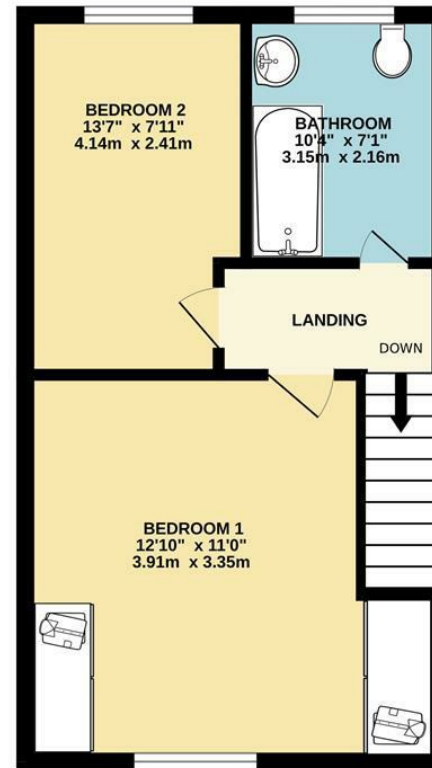
Council Tax B



GROUND FLOOR
330 sq.ft. (30.7 sq.m.) approx.



1ST FLOOR
336 sq.ft. (31.2 sq.m.) approx.



TOTAL FLOOR AREA : 666 sq.ft. (61.9 sq.m.) approx.

Whilst every attempt has been made to ensure the accuracy of the floorplan contained here, measurements of doors, windows, rooms and any other items are approximate and no responsibility is taken for any error, omission or mis-statement. This plan is for illustrative purposes only and should be used as such by any prospective purchaser. The services, systems and appliances shown have not been tested and no guarantee as to their operability or efficiency can be given.
Made with Metropix ©2024



These particulars are believed to be accurate but they are not guaranteed and do not form a contract. Neither Jordan Fishwick nor the vendor or lessor accept any responsibility in respect of these particulars, which are not intended to be statements or representations of fact and any intending purchaser or lessee must satisfy himself by inspection or otherwise as to the correctness of each of the statements contained in these particulars. Any floorplans on this brochure are for illustrative purposes only and are not necessarily to scale.

Offices at: Chorlton, Didsbury, Disley, Hale, Glossop, Macclesfield, Manchester Deansgate, Manchester Whitworth Street, New Mills, Sale, Wilmslow and Withington

2 Union Road, New Mills, High Peak, Derbyshire, SK22 3ES

01663 767878

newmills@jordanfishwick.co.uk

www.jordanfishwick.co.uk