



P
Mon - Fri
8 am - 6 pm
resident
permit holders
or
3 hours
No return
within 1 hour
→

P

Disabled
badge
holders
only
←

0
2

**NO BALL
GAMES**



14 Drybrook Close, Longsight, Manchester, M13 9AW

Jordan Fishwick are pleased to offer for sale this THREE BEDROOM end terrace house, located in the popular Grove Village development, just a 7 minute drive from Central Manchester. The house is located on the end of the row of terraces and offers on street parking to the front, and a garage to the rear. The kitchen has been modernised but the rest of the house needs some refurbishment. The house briefly comprises: entrance hall, kitchen, living room, downstairs W/C and plenty of storage. Upstairs, three bedrooms and a wet room. NO ONWARD CHAIN. FREEHOLD.

Price £230,000

Viewing arrangements

Viewing strictly by appointment through the agent
245 Deansgate, Manchester, M3 4EN 0161 833 9499 opt 3

Entrance Hall

Storage cupboards. Access to all rooms.

Kitchen

12'3" x 8'5"

Range of wall and base units with worktops over. Sink with mixer tap. Freestanding cooker with hobs. Space for fridge/freezer. Radiator. Open to living room.

Living Room

17'8" x 14'9"

Laminate flooring. Radiator. TV point.

W/C

Low level W/C. Sink with 2 tap holes. Carpet. Ceiling light.

Bedroom 1

11'6" x 10'1"

Ceiling light. Radiator.

Bedroom 2

14'11" x 8'8"

Ceiling light. Radiator.

Bedroom 3

11'6" x 7'3"

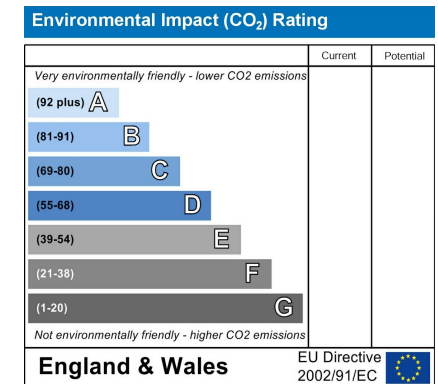
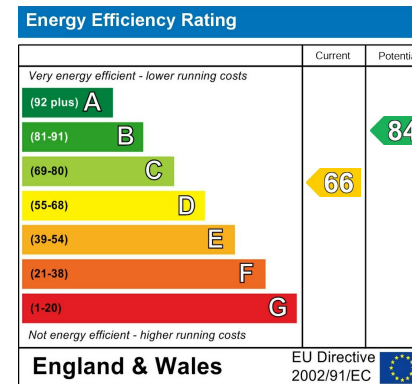
Ceiling light. Radiator.

Wet Room

Low level W/C. Sink with two tap holes. Electric shower. Heated towel rail.

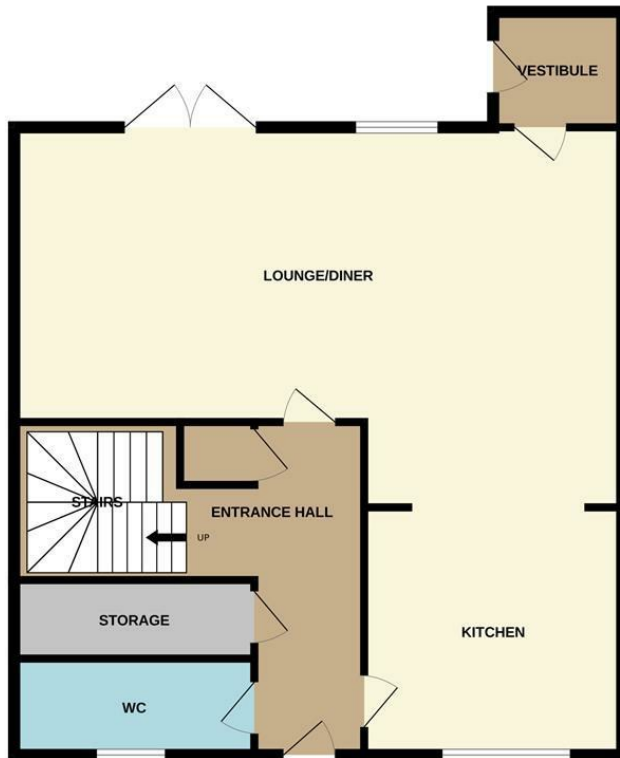
Externally

Parking bay to front. Garage to rear. Paved garden. District heating system ran by Grove Village management company.

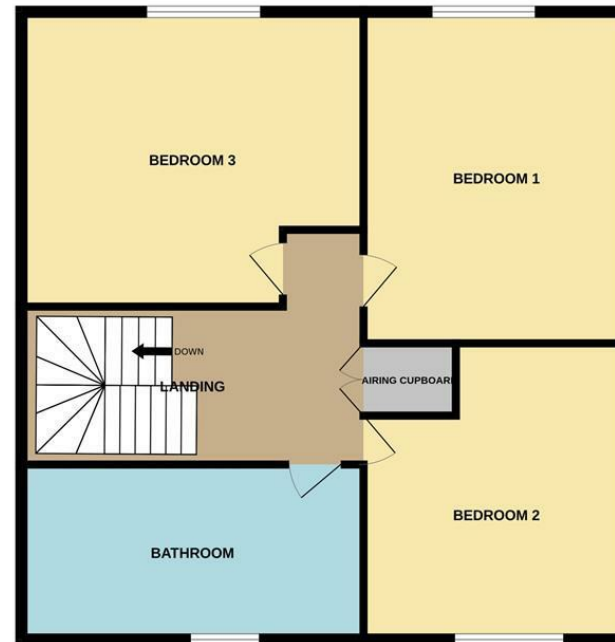




GROUND FLOOR



1ST FLOOR



Measurements are approximate. Not to scale. Illustrative purposes only
Made with Metropix ©2024



These particulars are believed to be accurate but they are not guaranteed and do not form a contract. Neither Jordan Fishwick nor the vendor or lessor accept any responsibility in respect of these particulars, which are not intended to be statements or representations of fact and any intending purchaser or lessee must satisfy himself by inspection or otherwise as to the correctness of each of the statements contained in these particulars. Any floorplans on this brochure are for illustrative purposes only and are not necessarily to scale.

Offices at: Chorlton, Didsbury, Disley, Hale, Glossop, Macclesfield, Manchester Deansgate, Manchester Whitworth Street, New Mills, Sale, Wilmslow and Withington

245 Deansgate, Manchester, M3 4EN

0161 833 9499 opt 3

manchester@jordanfishwick.co.uk

www.jordanfishwick.co.uk

