



CAPITAL & CENTRAL

20

Ashley

3069



Apt 214 Crusader Mill, Piccadilly East, Chapelton Street, Manchester, M1 2EW

Welcome to this charming apartment located in the heart of Manchester at Crusader Mill on Chapelton Street. This delightful property boasts a reception room, a cosy bedroom, and a modern shower room, making it the perfect home for a young professional or a couple looking to reside in a vibrant urban setting.

Situated on the second floor of a historic mill conversion, this apartment features dual aspect windows that flood the space with natural light, creating a bright and airy atmosphere. The unique character of the mill conversion adds a touch of history and charm to the property, making it a truly special place to call home.

One of the standout features of this property is the sense of community it offers. With communal facilities such as a concierge service to assist with your needs, a BBQ area for social gatherings with Bluetooth speakers in the courtyard for outdoor entertainment, you'll have plenty of opportunities to connect with your neighbours and enjoy a sense of belonging.

Price £250,000

Viewing arrangements

Viewing strictly by appointment through the agent
245 Deansgate, Manchester, M3 4EN 0161 833 9499 opt 3

Kitchen

9'11" x 6'7"

Range of wall and base units with quartz white worktop over. Integrated CDA fridge/freezer, Bosch dishwasher, Bosch cooker with induction hob and extractor over. Blanco stainless steel sink with chrome mixer tap. Under cupboard lighting. TV/Telephone point. Wall mounted electric heater. Engineered oak wooden flooring. Wooden beams. Exposed brickwork.

Living Room

17'10" x 9'9"

TV/Telephone point. Wall mounted electric heater. Engineered oak wooden flooring. Wooden beams. Exposed brickwork.

Bedroom

16'11" x 10'1"

TV point. Wall mounted electric heater. Engineered oak wooden flooring. Wall lights.

Shower Room

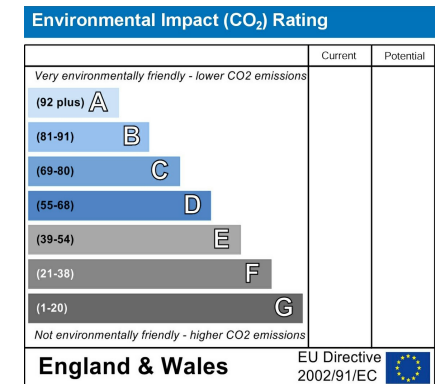
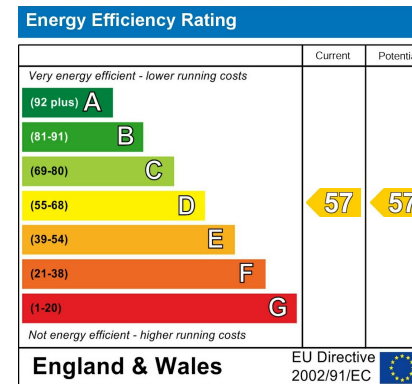
Accessed via the hallway, a three piece bathroom comprising large shower, WC, sink with mixer tap, partially tiled wall and tiled flooring, heated towel rail, extractor and wall lighting.

Externally

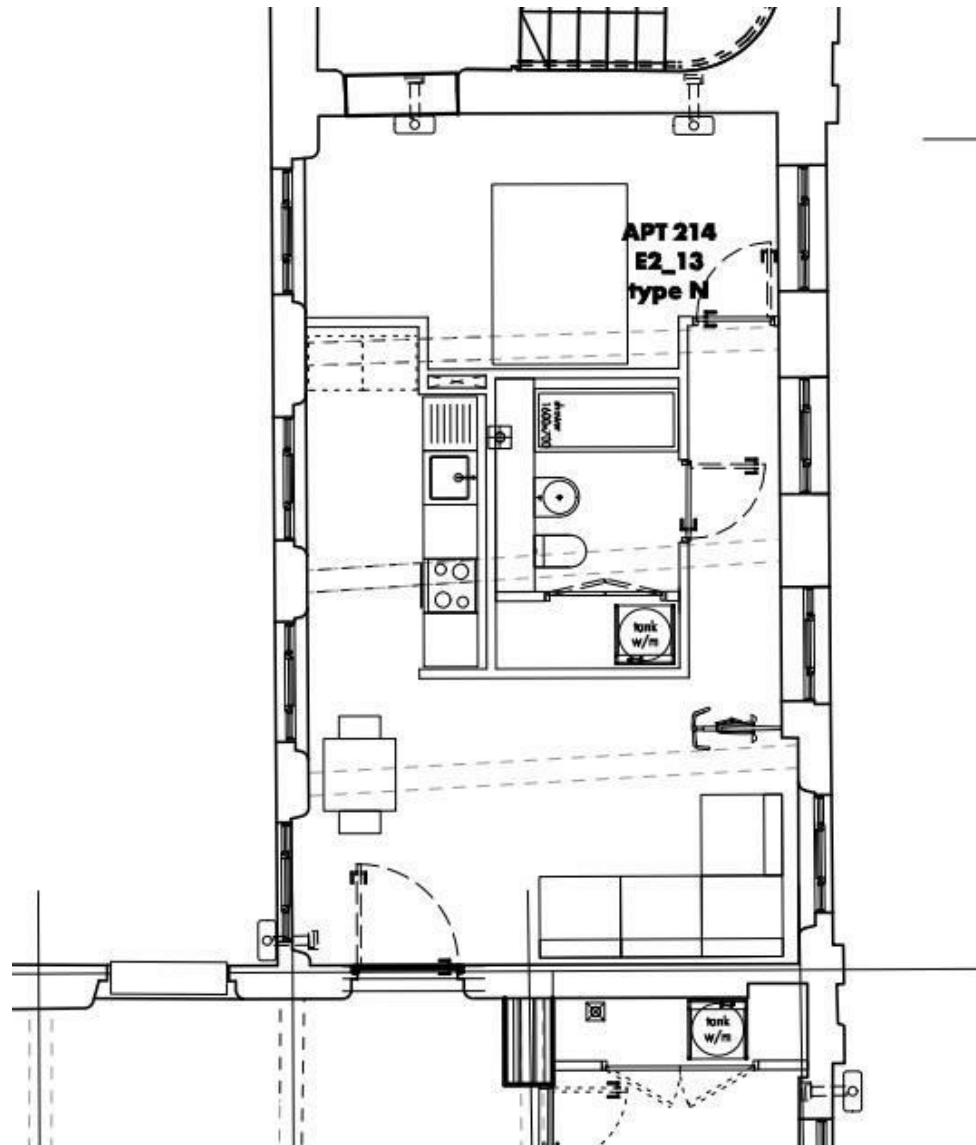
Concierge. BBQ area with bluetooth speakers. Lifts to all floors. Bike storage.

Additional Information

Service Charge: TBC
 Ground Rent: N/A
 Lease: 250 years from 2015
 Council Tax Band: C
 Management Company: Zenith







These particulars are believed to be accurate but they are not guaranteed and do not form a contract. Neither Jordan Fishwick nor the vendor or lessor accept any responsibility in respect of these particulars, which are not intended to be statements or representations of fact and any intending purchaser or lessee must satisfy himself by inspection or otherwise as to the correctness of each of the statements contained in these particulars. Any floorplans on this brochure are for illustrative purposes only and are not necessarily to scale.

Offices at: Chorlton, Didsbury, Disley, Hale, Glossop, Macclesfield, Manchester Deansgate, Manchester Whitworth Street, New Mills, Sale, Wilmslow and Withington

245 Deansgate, Manchester, M3 4EN

0161 833 9499 opt 3

manchester@jordanfishwick.co.uk

www.jordanfishwick.co.uk

