



Apt 7 Millennium House, 366 Chester Road, Manchester, M16 9FH

Jordan Fishwick are pleased to offer for sale one bedroom apartment located on Chester Road, within walking distance from Deansgate in Old Trafford and close to Castlefield. The apartment is located on the 2nd floor and briefly comprises of Entrance hall, spacious living room with electric wall heaters and open through to the kitchen with oven/hob, fridge/freezer and washing machine. Bedroom is a good sized double and there is an attractive three piece white suite. Parking space to the rear included. Council Tax Band A. EWS1 IN PLACE. No onward chain.

Offers In Excess Of £150,000

Viewing arrangements

Viewing strictly by appointment through the agent

245 Deansgate, Manchester, M3 4EN 0161 833 9499 opt 3

Entrance Hall

Ceiling light. Vinyl flooring. Storage cupboard.

Living Room/Kitchen

20'9" x 10'11"

Range of wall and base units with worktops over.

Freestanding fridge and freezer, and washing machine.

Cooker with hob and extractor over. Sink with mixer tap.

Spotlights. Wall mounted heater. TV and telephone point.

Intercom system.

Bedroom

11'10" x 9'3"

Carpet. Ceiling light. Wall mounted heater. TV point.

Bathroom

Bath with electric shower over. Sink with mixer tap. Low level W/C. Tiled flooring and partially tiled walls.

Externally

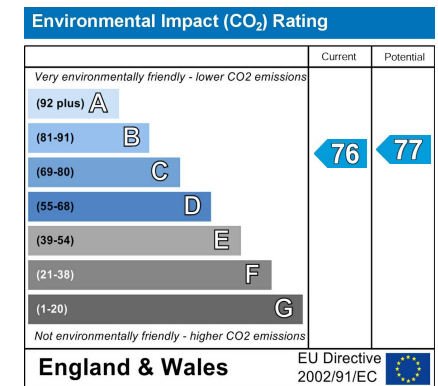
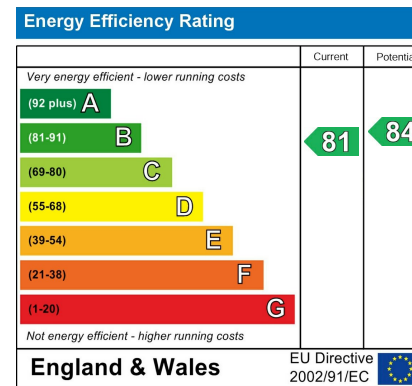
Allocated parking to the rear. Lifts to all floors.

Additional Information

Lease - 199 years from 2004

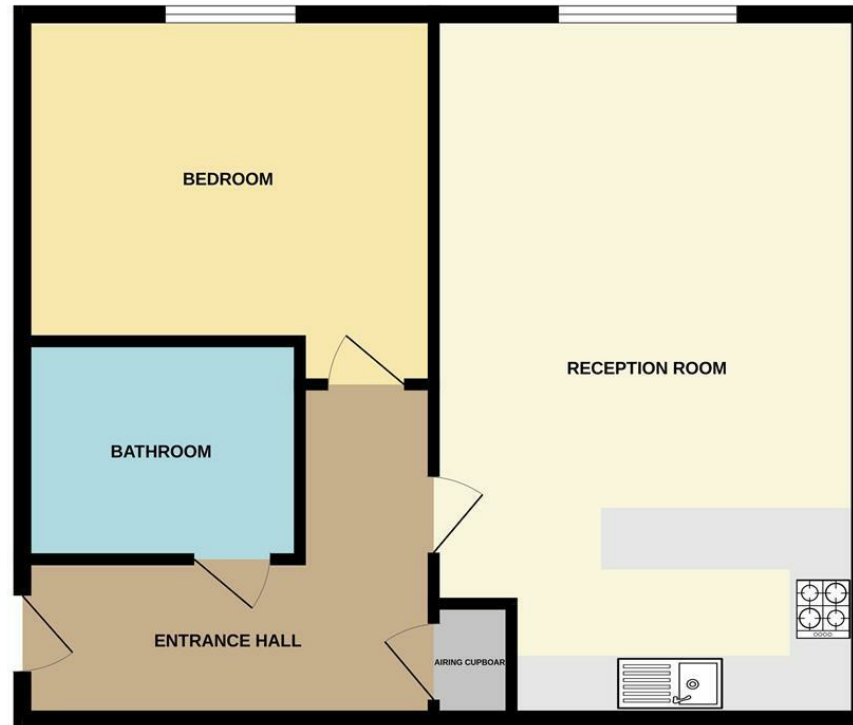
Service charges - £1986 per annum (including buildings insurance)

Ground rent - £200 per annum





2ND FLOOR



Measurements are approximate. Not to scale. Illustrative purposes only.
Made with Metropix ©2024



These particulars are believed to be accurate but they are not guaranteed and do not form a contract. Neither Jordan Fishwick nor the vendor or lessor accept any responsibility in respect of these particulars, which are not intended to be statements or representations of fact and any intending purchaser or lessee must satisfy himself by inspection or otherwise as to the correctness of each of the statements contained in these particulars. Any floorplans on this brochure are for illustrative purposes only and are not necessarily to scale.

Offices at: Chorlton, Didsbury, Disley, Hale, Glossop, Macclesfield, Manchester Deansgate, Manchester Whitworth Street, New Mills, Sale, Wilmslow and Withington

245 Deansgate, Manchester, M3 4EN

0161 833 9499 opt 3

manchester@jordanfishwick.co.uk

www.jordanfishwick.co.uk

