



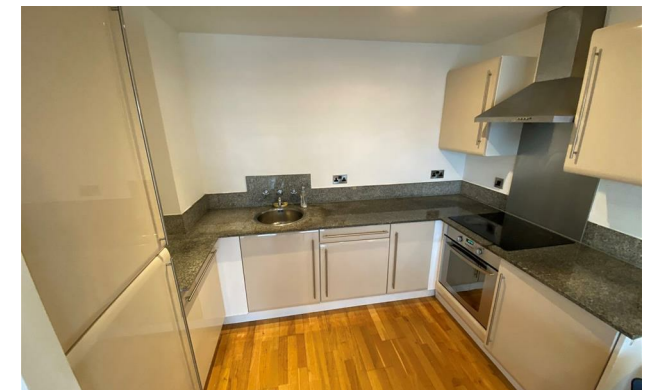
Jordan fishwick

Apt 96 Albion Works, Block D, M4 7AT
£1,295 Per Month



Albion Works 12 Pollard Street M4 7AT

£1,295 Per Month



The Property


PLEASE NOTE - PROPERTY IS AVAILABLE FOR 6 MONTHS ONLY

Available Now. This fifth floor two bedroom apartment is located just a short distance from Piccadilly Train Station and Northern Quarter. Entrance hall with cupboard housing washer/dryer, open plan living room with laminate flooring and patio door leading to the full length balcony. The fully fitted kitchen has fridge/freezer, dishwasher, oven and hob. Main bedroom has wet shower room and the other bedroom is also a good sized double. Three piece suite with tiled walls and floor. Parking included. Furnished. Council Tax Band C. EPC Rating C. No Pets.

VIDEO/ PHOTO OFFERS NOT ACCEPTED - PLEASE CALL TO BOOK A VIEWING

- Available Now
- 6 Months Only
- Two Bed Apartment
- Ancoats Location
- Close to Tram Stop
- Close to City Centre
- Tax Band C
- EPC Rating C
- Parking Included



| Energy Efficiency Rating | | |
|---|---|-----------|
| | Current | Potential |
| Very energy efficient - lower running costs | | |
| (92 plus) A | | |
| (81-91) B | | 85 |
| (69-80) C | 77 | |
| (55-68) D | | |
| (39-54) E | | |
| (21-38) F | | |
| (1-20) G | | |
| Not energy efficient - higher running costs | | |
| England & Wales | EU Directive 2002/91/EC  | |





These particulars are believed to be accurate but they are not guaranteed and do not form a contract. Neither Jordan Fishwick nor the vendor or lessor accept any responsibility in respect of these particulars, which are not intended to be statements or representations of fact and any intending purchaser or lessee must satisfy himself by inspection or otherwise as to the correctness of each of the statements contained in these particulars. Any floorplans on this brochure are for illustrative purposes only and are not necessarily to scale.

Offices at: Offices at Chorlton, Didsbury, Disley, Hale, Glossop, Macclesfield, Manchester Deansgate, Manchester Whitworth Street, New Mills, Sale, Wilmslow and Withington