



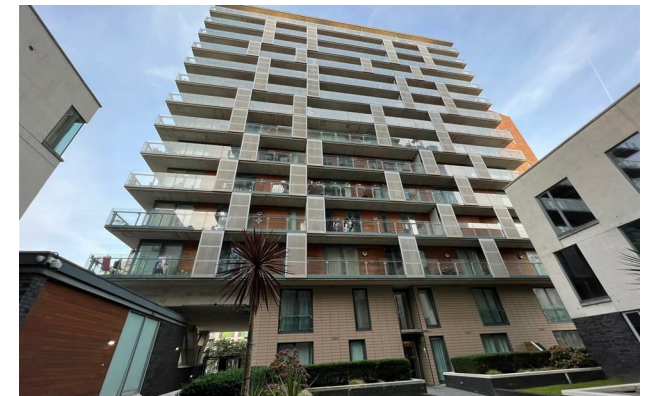
jordan fishwick

Apt 410 Spectrum, Block 7, M3 7BY
£1,100 Per Calendar Month



Spectrum Blackfriars Road M3 7BY

£1,100 Per Calendar Month



The Property


Available Start of March. This 10th floor one bedroom corner apartment has excellent views towards the city. Entrance hall with storage, spacious living/Kitchen with dishwasher, fridge and freezer, oven and hob. The bedroom has triple fitted wardrobes. Luxury shower room with mirrored walls and concealed cabinets. Large corner balcony. Parking INCLUDED. Furnished. Tax Band B. EPC Rating C.

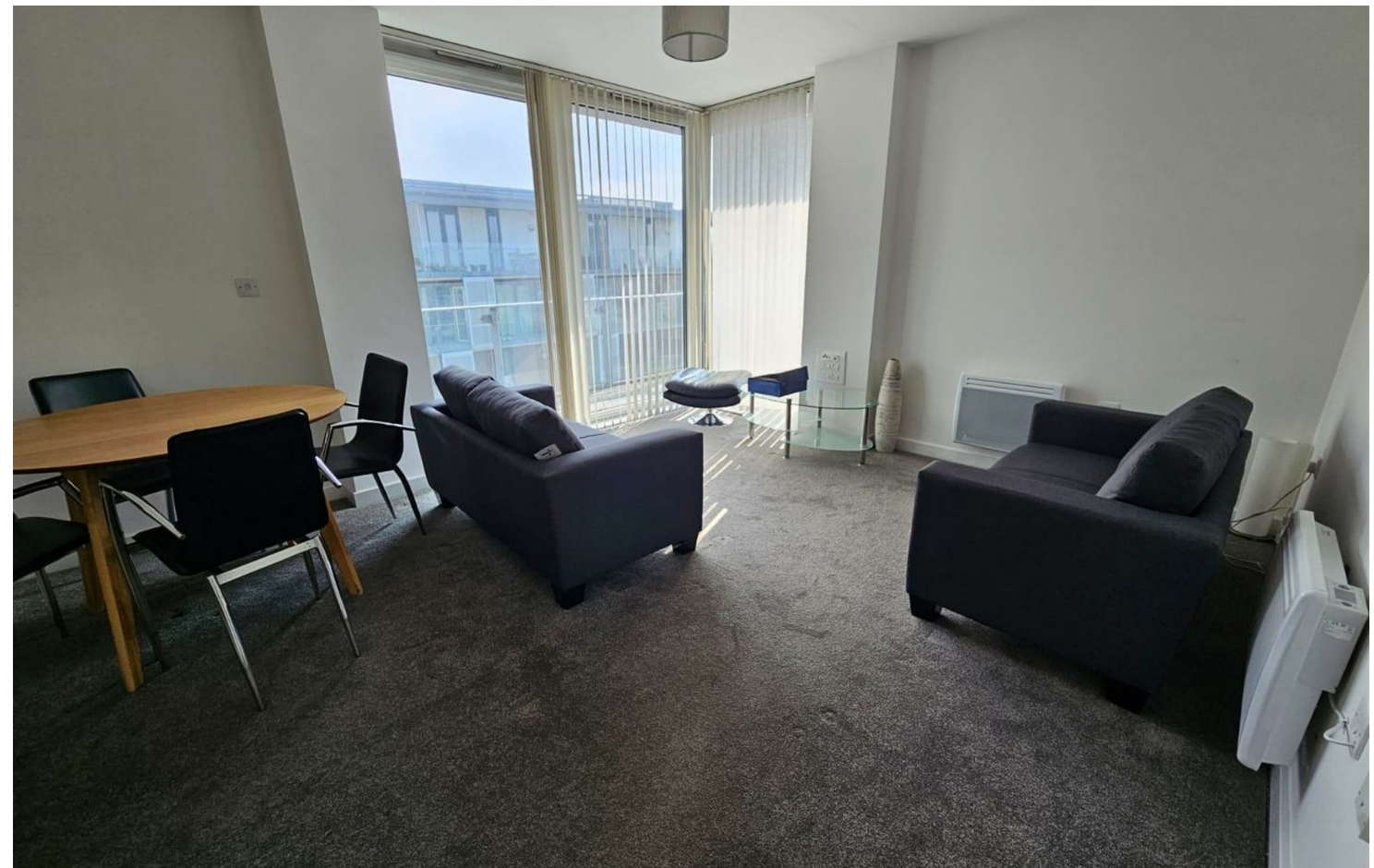
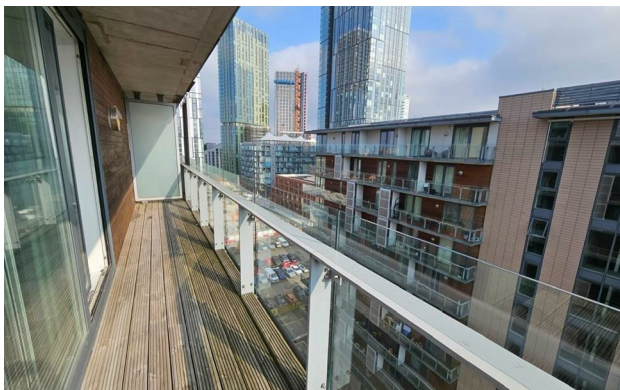
VIDEO OFFERS NOT ACCEPTED - PLEASE BOOK AN INPERSON VIEWING



- LET AGREED
- 10th Floor One Bed
- Corner Balcony
- Furnished
- EPC Rating C
- Council Tax Band B
- Parking Included
- Close to City Centre



Energy Efficiency Rating		
	Current	Potential
Very energy efficient - lower running costs		
(92 plus) A		
(81-91) B	80	85
(69-80) C		
(55-68) D		
(39-54) E		
(21-38) F		
(1-20) G		
Not energy efficient - higher running costs		
England & Wales	EU Directive 2002/91/EC 	





These particulars are believed to be accurate but they are not guaranteed and do not form a contract. Neither Jordan Fishwick nor the vendor or lessor accept any responsibility in respect of these particulars, which are not intended to be statements or representations of fact and any intending purchaser or lessee must satisfy himself by inspection or otherwise as to the correctness of each of the statements contained in these particulars. Any floorplans on this brochure are for illustrative purposes only and are not necessarily to scale.

Offices at: Offices at Chorlton, Didsbury, Disley, Hale, Glossop, Macclesfield, Manchester Deansgate, Manchester Whitworth Street, New Mills, Sale, Wilmslow and Withington