



Jordan fishwick

DIDSBURY VILLAGE
The Limes



The Limes, Didsbury Village, M20 2RB

£325,000



The Property

Still in its infancy, this beautifully presented, two double bedroom apartment forms part of a select development known as The Limes, superbly positioned in the heart of DIDSBURY VILLAGE. Presented to the highest of standards with numerous noteworthy features including two double bedrooms with ample space for freestanding furniture, dual aspect open plan living/kitchen area, luxury bathroom & en-suite, generous L-shaped entrance hall, engineered wood flooring, Video entry system & secure gated parking. Didsbury is one of Manchester's most desirable suburbs and The Limes combines the opportunity to live within a short stroll of the vibrant and eclectic shops, restaurants and bars in the Village, whilst offering outstanding commuter links to the city, airport and countryside beyond.

Directions

M20 2RB



- Select gated development
- Superb Didsbury Village location
- Beautifully presented throughout
- Two double bedrooms
- Luxury bathroom & en-suite
- Open living/kitchen with dual aspect
- Generous L-shaped entrance hall
- Engineered wood flooring
- Allocated parking
- Opposite Didsbury Park

Postcode - M20 2RB

EPC Rating - B

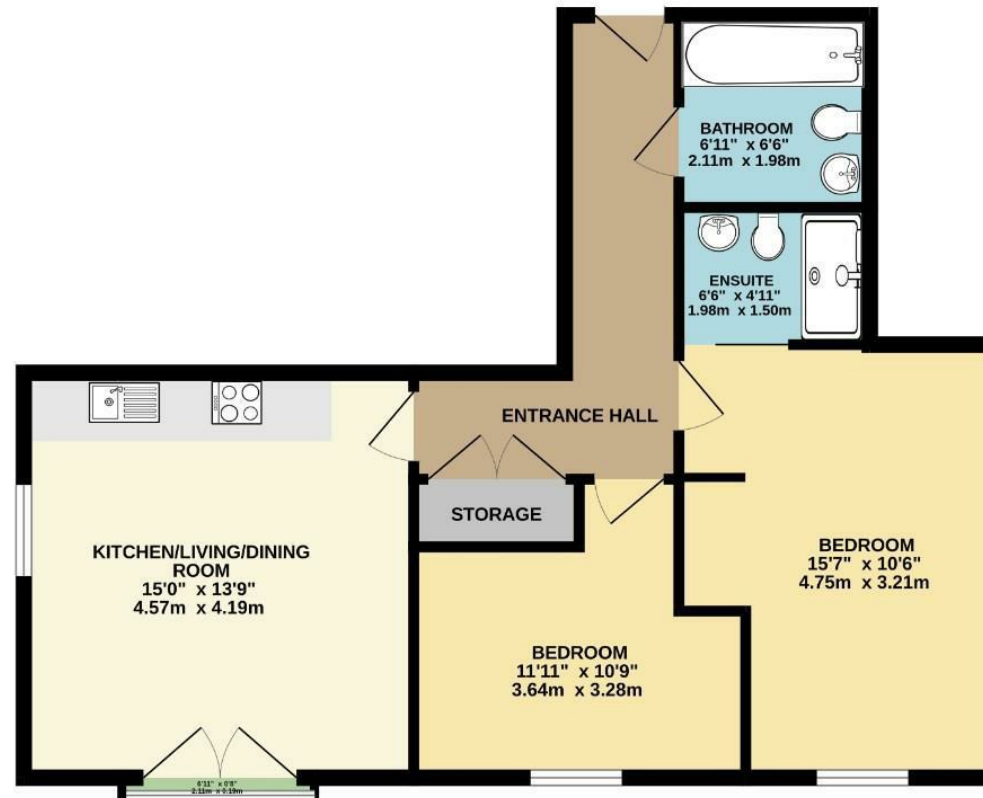
Floor Area - 655.00 sq ft

Local Authority - Manchester City Council

Council Tax - C



RAISED GROUND FLOOR
655 sq.ft. (60.9 sq.m.) approx.



TOTAL FLOOR AREA: 655 sq.ft. (60.9 sq.m.) approx.
Measurements are approximate. Not to scale. Illustrative purposes only.
Made with Metropix ©2024



These particulars are believed to be accurate but they are not guaranteed and do not form a contract. Neither Jordan Fishwick nor the vendor or lessor accept any responsibility in respect of these particulars, which are not intended to be statements or representations of fact and any intending purchaser or lessee must satisfy himself by inspection or otherwise as to the correctness of each of the statements contained in these particulars. Any floorplans on this brochure are for illustrative purposes only and are not necessarily to scale.

Offices also at: Wilmslow, Macclesfield, Hale, Sale, Chorlton, Glossop, Manchester & Salford

757-759 Wilmslow Road, Didsbury Village, Manchester

0161 445 4480

didsbury@jordanfishwick.co.uk
www.jordanfishwick.co.uk