



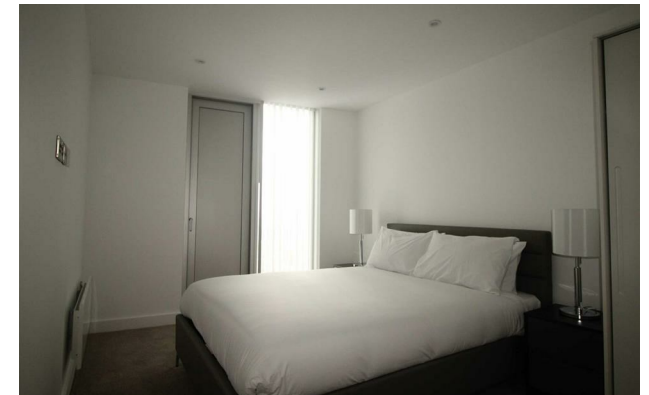
*Jordan fishwick*

South Tower, Deansgate Square 9 Owen  
£1,650 Per Calendar Month



## South Tower Manchester M15 4TQ

£1,650 Per Calendar Month



### The Property

For a Video Tour Please click this link... <https://youtu.be/bI0J6sUQiVo>

Available Mid September. \*\*\*\*\*5\* Hotel Style Development \*\*\*\*\* Jordan Fishwick are proud to present a 29th Floor, 2 bedroom 2 bathroom apartment in Deansgate Square. Located in the South Tower, the tallest of the 4 towers, the building oozes luxury throughout. With on-site concierge, communal areas and leisure facilities including a GYM and POOL, this development caters for all your needs! Situated at the end of Deansgate, close to Castlefield and in the heart of the City Centre. Internally the properties are ultimate luxury-walnut herringbone style floors, high spec kitchens with integrated appliances and wine cooler, double bedrooms and luxury bathrooms with mood lighting and bespoke storage. This apartment has also been furnished to an excellent standard throughout with fantastic furnishings. **ALLOCATED PARKING SPACE INCLUDED!**

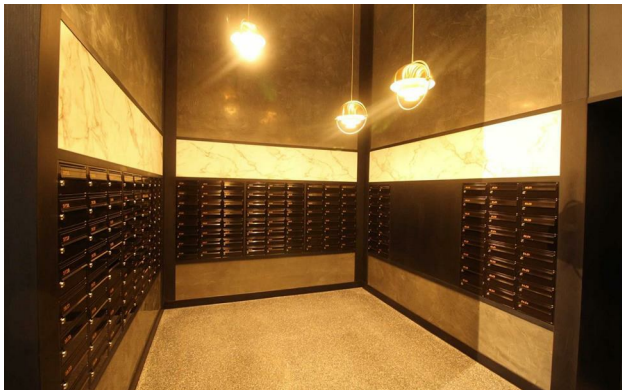
**CALL NOW TO VIEW!!! 0161-833-9499**



- Available Mid September
- 2 Bedrooms
- On-Site Gym / Pool
- Secure Parking Space
- On-Site Concierge
- 5\* Luxury Apartments



Energy Efficiency Rating		
	Current	Potential
Very energy efficient - lower running costs		
(92 plus) <b>A</b>		
(81-91) <b>B</b>	<b>85</b>	<b>85</b>
(69-80) <b>C</b>		
(55-68) <b>D</b>		
(39-54) <b>E</b>		
(21-38) <b>F</b>		
(1-20) <b>G</b>		
Not energy efficient - higher running costs		
<b>England &amp; Wales</b>	EU Directive 2002/91/EC	





These particulars are believed to be accurate but they are not guaranteed and do not form a contract. Neither Jordan Fishwick nor the vendor or lessor accept any responsibility in respect of these particulars, which are not intended to be statements or representations of fact and any intending purchaser or lessee must satisfy himself by inspection or otherwise as to the correctness of each of the statements contained in these particulars. Any floorplans on this brochure are for illustrative purposes only and are not necessarily to scale.

Offices at: Offices at Chorlton, Didsbury, Disley, Hale, Glossop, Macclesfield, Manchester Deansgate, Manchester Whitworth Street, New Mills, Sale, Wilmslow and Withington