



*Jordan fishwick*

42 Ivygreen Road, M21 9ET  
£1,400 Per Calendar Month





## Ivygreen Road Chorlton M21 9ET

£1,400 Per Calendar Month




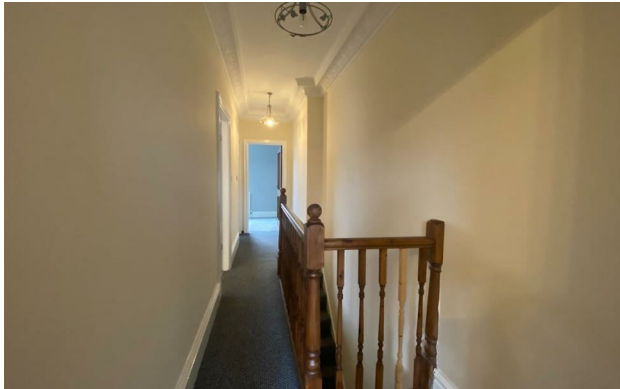
### The Property

\*\*\* AVAILABLE NOVEMBER\*\*\* - NO SHARERS. FAMILIES OR COUPLES ONLY A spacious unfurnished, mid-terraced property providing spacious and light accommodation located on a desirable and popular road in Chorlton Green near beech road. Close to local amenities and the Metro. Comprises briefly: entrance hall, lounge, dining room, re-fitted kitchen and downstairs toilet To the first floor there are three well-proportioned bedrooms and a re-fitted bathroom. Gas central heating and double glazing are installed. Small forecourt style yard to rear. To arrange a viewing of this superb home is highly recommended . No white goods. Unfurnished. Please call 0161 393 7539.

- Available NOW
- Three bedrooms
- Two reception
- Downstairs WC and family bathroom
- popular road in Chorlton Green
- Close to local amenities and the Metro



Energy Efficiency Rating		
	Current	Potential
Very energy efficient - lower running costs		
(92 plus) <b>A</b>		
(81-91) <b>B</b>		
(69-80) <b>C</b>		
(55-68) <b>D</b>		
(39-54) <b>E</b>		
(21-38) <b>F</b>		
(1-20) <b>G</b>		
Not energy efficient - higher running costs		
	51	65
<b>England &amp; Wales</b>	EU Directive 2002/91/EC 	







These particulars are believed to be accurate but they are not guaranteed and do not form a contract. Neither Jordan Fishwick nor the vendor or lessor accept any responsibility in respect of these particulars, which are not intended to be statements or representations of fact and any intending purchaser or lessee must satisfy himself by inspection or otherwise as to the correctness of each of the statements contained in these particulars. Any floorplans on this brochure are for illustrative purposes only and are not necessarily to scale.

Offices at: Offices at Chorlton, Didsbury, Disley, Hale, Glossop, Macclesfield, Manchester Deansgate, Manchester Whitworth Street, New Mills, Sale, Wilmslow and Withington