

LET AND
MANAGED BY

*Jordan fishwick
lettings*

WITHINGTON

0161-438 2411

Jordan fishwick

64-66 Parsonage Road, M20 4WR

£925 Per Calendar Month



Parsonage Road Withington M20 4WR

£925 Per Calendar Month



The Property


**** AVAILABLE NOW **** A stylish double bedroom lower ground floor apartment with its own private front door, forming part of an attractive conversion which is situated just a 'short stroll' from the centre of Withington. Ideally suited for a single occupant or couple only. Presented to a high standard throughout with both gas central heating and uPVC double glazing. The living space in outline comprises:- Private entrance through to the good sized living/dining room, fitted kitchen with integrated appliances, very spacious double bedroom with fitted wardrobes and a large walk in storage room with a contemporary white suite bathroom. Externally, there are communal grounds with secure residents parking. Fully Furnished. 6 month tenancies only. To arrange a viewing please call Withington on 0161 438 2411

EPC Rating - C



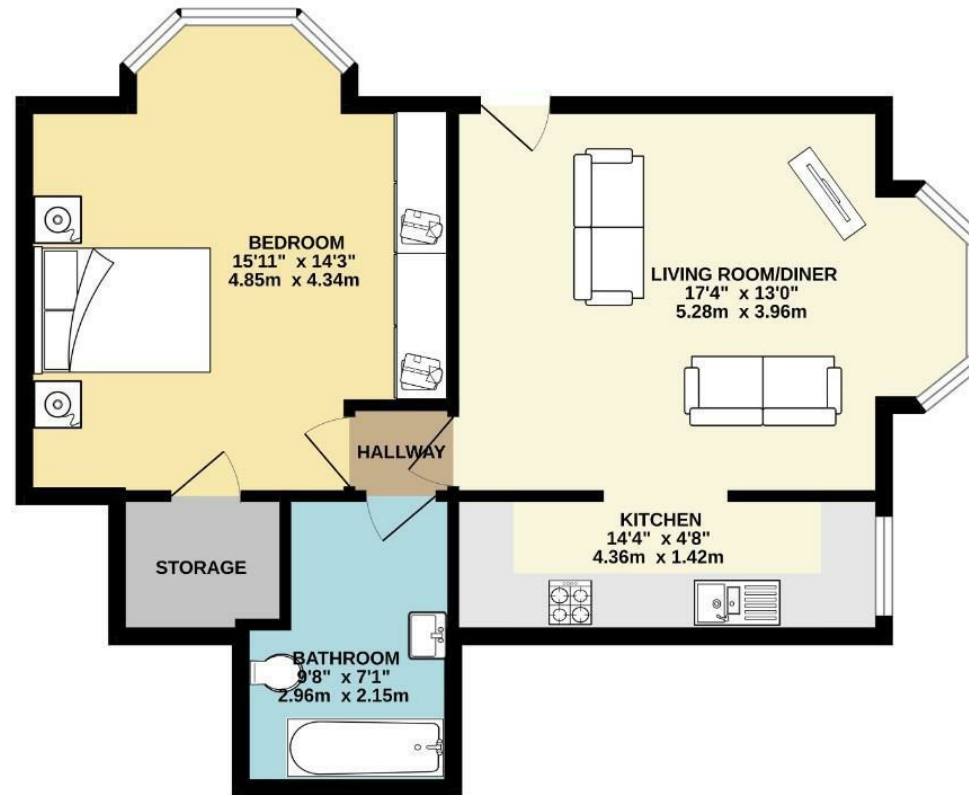
- Available Now
- Large Double Bedroom
- Spacious Living Room
- Ideal for Single Occupant or Couple
- Private Entrance
- Fully Furnished
- Off Road Parking
- 6 Month Tenancy
- Council Tax Band B
- EPC Rating C



| Energy Efficiency Rating | | |
|---|---|-----------|
| | Current | Potential |
| Very energy efficient - lower running costs | | |
| (92 plus) A | | |
| (81-91) B | | |
| (69-80) C | 73 | 80 |
| (55-68) D | | |
| (39-54) E | | |
| (21-38) F | | |
| (1-20) G | | |
| Not energy efficient - higher running costs | | |
| England & Wales | EU Directive 2002/91/EC  | |



GROUND FLOOR
562 sq.ft. (52.2 sq.m.) approx.



TOTAL FLOOR AREA : 562 sq.ft. (52.2 sq.m.) approx.
Measurements are approximate. Not to scale. Illustrative purposes only.
Made with Metropix ©2024



These particulars are believed to be accurate but they are not guaranteed and do not form a contract. Neither Jordan Fishwick nor the vendor or lessor accept any responsibility in respect of these particulars, which are not intended to be statements or representations of fact and any intending purchaser or lessee must satisfy himself by inspection or otherwise as to the correctness of each of the statements contained in these particulars. Any floorplans on this brochure are for illustrative purposes only and are not necessarily to scale.

Offices at: Offices at Chorlton, Didsbury, Disley, Hale, Glossop, Macclesfield, Manchester Deansgate, Manchester Whitworth Street, New Mills, Sale, Wilmslow and Withington