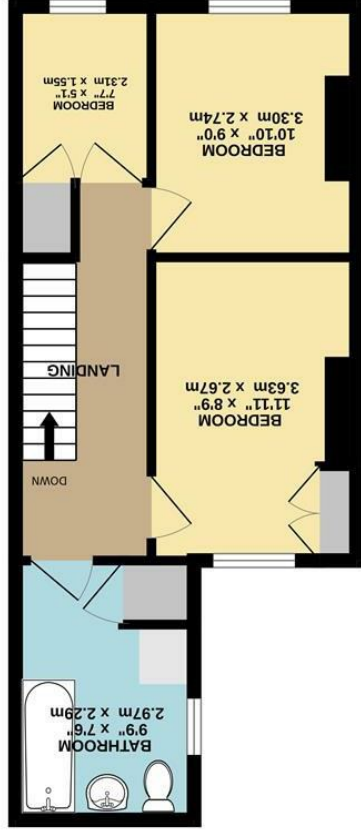
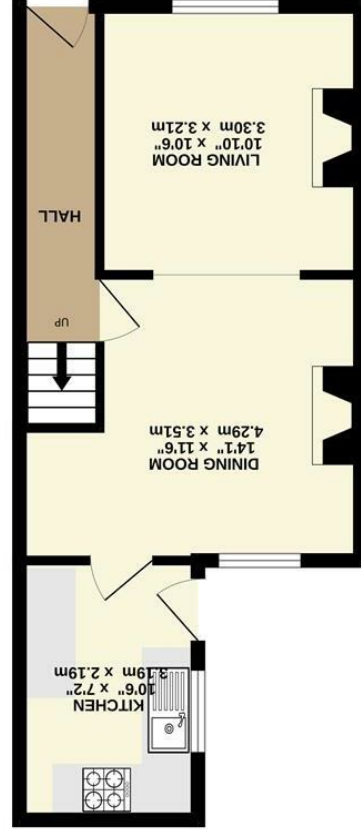


While every attempt has been made to ensure the accuracy of the floorplans contained herein, measurements of rooms, corridors and all other areas are approximate and the responsibility to verify the accuracy of such measurements lies with the prospective purchaser. The services, fixtures and appliances shown have been treated and no guarantee is given. Measurements are to the internal face of walls and doors are shown as fully open.



1ST FLOOR



GROUND FLOOR



34 Buxton Road, Whaley Bridge, High Peak, SK23 7JE

£255,000



The Property

Set back from the road behind a generous landscaped garden, a superbly presented three bedroom end of terrace. Ready to walk into and conveniently located in Whaley Bridge, this beautiful home is guaranteed to impress. Pvc double glazing, gas central heating and comprising: entrance hall, living room open to a dining room, kitchen with Granite worktops, two first floor double bedrooms, a box room and spacious bathroom with laundry. Indian Stone paved enclosed rear garden, front sun terrace and lawn garden. Viewing recommended.



- Superbly Presented Throughout
- Conveniently Located For Whaley Bridge
- Three Bedrooms
- Living Room And Dining Room
- Landscaped Gardens
- Perfect For the First Time Buyer
- Pvc Double Glazing and Gas Central Heating
- Spacious Bathroom With Laundry
- Kitchen With Granite Tops

Postcode - SK23 7JE
EPC Rating - C
Local Authority - High Peak
Council Tax - B

