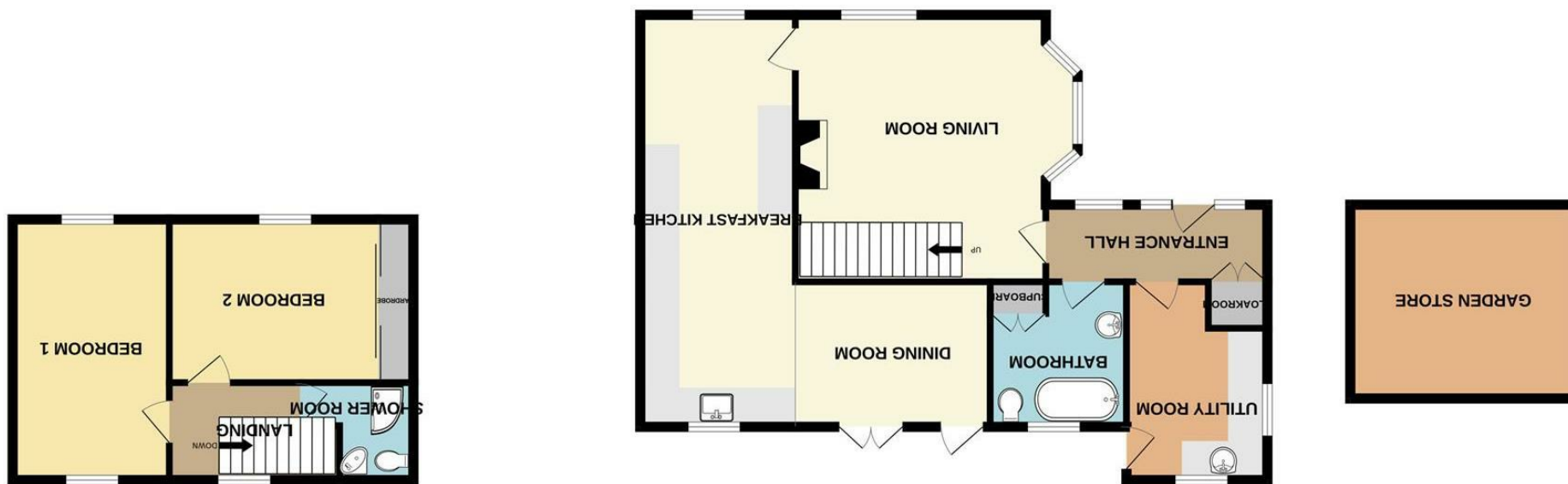


Whilst every attempt has been made to ensure the accuracy of the floorplan contained here, measurements of doors, windows, rooms and any other items are approximate and no responsibility is taken for any error, omission or mis-statement. This plan is for illustrative purposes only and should be used as such by any prospective purchaser. The services, systems and appliances shown have not been tested and no guarantee as to their operability or efficiency can be given.
 Made with Metropix ©2024



These particulars are believed to be accurate but they are not guaranteed and do not form a contract. Neither Jordan Fishwick nor the vendor or lessor accept any responsibility in respect of these particulars, which are not intended to be statements or representations of fact and any intending purchaser or lessee must satisfy himself by inspection or otherwise as to the correctness of each of the statements contained in these particulars. Any floorplans on this brochure are for illustrative purposes only and are not necessarily to scale.

Offices at: Chorlton, Didsbury, Disley, Hale, Glossop, Macclesfield, Manchester Deansgate, Manchester Whitworth Street, New Mills, Sale, Wilmslow and Withington





Clay Lane Altrincham WA15 7TR

£550,000



The Property

Welcome to this charming two-bedroom end terrace cottage located on Clay Lane in the village of Hale. This delightful property offers a perfect blend of countryside living with the convenience of being close to local amenities. As you step inside, you are greeted by a cozy and inviting atmosphere. The cottage boasts a generously sized living area with a wood burning stove which leads through to a farm style kitchen, wrapping around to enjoy a spacious dining area with an outlook over the rear garden and countryside beyond. Off the entrance hallway there is access to a utility room and downstairs bathroom. To the first floor are two double bedrooms with countryside views which are both serviced by a shower room. The property boasts off road parking to the front of the property, whilst to the rear there is a beautifully manicured garden with picturesque views. Whether you are looking for a peaceful retreat or a cozy home to start a new chapter, this two-bedroom cottage on Clay Lane is sure to capture your heart. Don't miss the opportunity to make this charming property your own. Viewings of this property are highly recommended and not to be missed.

Directions

WA15 7TR



- Semi-Rural Location
- Cozy Two Bedroom End Terrace Cottage
- Off-Road Parking
- Spectacular Views from the Garden
- Two Double Bedrooms
- Farm Style Kitchen
- Two Reception Rooms
- Utility Room

Postcode - WA15 7TR

EPC Rating -

Floor Area - sq ft

Local Authority - Trafford

Council Tax - C

