



jordan fishwick

1 Bank Place, Green Lane, SK9 1LL
Offers Over £325,000

Bank Place Wilmslow SK9 1LL

Offers Over £325,000




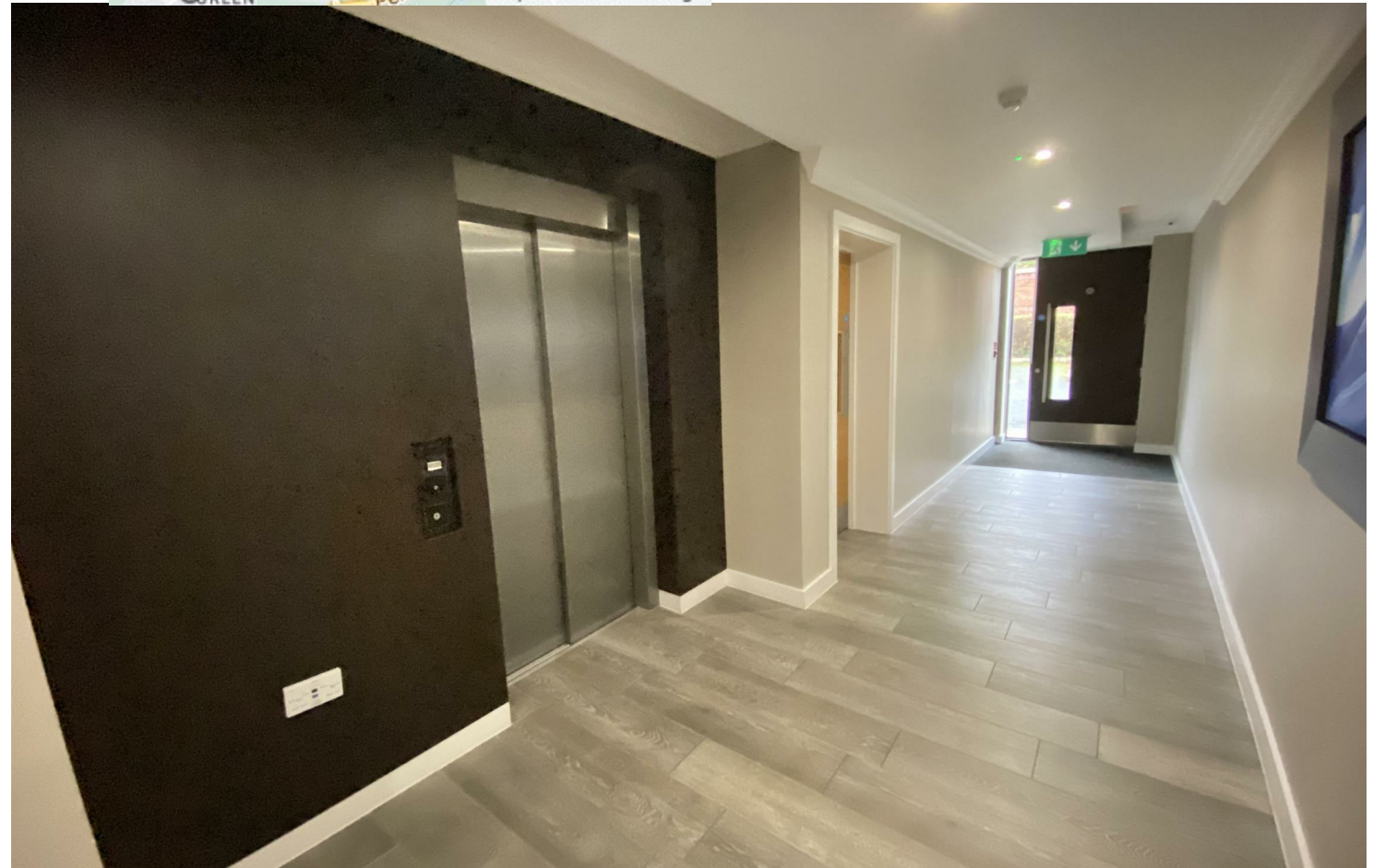
This stunning ground floor executive apartment forms part of this desirable development within central Wilmslow. The property has undergone a programme of modernisation to create fabulous accommodation that far surpasses its original design. The well proportioned accommodation comprises in brief: communal entrance hallway, private entrance hall, stunning open plan living room and refitted kitchen, utility, master bedroom with en-suite, second double bedroom and a great size modern fitted bathroom. The apartment is just a short stroll to shops and local restaurants, whilst Wilmslow train station is also within convenient reach. An allocated parking space is set behind electric gates. Internal viewings are essential.



- Executive Apartment
- Contemporary Living Kitchen
- Two Double Bedrooms
- Short Stroll to Wilmslow train station
- Two Bathrooms
- Ground Floor
- Heart of Wilmslow Town Centre
- Allocated Parking



Energy Efficiency Rating		
	Current	Potential
Very energy efficient - lower running costs		
(92 plus) A		
(81-91) B		
(69-80) C	72	73
(55-68) D		
(39-54) E		
(21-38) F		
(1-20) G		
Not energy efficient - higher running costs		
England & Wales	EU Directive 2002/91/EC 	





Whilst every attempt has been made to ensure the accuracy of the floor plan contained here, measurements of doors, windows, rooms and any other items are approximate and no responsibility is taken for any error, omission, or mis-statement. This plan is for illustrative purposes only and should be used as such by any prospective purchaser. The services, systems and appliances shown have not been tested and no guarantee as to their operability or efficiency can be given
 Made with Metropix ©2018



These particulars are believed to be accurate but they are not guaranteed and do not form a contract. Neither Jordan Fishwick nor the vendor or lessor accept any responsibility in respect of these particulars, which are not intended to be statements or representations of fact and any intending purchaser or lessee must satisfy himself by inspection or otherwise as to the correctness of each of the statements contained in these particulars. Any floorplans on this brochure are for illustrative purposes only and are not necessarily to scale.

Offices at: Chorlton, Didsbury, Disley, Hale, Glossop, Macclesfield, Manchester Deansgate, Manchester Whitworth Street, New Mills, Sale, Wilmslow and Withington

36-38 Alderley Road, Wilmslow, Cheshire, SK9 1JX
 01625 532000

wilmslow@jordanfishwick.co.uk
 www.jordanfishwick.co.uk