



jordan fishwick

Beechwood Avenue
Chorlton



Beechwood Avenue Chorlton M21 8UA

£2,450 Per Calendar Month



The Property

**** AVAILABLE JULY **** We are delighted to offer this beautifully presented 4 Bedroom period Terrace situated on a highly regarded cul-de-sac in the heart of Chorlton. The property is over 3 floors and offers spacious and light accommodation throughout, with attention to detail on all decoration and fittings. In brief the property offers: entrance hall, open plan large Lounge and Dining room, fully fitted Kitchen. To the first floor there are 3 good sized bedrooms with a family bathroom-shower over bath. Second floor: large bedroom with stylish bathroom-walk in shower, built in storage on the landing with sky light. To the front of the property there is a walled garden with porch, to the rear there is a large landscaped garden with dining patio area and steps leading to a large wall lined lawn. There are cellar chambers for additional storage. The property is offered as Furnished which can have some negotiation if required. This property is a rare find in central Chorlton and would ideally suit a family or professional couple, sharers will also be considered. The property is in catchment for desirable schools and is one to not be missed.

***** To arrange a viewing please call 0161 393 7539 / email yasminedowe@jordanfishwick.co.uk *****

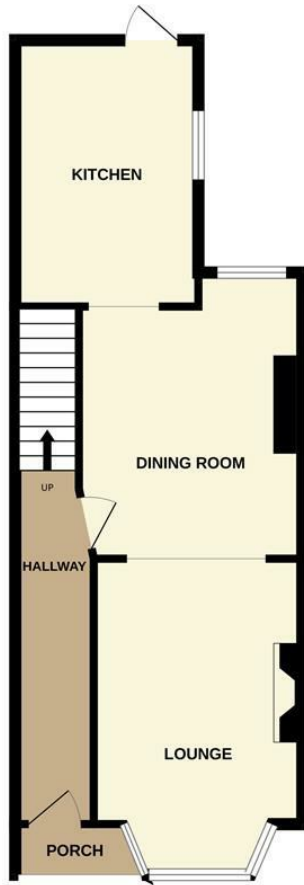
Directions

- Council Tax Band C - EPC Grade D
- 4 Bedroom & 2 Bathrooms
- Stylishly presented and furnished throughout
- Large Lanscaped Garden
- Highly regarded cul-de-sac
- Stunning accommodation over 3 floors
- Available July

Postcode - M21 8UA
EPC Rating - D
Floor Area - sq ft
Local Authority - Manchester
Council Tax - C



GROUND FLOOR



1ST FLOOR



2ND FLOOR



Whilst every attempt has been made to ensure the accuracy of the floorplan contained here, measurements of doors, windows, rooms and any other items are approximate and no responsibility is taken for any error, omission or mis-statement. This plan is for illustrative purposes only and should be used as such by any prospective purchaser. The services, systems and appliances shown have not been tested and no guarantee as to their operability or efficiency can be given.
Made with Metropix ©2024



These particulars are believed to be accurate but they are not guaranteed and do not form a contract. Neither Jordan Fishwick nor the vendor or lessor accept any responsibility in respect of these particulars, which are not intended to be statements or representations of fact and any intending purchaser or lessee must satisfy himself by inspection or otherwise as to the correctness of each of the statements contained in these particulars. Any floorplans on this brochure are for illustrative purposes only and are not necessarily to scale.

Offices at: Offices at Chorlton, Didsbury, Disley, Hale, Glossop, Macclesfield, Manchester Deansgate, Manchester Whitworth Street, New Mills, Sale, Wilmslow and Withington

410-412 Barlow Moor Road, Chorlton, Manchester, M21
8AD

www.jordanfishwick.co.uk