



jordan fishwick

TIMPERLEY
Mainwood Road



Mainwood Road, Timperley, WA15 7BX

£595,000



The Property

Jordan Fishwick are proud to present this spacious and well presented throughout, semi-detached property. Featuring 3 reception rooms and nestled in a sought after location within easy reach of Timperley Village, Hale Village and the incredibly popular market town of Altrincham. The outstanding local schools which Trafford is renowned for are also nearby, including Altrincham College. In brief the property comprises: entrance porch, lounge, dining room, kitchen, downstairs WC, conservatory with Bi-fold doors leading to the rear landscaped garden and large storage area/utility to the side. To the first floor there are three bedrooms including the master bedroom with Ensuite shower room. There is also a beautifully appointed 4-piece suite family bathroom. To the second floor there is a part converted loft which would be suitable for a variety of uses. Externally to the rear there is a garden room providing ample storage. The rear garden is mainly laid to lawn with an initial patio area. To the front a driveway provides ample off road parking.

Directions

WA15 7BX



- Three Double Bedrooms
- Three Reception Rooms
- Beautifully Manicured Garden
- Ample Off-Road Parking
- Master Bedroom with Ensite
- Beautiful Fitted Kitchen
- Close to Local Schools
- Walking Distance to Timperley Village
- Converted Loft

Postcode - WA15 7BX

EPC Rating - C

Floor Area - 2068.00 sq ft

Local Authority - Trafford

Council Tax - C



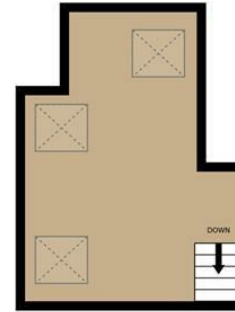
GROUND FLOOR
1106 sq.ft. (102.7 sq.m.) approx.



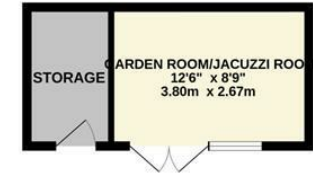
1ST FLOOR
580 sq.ft. (53.9 sq.m.) approx.



2ND FLOOR



3RD FLOOR



TOTAL FLOOR AREA : 2068 sq.ft. (192.1 sq.m.) approx.

Whilst every attempt has been made to ensure the accuracy of the floorplan contained here, measurements of doors, windows, rooms and any other items are approximate and no responsibility is taken for any error, omission or mis-statement. This plan is for illustrative purposes only and should be used as such by any prospective purchaser. The services, systems and appliances shown have not been tested and no guarantee as to their operability or efficiency can be given.
Made with Metropix ©2024



These particulars are believed to be accurate but they are not guaranteed and do not form a contract. Neither Jordan Fishwick nor the vendor or lessor accept any responsibility in respect of these particulars, which are not intended to be statements or representations of fact and any intending purchaser or lessee must satisfy himself by inspection or otherwise as to the correctness of each of the statements contained in these particulars. Any floorplans on this brochure are for illustrative purposes only and are not necessarily to scale.

Offices at: Chorlton, Didsbury, Disley, Hale, Glossop, Macclesfield, Manchester Deansgate, Manchester Whitworth Street, New Mills, Sale, Wilmslow and Withington

0161 929 9797

hale@jordanfishwick.co.uk
www.jordanfishwick.co.uk