



Jordan fishwick

96 Clarendon Road, M16 8LA
£900 Per Calendar Month



Clarendon Road Manchester M16 8LA

£900 Per Calendar Month



The Property

*****AVAILABLE NOW ***** FULL FOR VIEWINGS ***** We are delighted to offer this newly renovated well presented one bedroom property situated in Chorlton close to all Amenities and Transport links. The property comprises of large open plan lounge to fully fitted kitchen with all appliances, separate double bedroom, bathroom with shower over bath and entrance hall. The property is fully furnished and offers off road parking to the rear of the property.

***** To arrange a viewing call 0161 393 7539 *****

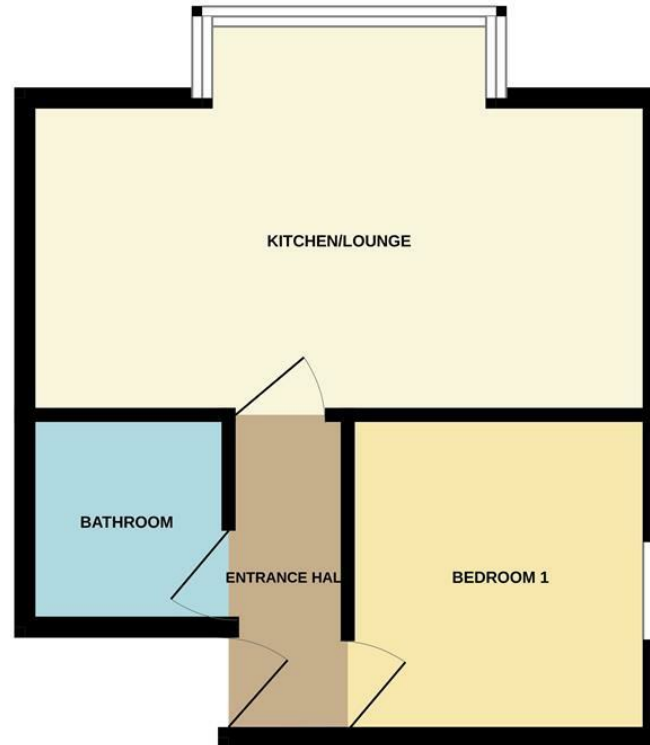
- Council Tax Band A - EPC Grade D
- New Kitchen
- Refurbished throughout
- Furnished
- Close to Chorlton centre
- Off road parking
- Available Now



Energy Efficiency Rating		
	Current	Potential
Very energy efficient - lower running costs		
(92 plus) A		
(81-91) B		
(69-80) C		76
(55-68) D	66	
(39-54) E		
(21-38) F		
(1-20) G		
Not energy efficient - higher running costs		
England & Wales	EU Directive 2002/91/EC	



GROUND FLOOR
314 sq.ft. (29.2 sq.m.) approx.



TOTAL FLOOR AREA : 314 sq.ft. (29.2 sq.m.) approx.

Whilst every attempt has been made to ensure the accuracy of the floorplan contained here, measurements of doors, windows, rooms and any other items are approximate and no responsibility is taken for any error, omission or mis-statement. This plan is for illustrative purposes only and should be used as such by any prospective purchaser. The services, systems and appliances shown have not been tested and no guarantee as to their operability or efficiency can be given.
Made with Metropix 62024



These particulars are believed to be accurate but they are not guaranteed and do not form a contract. Neither Jordan Fishwick nor the vendor or lessor accept any responsibility in respect of these particulars, which are not intended to be statements or representations of fact and any intending purchaser or lessee must satisfy himself by inspection or otherwise as to the correctness of each of the statements contained in these particulars. Any floorplans on this brochure are for illustrative purposes only and are not necessarily to scale.

Offices at: Offices at Chorlton, Didsbury, Disley, Hale, Glossop, Macclesfield, Manchester Deansgate, Manchester Whitworth Street, New Mills, Sale, Wilmslow and Withington