



jordan fishwick

9 Swallow Court, Lacey Green, SK9 4BL
PCM £1,200 PCM

Swallow Court WILMSLOW

£1,200 PCM




FURNISHED OR PART FURNISHED AVAILABLE NOW- VIEWING RECOMMENDED

This two double bedroom two bathroom apartment is situated on the second floor of this attractive development. Located to the North of Wilmslow town centre and within easy walking distance of the train station and town centre this top floor apartment also benefits from allocated off road parking. Offering modern spacious accommodation with two bathrooms and open plan living along with allocated off road parking. Spacious entrance hallway with storage, lounge open to modern fully fitted kitchen. Main bedroom with en-suite bathroom and 2nd double bedroom, bathroom off the hallway with shower over bath Communal Grounds. Off Road parking. Contact Wilmslow 01625 536300 £1200.00pcm



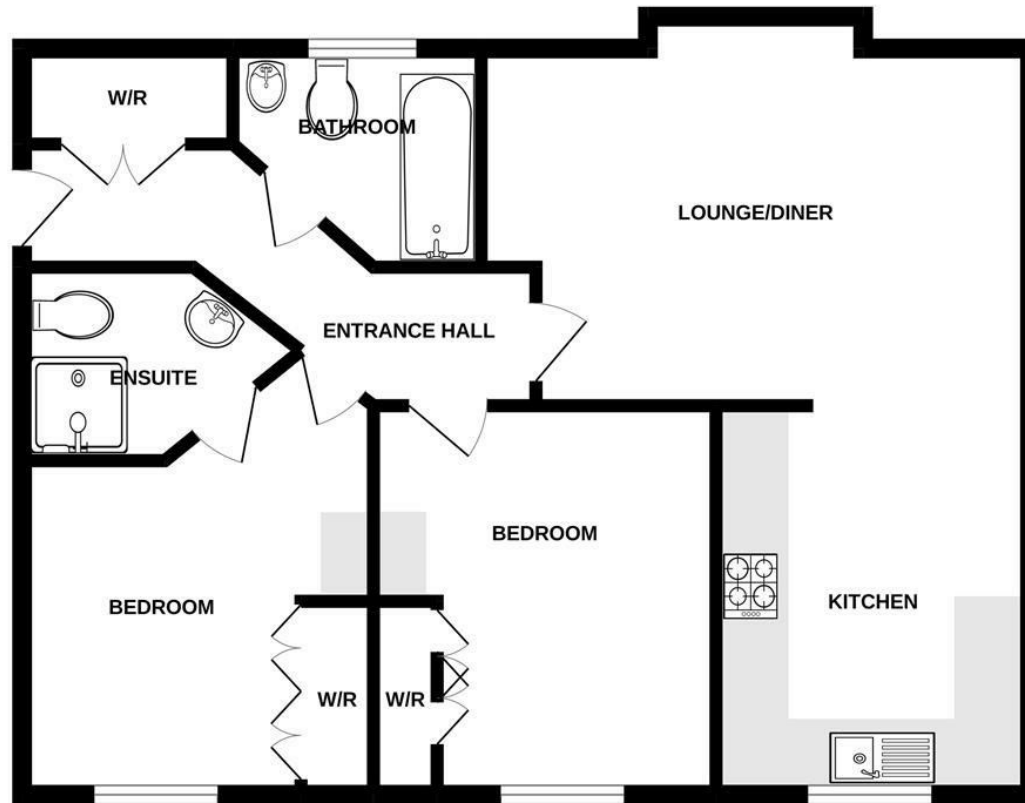
- POPULAR ESTATE
- SECOND FLOOR APARTMENT
- TWO DOUBLE BEDROOMS
- TWO BATHROOMS
- COUNCIL TAX C



Energy Efficiency Rating		
	Current	Potential
Very energy efficient - lower running costs		
(92 plus) A		
(81-91) B		
(69-80) C	74	79
(55-68) D		
(39-54) E		
(21-38) F		
(1-20) G		
Not energy efficient - higher running costs		
England & Wales	EU Directive 2002/91/EC 	



GROUND FLOOR



Measurements are approximate. Not to scale. Illustrative purposes only
Made with Metropix ©2022



These particulars are believed to be accurate but they are not guaranteed and do not form a contract. Neither Jordan Fishwick nor the vendor or lessor accept any responsibility in respect of these particulars, which are not intended to be statements or representations of fact and any intending purchaser or lessee must satisfy himself by inspection or otherwise as to the correctness of each of the statements contained in these particulars. Any floorplans on this brochure are for illustrative purposes only and are not necessarily to scale.

Offices at: Chorlton, Didsbury, Disley, Hale, Glossop, Macclesfield, Manchester Deansgate, Manchester Whitworth Street, New Mills, Sale, Wilmslow and Withington

01625 536300

wilmslow@jordanfishwick.co.uk
www.jordanfishwick.co.uk