



Jordan fishwick

WEST DIDSBURY
Blackburn Gardens



Blackburn Gardens, West Didsbury, M20 3YH

Guide Price £350,000



The Property

A modern, two double bedroom, SEMI DETACHED house forming part of a SELECT DEVELOPMENT which is within easy reach of DIDSBURY & WEST DIDSBURY VILLAGES and backing onto The Northern Tennis Club. 864 sq ft. Double glazed windows are complemented by gas central heating, with the accommodation in outline comprising:- Entrance hall with stairs leading to the first floor, living room with feature fireplace, L-shaped dining kitchen and patio door opening to the conservatory, with the first floor landing giving way to the two double bedrooms and shower room with chrome suite. In addition there is a downstairs WC, attractive rear garden and parking to the front. *No Onward Chain*

Directions

M20 3YH



- Modern semi detached
- Select courtyard development
- Backing onto The Northern Tennis Club
- Close to Didsbury & West Didsbury
- Two double bedrooms
- Living room & conservatory
- L-shaped dining kitchen
- Double glazing & GCH
- Attractive rear garden & parking
- NO ONWARD CHAIN

Postcode - M20 3YH

EPC Rating - C

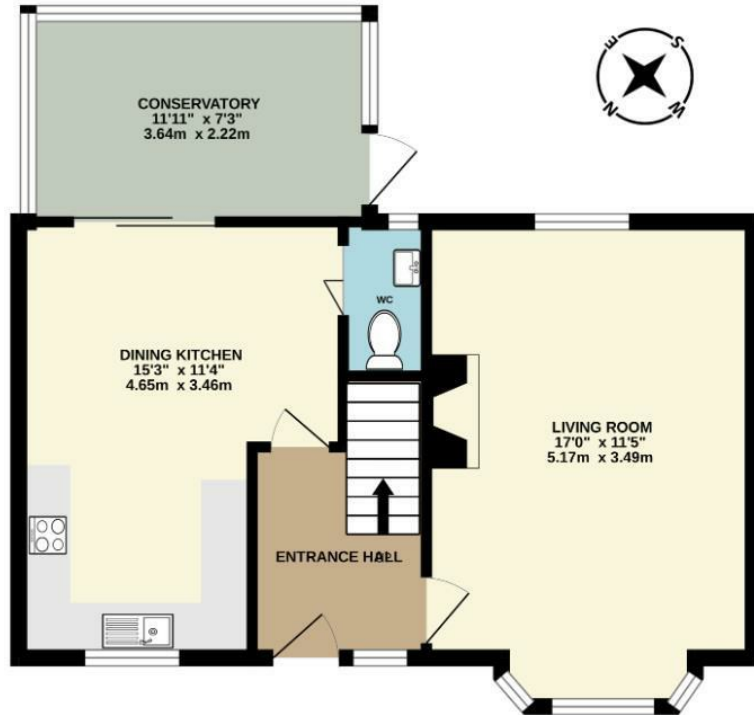
Floor Area - 864.00 sq ft

Local Authority - Manchester City Council

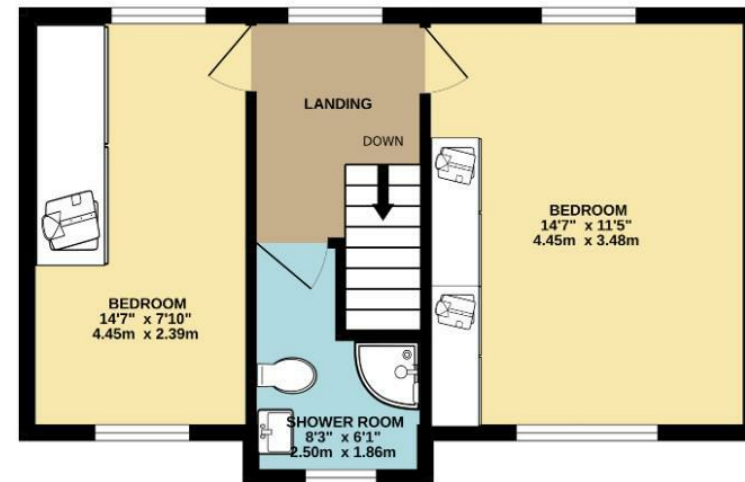
Council Tax - D



GROUND FLOOR
484 sq.ft. (45.0 sq.m.) approx.



1ST FLOOR
380 sq.ft. (35.3 sq.m.) approx.



TOTAL FLOOR AREA : 864 sq.ft. (80.2 sq.m.) approx.
Measurements are approximate. Not to scale. Illustrative purposes only
Made with Metropix ©2024



These particulars are believed to be accurate but they are not guaranteed and do not form a contract. Neither Jordan Fishwick nor the vendor or lessor accept any responsibility in respect of these particulars, which are not intended to be statements or representations of fact and any intending purchaser or lessee must satisfy himself by inspection or otherwise as to the correctness of each of the statements contained in these particulars. Any floorplans on this brochure are for illustrative purposes only and are not necessarily to scale.

Offices also at: Wilmslow, Macclesfield, Hale, Sale, Chorlton, Glossop, Manchester & Salford

757-759 Wilmslow Road, Didsbury Village, Manchester

0161 445 4480

didsbury@jordanfishwick.co.uk
www.jordanfishwick.co.uk