



jordan fishwick

Thornway High Lane Stockport



Thornway High Lane Stockport SK6 8EL

£375,000



The Property

Standing in a generous plot within a sought after area, convenient location is High Lane, a spacious and versatile TWO DOUBLE BEDROOM detached bungalow. Offered for sale with No Chain and tremendous potential. Pvc double glazing, gas central heating with NEW boiler and comprising: Entrance porch, hallway, living room, conservatory, kitchen, rear porch, two bedrooms, shower room and a wc. Integral single garage, driveway and fantastic, enclosed, private lawn gardens. Viewing highly recommended.



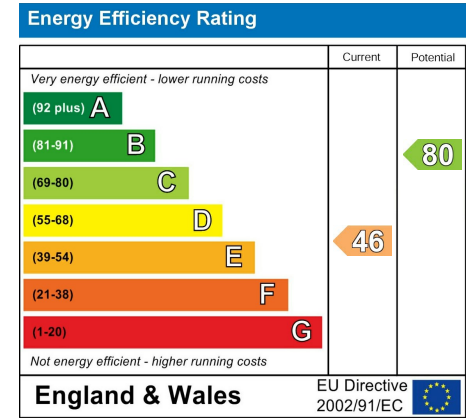
- Detached True Bungalow
- Two Double Bedrooms
- Generous Private Gardens
- Spacious Accommodation
- Convenient Sought After Location
- No Chain
- Driveway and Garage
- 19FT Living Room and Conservatory
- Pvc Double Glazing and Gas Central Heating

Postcode SK6 8EL

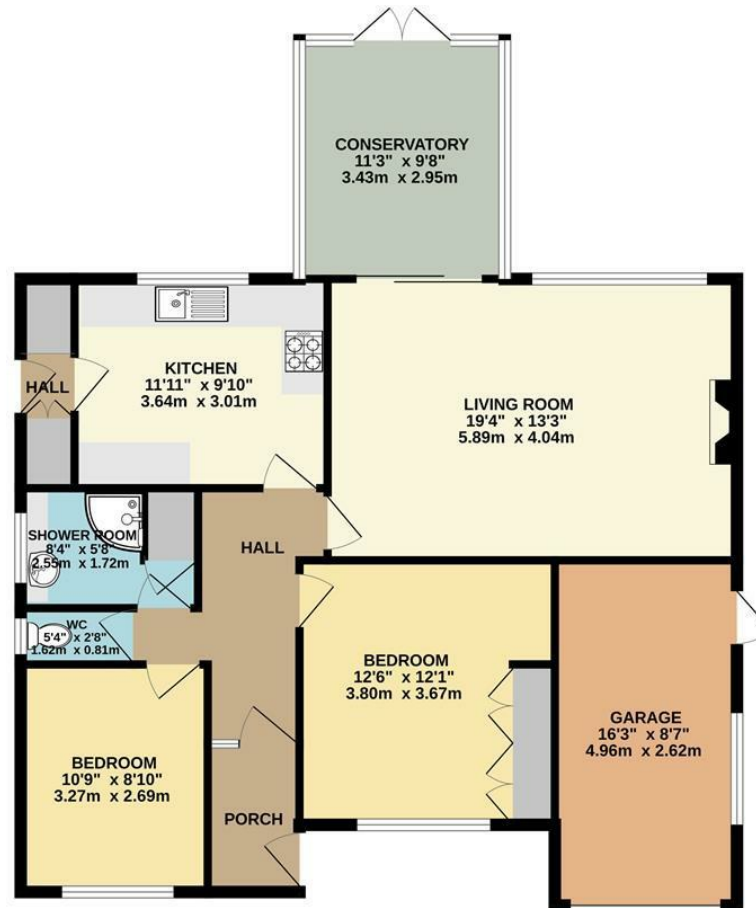
EPC Rating E

Local Authority Stockport

Council Tax D



GROUND FLOOR



Whilst every attempt has been made to ensure the accuracy of the floorplan contained here, measurements of doors, windows, rooms and any other items are approximate and no responsibility is taken for any error, omission or mis-statement. This plan is for illustrative purposes only and should be used as such by any prospective purchaser. The services, systems and appliances shown have not been tested and no guarantee as to their operability or efficiency can be given.
Made with Metropix ©2024



These particulars are believed to be accurate but they are not guaranteed and do not form a contract. Neither Jordan Fishwick nor the vendor or lessor accept any responsibility in respect of these particulars, which are not intended to be statements or representations of fact and any intending purchaser or lessee must satisfy himself by inspection or otherwise as to the correctness of each of the statements contained in these particulars. Any floorplans on this brochure are for illustrative purposes only and are not necessarily to scale.

Offices at: Chorlton, Didsbury, Disley, Hale, Glossop, Macclesfield, Manchester Deansgate, Manchester Whitworth Street, New Mills, Sale, Wilmslow and Withington

14 Market Street, Disley, Cheshire, SK12 2AA

01663 76 78 78

disley@jordanfishwick.co.uk

www.jordanfishwick.co.uk