



Jordan fishwick

Apt 2 Advent House, Block 1, M4 7EP
£1,100 Per Calendar Month



The Property

PLEASE NOTE - THE PROPERTY IS CURRENTLY UNDER BUILDING MAINTENANCE TILL WINTER 2024

Available Late June . A superb ground floor corner apartment in this popular development in Ancoats which is positioned for easy access to Piccadilly Station and the thriving pulse of Manchester's city centre. Entrance hallway with utility cupboard and built in double wardrobes, spacious lounge, stylish kitchen with a range of integrated appliances, master bedroom with en-suite wetroom, second double bedroom and a contemporary bathroom. Furnished. No parking. Tax Band C. EPC Rating C.

VIDEO/ PHOTO OFFERS NOT ACCEPTED - PLEASE CALL TO BOOK A VIEWING


Advent House 2 Isaac Way M4 7EP

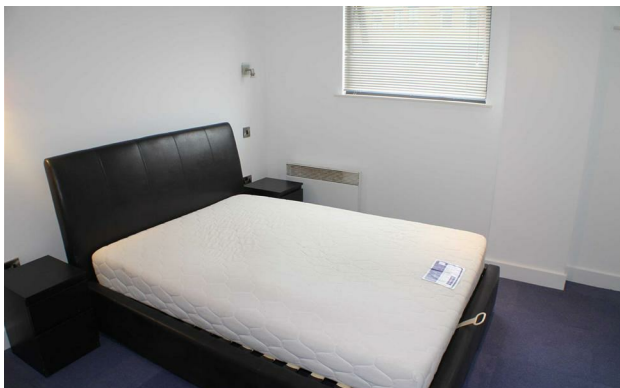
£1,100 Per Calendar Month



- Available Late June
- Corner Aspect - Ground Floor Two Bed
- Large Living Room
- Fitted Kitchen
- Furnished
- Tax Band C
- No Parking
- Close to Tram Stop
- Close to City Centre



Energy Efficiency Rating		
	Current	Potential
Very energy efficient - lower running costs		
(92 plus) A		
(81-91) B		
(69-80) C		
(55-68) D		
(39-54) E		
(21-38) F		
(1-20) G		
Not energy efficient - higher running costs		
	71	79
England & Wales	EU Directive 2002/91/EC 	





These particulars are believed to be accurate but they are not guaranteed and do not form a contract. Neither Jordan Fishwick nor the vendor or lessor accept any responsibility in respect of these particulars, which are not intended to be statements or representations of fact and any intending purchaser or lessee must satisfy himself by inspection or otherwise as to the correctness of each of the statements contained in these particulars. Any floorplans on this brochure are for illustrative purposes only and are not necessarily to scale.

Offices at: Offices at Chorlton, Didsbury, Disley, Hale, Glossop, Macclesfield, Manchester Deansgate, Manchester Whitworth Street, New Mills, Sale, Wilmslow and Withington