



Jordan fishwick

Plot 20 Hayfield Road, New Mills, SK22

Guide Price £439,950



Hayfield Road High Peak SK22 4HY

Prices From £439,950



The Property

The Shakespeare is a popular four bedroom detached family home with an integral single garage. Step inside and you'll find a spacious lounge with an impressive bay window, creating a light, bright and airy home. There's plenty of space for the whole family to relax and put their feet up after a busy day.

The open plan kitchen/diner leads to the garden through a set of french doors, allowing the light to flow throughout your home. A separate utility room can be found adjacent to the kitchen, providing handy storage solutions. The integral garage provides you with even more storage space, but how you choose to use it, is completely up to you.

On the first floor, you'll find 4 bedrooms for the family to choose from. Both the main and second bedroom enjoy private en-suite's, so arguing over the bathroom in the morning really will become a thing of the past. There are two further good sized bedrooms and a family bathroom for the rest of the family.

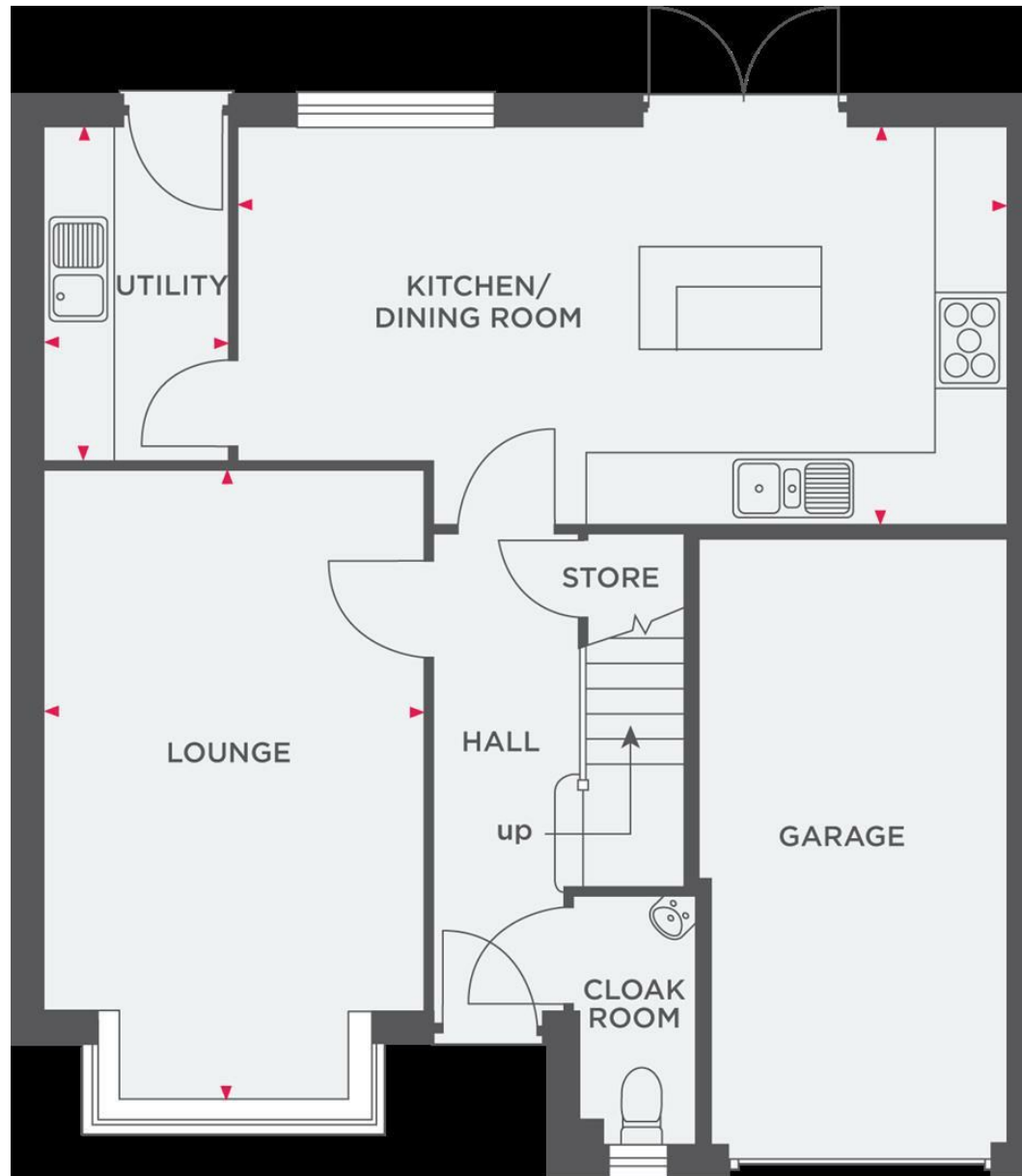
If you're looking to work from home, one of the bedrooms could comfortably double up as a home office.

- 4 bedrooms
- Luxury Fitted Kitchen/Diner with a Choice of Finishes
- Spacious lounge with bay window
- 2 En-suite bathrooms
- Choice of Porcelanosa tiles in bathroom/en-suites
- Utility room
- French doors to rear garden
- Single Integral garage
- 10 year NHBC warranty
- - 2 year builders warranty



Energy Efficiency Rating		
	Current	Potential
Very energy efficient - lower running costs		
(92 plus) A		
(81-91) B		
(69-80) C		
(55-68) D		
(39-54) E		
(21-38) F		
(1-20) G		
Not energy efficient - higher running costs		
England & Wales	EU Directive 2002/91/EC	





These particulars are believed to be accurate but they are not guaranteed and do not form a contract. Neither Jordan Fishwick nor the vendor or lessor accept any responsibility in respect of these particulars, which are not intended to be statements or representations of fact and any intending purchaser or lessee must satisfy himself by inspection or otherwise as to the correctness of each of the statements contained in these particulars. Any floorplans on this brochure are for illustrative purposes only and are not necessarily to scale.

Offices at: Chorlton, Didsbury, Disley, Hale, Glossop, Macclesfield, Manchester Deansgate, Manchester Whitworth Street, New Mills, Sale, Wilmslow and Withington