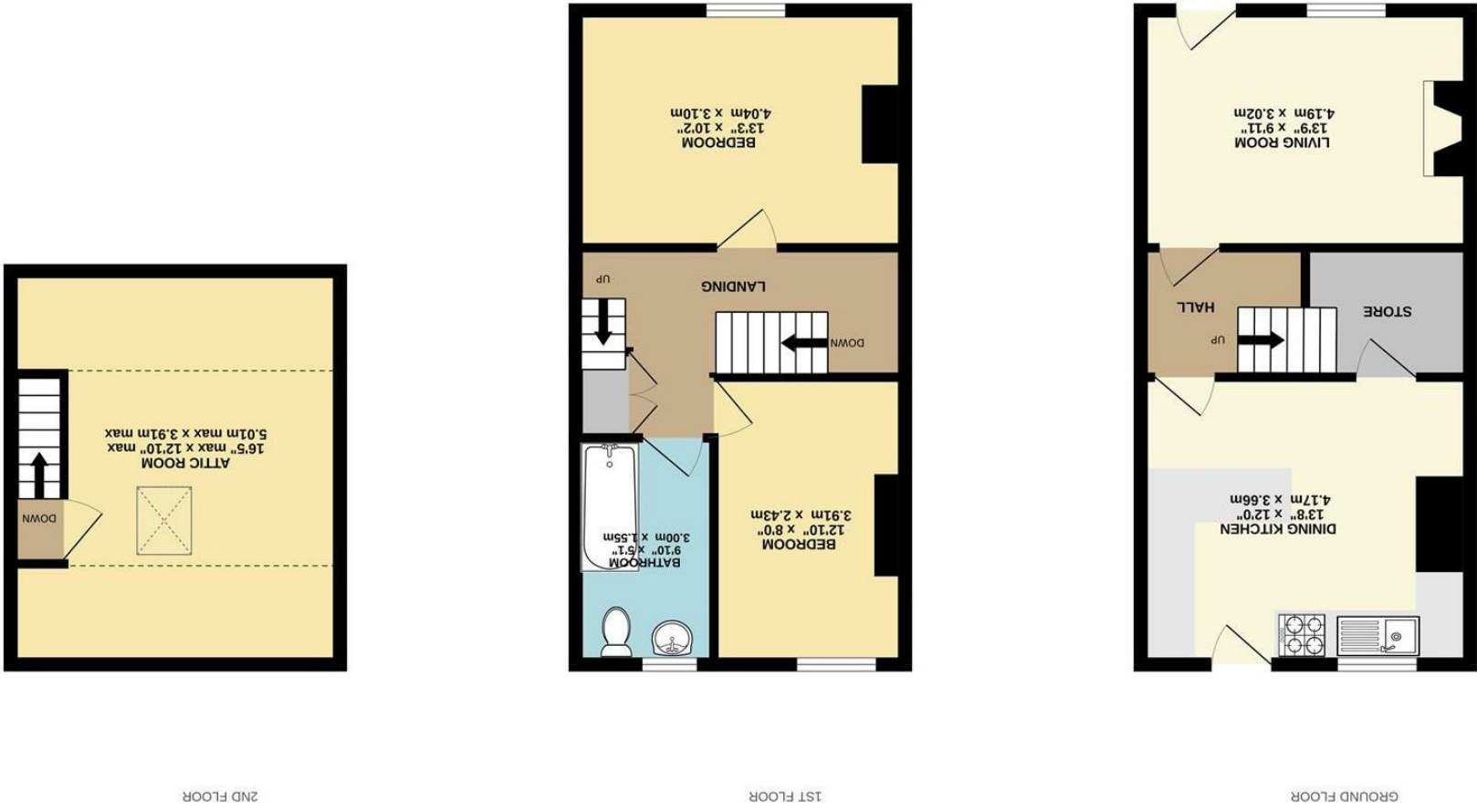


These particulars are believed to be accurate but they are not guaranteed and do not form a contract. Neither Jordan Fishwick nor the vendor or lessor accept any responsibility in respect of these particulars, which are not intended to be statements or representations of fact and any intending purchaser or lessee must satisfy himself by inspection or otherwise as to the correctness of each of the statements contained in these particulars. Any floorplans on this brochure are for illustrative purposes only and are not necessarily to scale.

Whilst every attempt has been made to ensure the accuracy of the floorplan contained here, measurements of doors, windows, rooms and any other items are approximate and no responsibility is taken for any error, omission or mis-statement. This plan is for illustrative purposes only and should be used as such by any prospective purchaser. The services, systems and appliances shown have not been tested and no guarantee as to their operability or efficiency can be given. Made with Heteropix ©2024







7 Reservoir Road, Whaley Bridge,  
High Peak, SK23 7BL

£250,000



### The Property

Standing in an extremely convenient and sought after location in the heart of Whaley Bridge, within easy reach of the shops, railway station and amenities, a spacious stone built terraced home. Arranged over three floors with open forward views, paved frontage and raised lawn gardens. Comprising: living room, central hall, dining kitchen with store cupboard, two good sized first floor bedrooms, bathroom with white suite and a second floor attic room. Pvc double glazing and gas central heating. Perfect for the first time buyer or buy to let investor. Viewing recommended



- Sought After Location
- Two Generous Bedrooms Plus Attic
- Forward Views
- Close To Shops and Railway Station
- Stone Built Terraced Home
- Paved Frontage and Grass Rear Garden
- Pvc Double Glazing and Gas Central heating
- Ideal For First Time Buyer or Investor
- No Chain

Postcode - SK23 7BL  
 EPC Rating -  
 Local Authority - High Peak  
 Council Tax - B

