



jordan fishwick

Blackbrook Drive Chinley High Peak

Blackbrook Drive Chinley High Peak SK23 6BF

£335,000



The Property

Located on the popular Forge Manor development in Chinley and close to the village amenities and primary school, a four bedroom semi-detached family home. Formerly the 'Show Home' and presented to a very high standard with accommodation arranged over three floors, this stunning property has to be seen. Enjoying a private position with ample driveway parking, enclosed gardens and a detached garage. Comprising: entrance hall, wc, living room, fitted dining kitchen, three first floor bedrooms, family bathroom and second floor master bedroom with en-suite shower room. Pleasant views and remaining new build warranty. Viewing recommended.




- Stunning Former Show Home
- Popular Modern Development
- Four Bedroom Semi-Detached
- Still Under New Build Warranty
- Second Floor Master Suite
- Close to Chinley Amenities
- Enclosed Private Gardens
- Ample Driveway Parking and Garage
- ****Freehold****

Postcode SK23 6BF

EPC Rating B

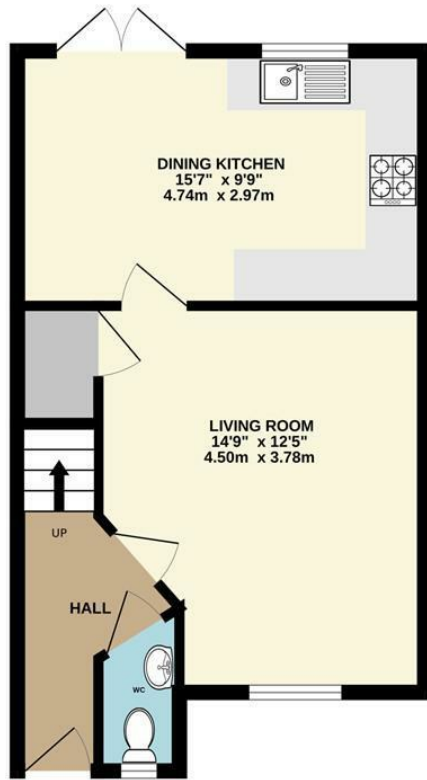
Local Authority High Peak

Council Tax D

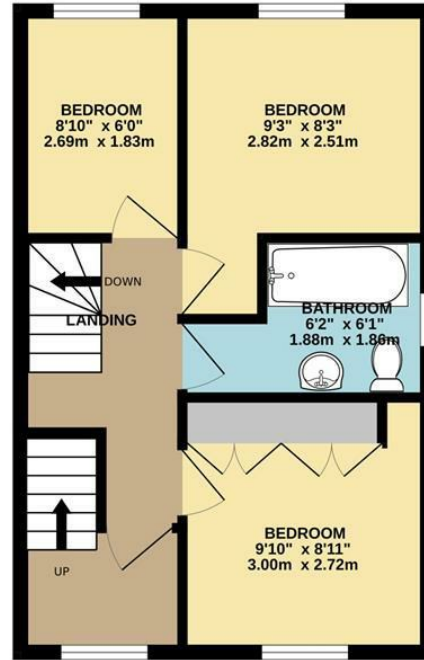
Energy Efficiency Rating		Current	Potential
Very energy efficient - lower running costs			
(92 plus) A			94
(81-91) B		84	
(69-80) C			
(55-68) D			
(39-54) E			
(21-38) F			
(1-20) G			
Not energy efficient - higher running costs			
England & Wales		EU Directive 2002/91/EC 	



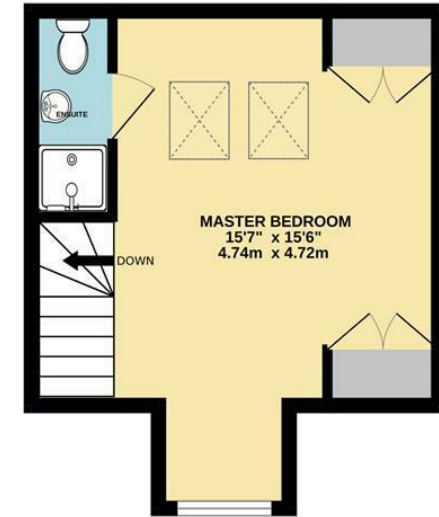
GROUND FLOOR



1ST FLOOR



2ND FLOOR



Whilst every attempt has been made to ensure the accuracy of the floorplan contained here, measurements of doors, windows, rooms and any other items are approximate and no responsibility is taken for any error, omission or mis-statement. This plan is for illustrative purposes only and should be used as such by any prospective purchaser. The services, systems and appliances shown have not been tested and no guarantee as to their operability or efficiency can be given.
Made with Metropix ©2024



These particulars are believed to be accurate but they are not guaranteed and do not form a contract. Neither Jordan Fishwick nor the vendor or lessor accept any responsibility in respect of these particulars, which are not intended to be statements or representations of fact and any intending purchaser or lessee must satisfy himself by inspection or otherwise as to the correctness of each of the statements contained in these particulars. Any floorplans on this brochure are for illustrative purposes only and are not necessarily to scale.

Offices at: Chorlton, Didsbury, Disley, Hale, Glossop, Macclesfield, Manchester Deansgate, Manchester Whitworth Street, New Mills, Sale, Wilmslow and Withington

14 Market Street, Disley, Cheshire, SK12 2AA

01663 76 78 78

disley@jordanfishwick.co.uk

www.jordanfishwick.co.uk