



jordan fishwick

DIDSBURY
Wilmslow Road



**Wilmslow Road,
Didsbury, M20 2RJ**

Guide Price £279,950

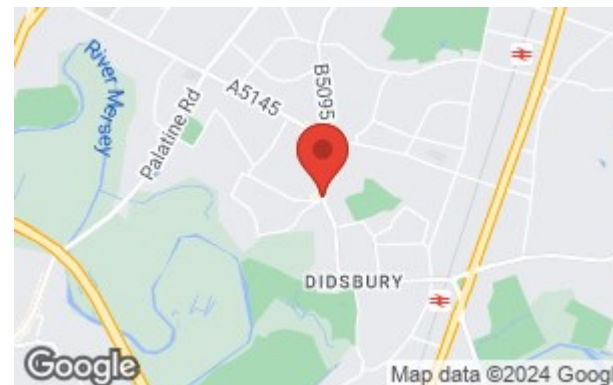


The Property

A MOST APPEALING, THREE BEDROOM, FIRST FLOOR APARTMENT FORMING PART OF THE HIGHLY DESIRABLE VICEROY COURT, BEING WITHIN A 'STONE'S THROW' OF DIDSBURY VILLAGE AND ADJACENT TO DIDSBURY PARK. 751 sq ft. This particular property enjoys a first floor position and benefits include uPVC double glazing and gas central heating, with the tastefully presented living space in outline comprising:- Entrance hall with cloaks space, spacious lounge/dining room with bay window, fitted kitchen, three bedrooms, the main with a bay window overlooking the communal gardens, and bathroom with white three piece suite. In addition, there is ample residents parking and delightful communal grounds and gardens. *NO ONWARD CHAIN*

Directions

M20 2RJ



- Three bedroom apartment
- Didsbury Village location
- First floor position
- uPVC double glazing
- Gas central heating
- Spacious living room
- Fitted kitchen & bathroom
- Ample residents parking
- Attractive communal gardens
- NO ONWARD CHAIN

Postcode - M20 2RJ

EPC Rating - C

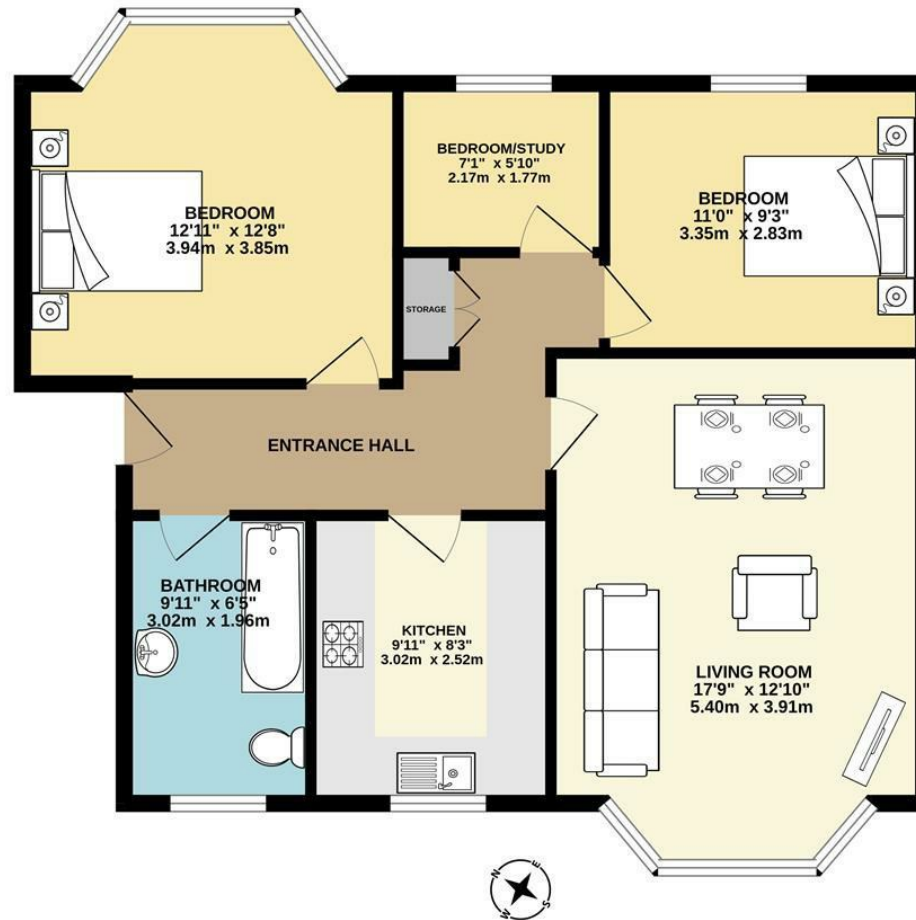
Floor Area - 751.00 sq ft

Local Authority - Manchester City Council

Council Tax - C



FIRST FLOOR
751 sq.ft. (69.8 sq.m.) approx.



TOTAL FLOOR AREA : 751 sq.ft. (69.8 sq.m.) approx.
Measurements are approximate. Not to scale. Illustrative purposes only.
Made with Metropix ©2024



These particulars are believed to be accurate but they are not guaranteed and do not form a contract. Neither Jordan Fishwick nor the vendor or lessor accept any responsibility in respect of these particulars, which are not intended to be statements or representations of fact and any intending purchaser or lessee must satisfy himself by inspection or otherwise as to the correctness of each of the statements contained in these particulars. Any floorplans on this brochure are for illustrative purposes only and are not necessarily to scale.

Offices also at: Wilmslow, Macclesfield, Hale, Sale, Chorlton, Glossop, Manchester & Salford

757-759 Wilmslow Road, Didsbury Village, Manchester

0161 445 4480

didsbury@jordanfishwick.co.uk
www.jordanfishwick.co.uk