



*Jordan fishwick*

**DIDSBURY**  
Essex Avenue



# Essex Avenue, Didsbury, M20 6AN

Guide Price £695,000



## The Property

A SUBSTANTIAL and well maintained, double fronted, FOUR BEDROOM semi detached family home located on a SELECT tree lined cul-de-sac adjacent to Fog Lane Park and within a short stroll of DIDSBURY VILLAGE. 1637sqft. The property enjoys a generous corner plot with gardens to three sides and a driveway to the rear which in turn leads to a single brick built garage, accessed from Fog Lane. In outline :- Covered porch, spacious reception hallway with turning stairs to the first floor, dining room with bay-window, separate large living room with garden views and a dining area to the rear of the hallway leading to the fitted kitchen. The first floor landing gives way to the four bedrooms, the main enjoying an en-suite bathroom, a further family bathroom and separate WC.

## Directions

M20 6AN



- Substantial semi detached property
- Double fronted
- Generous corner plot
- Driveway & garage
- Cul-de-sac location
- Four bedrooms
- Two bathrooms
- Generous lounge & separate dining room
- Reception hallway
- Close to Fog Lane Park & Didsbury Village

Postcode - M20 6AN

EPC Rating - C

Floor Area - 1637.00 sq ft

Local Authority - Manchester City Council

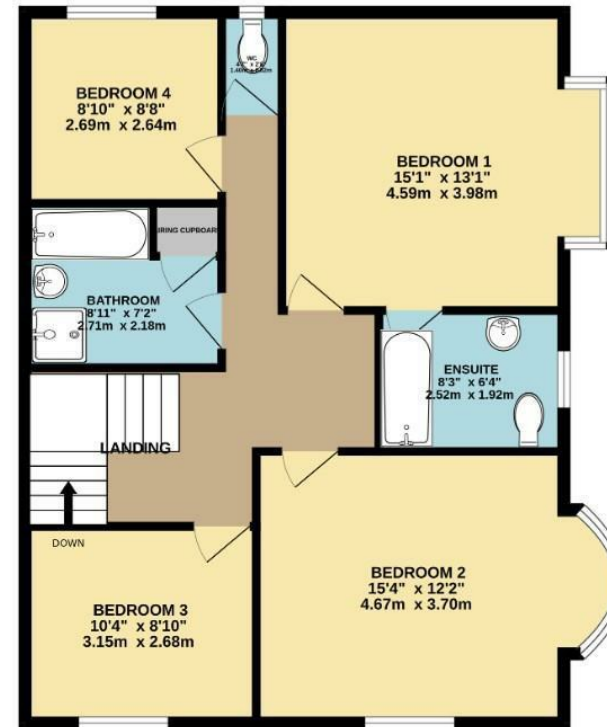
Council Tax - E



GROUND FLOOR  
824 sq.ft. (76.6 sq.m.) approx.



1ST FLOOR  
797 sq.ft. (74.0 sq.m.) approx.



TOTAL FLOOR AREA: 1621 sq.ft. (150.6 sq.m.) approx.  
Measurements are approximate. Not to scale. Illustrative purposes only  
Made with Metropix ©2024



These particulars are believed to be accurate but they are not guaranteed and do not form a contract. Neither Jordan Fishwick nor the vendor or lessor accept any responsibility in respect of these particulars, which are not intended to be statements or representations of fact and any intending purchaser or lessee must satisfy himself by inspection or otherwise as to the correctness of each of the statements contained in these particulars. Any floorplans on this brochure are for illustrative purposes only and are not necessarily to scale.

Offices also at: Wilmslow, Macclesfield, Hale, Sale, Chorlton, Glossop, Manchester & Salford

757-759 Wilmslow Road, Didsbury Village, Manchester

0161 445 4480

didsbury@jordanfishwick.co.uk  
www.jordanfishwick.co.uk