



Jordan fishwick

Apt 409 Michigan Point Tower D, Michigan
£1,350 Per Calendar Month



Michigan Point Tower D Salford M50 2HL

£1,350 Per Calendar Month

The Property

Available Now. Jordan Fishiwck presents this immaculate 4th Floor Two bed apartment in the heart of Media City. The property is situated opposite the Harbour City tram stop, allowing seamless connections to Greater Manchester, making it the perfect home for dynamic working professionals across the city. Or the perfect location for Mature Students.

The property comprises of two Double bedrooms, the master with en-suite shower room, with a stylish main bathroom with bath and mixer shower over. The apartment is furnished to a good standard throughout and is in excellent condition. No Parking. No Pets Allowed. Council Tax Band C. EPC Rating B.


There is an onsite gym, cinema room, and co-working space, all inclusive of your rent.

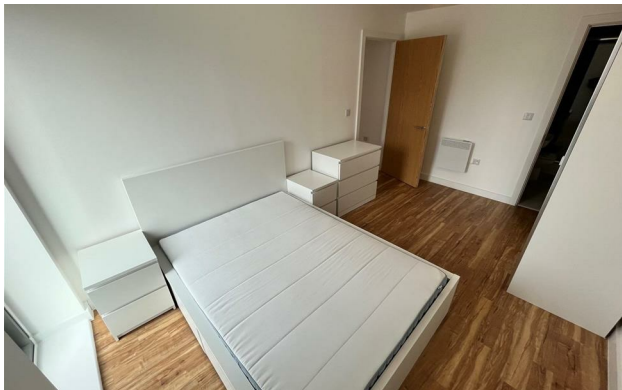
VIDEO/ PHOTO OFFERS NOT ACCEPTED - PLEASE CALL TO BOOK A VIEWING



- Available Now
- 4th Floor Apartment
- Two Double Bedrooms
- Fully Furnished
- No parking
- Close to Tram Stops
- Media City Location
- On site Gym & Cinema Room
- Tax Band C



Energy Efficiency Rating		
	Current	Potential
Very energy efficient - lower running costs		
(92 plus) A		
(81-91) B	81	81
(69-80) C		
(55-68) D		
(39-54) E		
(21-38) F		
(1-20) G		
Not energy efficient - higher running costs		
England & Wales	EU Directive 2002/91/EC 	





These particulars are believed to be accurate but they are not guaranteed and do not form a contract. Neither Jordan Fishwick nor the vendor or lessor accept any responsibility in respect of these particulars, which are not intended to be statements or representations of fact and any intending purchaser or lessee must satisfy himself by inspection or otherwise as to the correctness of each of the statements contained in these particulars. Any floorplans on this brochure are for illustrative purposes only and are not necessarily to scale.

Offices at: Offices at Chorlton, Didsbury, Disley, Hale, Glossop, Macclesfield, Manchester Deansgate, Manchester Whitworth Street, New Mills, Sale, Wilmslow and Withington