



CITY SOUTH

Jordan fishwick

City South, 39 City Road East, M15 4QE
£995 Per Month



City South Southern Gateway M15 4QE

£995 Per Month



The Property


Please follow link to video walk-through... <https://youtu.be/6pMJm-D7mF8>

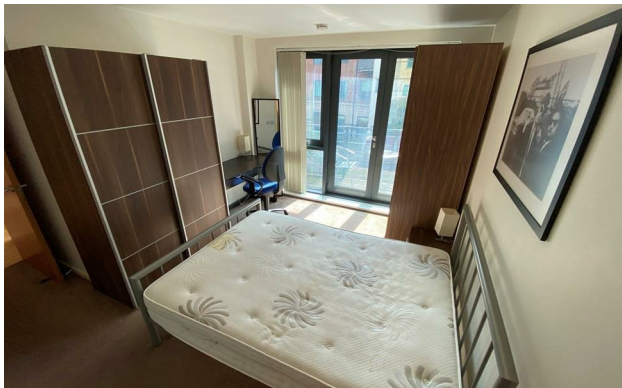
Available Late April. This first floor, two bedroom apartment in the popular City South development is in excellent condition and furnished to a high standard. The apartment offers ideal accommodation for sharers or a professional couple, featuring large entrance hall, living room with laminate flooring, kitchen has quality wall and base units with washing machine, dryer and dishwasher. There are two double bedrooms with the master having en-suite shower room and a balcony overlooking the internal courtyard. Family bathroom with shower attachment. No parking. 12 month contracts only. Tax Band D.



- Available Late April
- Ensuite To Master
- Two Double Bedrooms
- Balcony
- Tax Band D
- EPC Rating C



| Energy Efficiency Rating | | |
|---|---|-----------|
| | Current | Potential |
| Very energy efficient - lower running costs | | |
| (92 plus) A | | |
| (81-91) B | | |
| (69-80) C | | |
| (55-68) D | | |
| (39-54) E | | |
| (21-38) F | | |
| (1-20) G | 1 | 1 |
| Not energy efficient - higher running costs | | |
| England & Wales | EU Directive 2002/91/EC  | |





These particulars are believed to be accurate but they are not guaranteed and do not form a contract. Neither Jordan Fishwick nor the vendor or lessor accept any responsibility in respect of these particulars, which are not intended to be statements or representations of fact and any intending purchaser or lessee must satisfy himself by inspection or otherwise as to the correctness of each of the statements contained in these particulars. Any floorplans on this brochure are for illustrative purposes only and are not necessarily to scale.

Offices at: Offices at Chorlton, Didsbury, Disley, Hale, Glossop, Macclesfield, Manchester Deansgate, Manchester Whitworth Street, New Mills, Sale, Wilmslow and Withington