



jordan fishwick

DIDSBURY
Woodford Gardens



Woodford Gardens, Didsbury, M20 2TF

Guide Price £475,000



The Property

A traditional, bay fronted, three bedroom semi detached property enjoying a great location at the head of a quiet residential cul-de-sac which is within a short stroll of Didsbury Village, in addition to a driveway providing ample parking, generous rear garden and detached garage. The living space has been well cared for over the years, although now offers great potential to extend/enhance, subject to the required approval. Gas fired central heating is further complemented by uPVC double glazing, in outline: - Entrance porch, entrance hall with stairs leading to the first floor, lounge & separate dining room with bay windows to the front and rear, fitted kitchen, three bedrooms and a shower room with white suite and chrome fittings. Externally, a flagged driveway provides ample parking and extends to the side, in turn leading to the detached garage. The rear garden is of a good size with a flagged patio area, lawned section and flowerbeds.

Directions

M20 2TF



- Bay fronted semi detached
- Three bedrooms
- Lounge & separate dining room
- Fitted kitchen & shower room
- Gas central heating
- uPVC double glazing
- Generous rear garden
- Flagged driveway & detached garage
- Cul-de-sac location close to the Village
- Council Tax Band - D, EPC Rating - D

Postcode - M20 2TF

EPC Rating - D

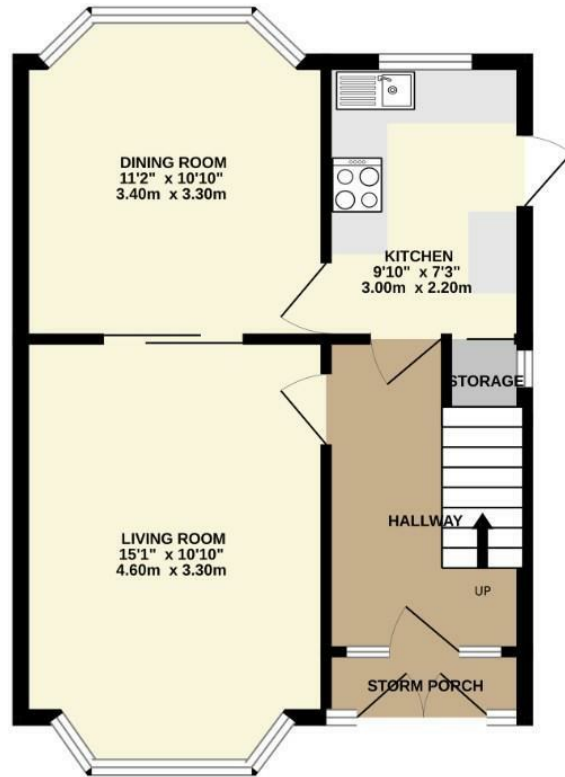
Floor Area - 882.00 sq ft

Local Authority - Manchester City Council

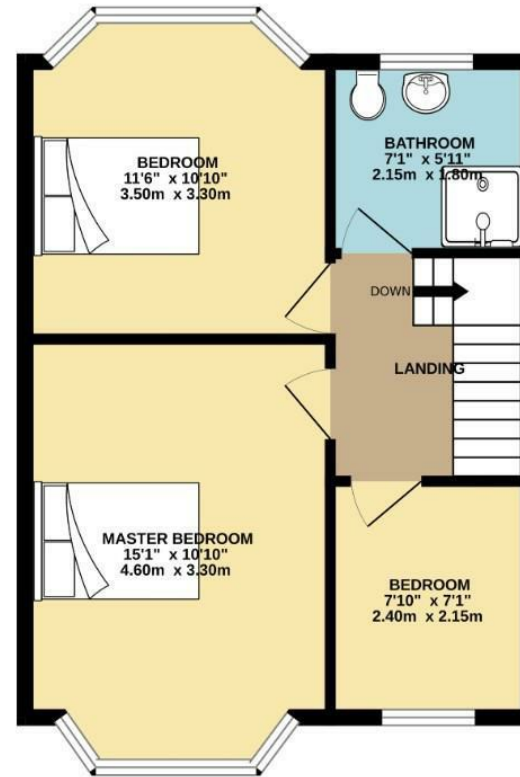
Council Tax - D



GROUND FLOOR
441 sq.ft. (40.9 sq.m.) approx.



1ST FLOOR
441 sq.ft. (40.9 sq.m.) approx.



TOTAL FLOOR AREA : 881 sq.ft. (81.9 sq.m.) approx.
Measurements are approximate. Not to scale. Illustrative purposes only
Made with MetroPix ©2024



These particulars are believed to be accurate but they are not guaranteed and do not form a contract. Neither Jordan Fishwick nor the vendor or lessor accept any responsibility in respect of these particulars, which are not intended to be statements or representations of fact and any intending purchaser or lessee must satisfy himself by inspection or otherwise as to the correctness of each of the statements contained in these particulars. Any floorplans on this brochure are for illustrative purposes only and are not necessarily to scale.

Offices also at: Wilmslow, Macclesfield, Hale, Sale, Chorlton, Glossop, Manchester & Salford

757-759 Wilmslow Road, Didsbury Village, Manchester

0161 445 4480

didsbury@jordanfishwick.co.uk
www.jordanfishwick.co.uk