



Premier Inn

Premier Inn



jordan fishwick

Apt 270 The Edge, Clowes Street, Salford, M3 5NG

EWS1 FORM AVAILABLE / MORTGAGE BUYERS INVITED

Jordan Fishwick are pleased to offer for sale this stunning, larger than average 9th floor apartment in the stunning Edge development, right on the cusp of Central Manchester and Spinningfields. LUXURY AND LOCATION! The apartment block offers a high standard of living with benefits like 24 hour concierge, stunning roof garden and two lifts to all floors (in each block). The apartment is located on the corner of the building offering dual aspect views and sunny wrap around balcony overlooking the communal gardens and river. The apartment has been lovingly maintained since owned, and the lucky buyer will benefit from the immaculate bathroom and stunning kitchen. Large living space with dining space. Master bedroom with built in wardrobes and second double bedroom. Stunning walnut wooden flooring throughout. SECURE UNDERGROUND PARKING.

Price £320,000

Viewing arrangements

Viewing strictly by appointment through the agent

245 Deansgate, Manchester, M3 4EN 0161 833 9499 opt 3

Entrance Hallway

Wooden flooring with deep storage cupboard housing heating system. Access to all rooms

Living/Kitchen

24'4" x 15'5" max

This bright corner room has views over the communal garden and benefits from the morning sunshine. Wooden flooring with patio doors onto the balcony. TV points, open through to the kitchen, Lovely wall and base units with built in oven, hob and extractor hood. fridge/freezer, microwave and dishwasher.

Stainless steel sink unit. Low level radiators

Master Bedroom

12'11" x 11'2"

Wooden flooring. This bedroom benefits from patio doors leading onto small balcony, built in sliding wardrobes and TV point Radiator

En-Suite Bathroom

8'0" x 10'4"

Full en-suite with bathroom, walk in shower, wash hand basin and w.c Tiled floor and fitted mirror

Bedroom Two

12'1" x 8'6"

Wooden flooring and radiator

Shower Room

8'0" x 6'10"

Off the hallway this shower room has tiled walk in shower, wash hand basin and w.c

Externally

Wrap around balcony, small step on balcony off the master bedroom.
Underground parking space. Concierge Desk

Additional Information

Service Charge £4260 per annum

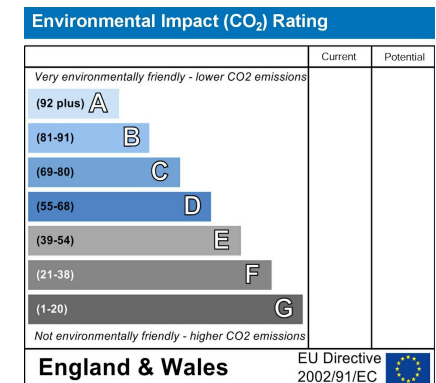
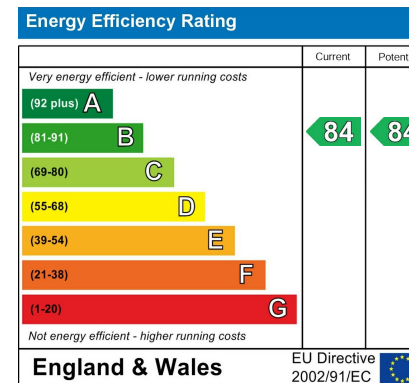
Lease 250 Years from 2005

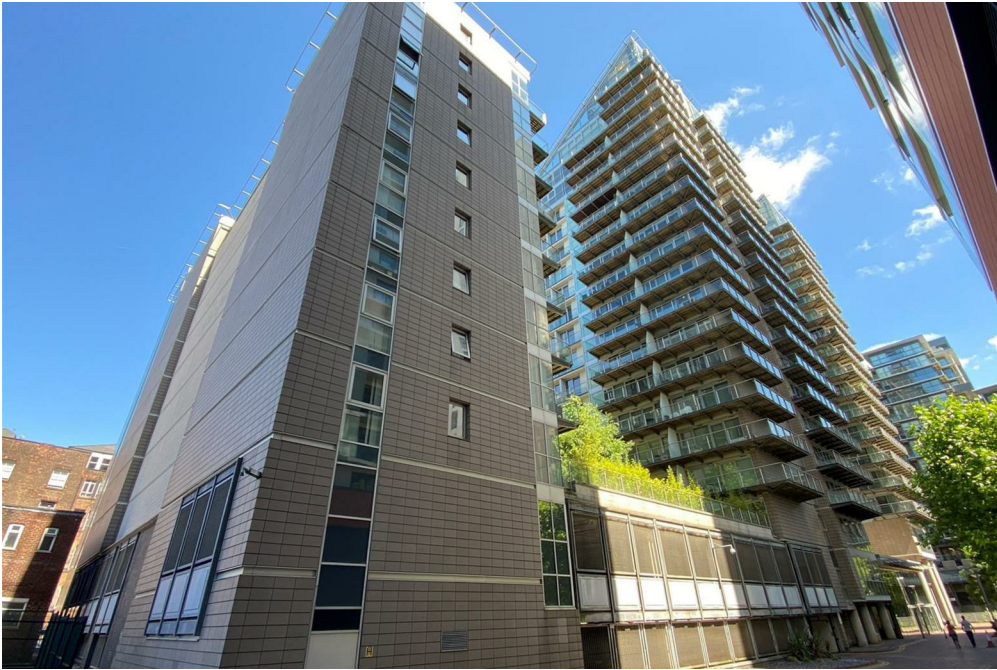
Ground Rent £250 per annum

Council Tax Band E

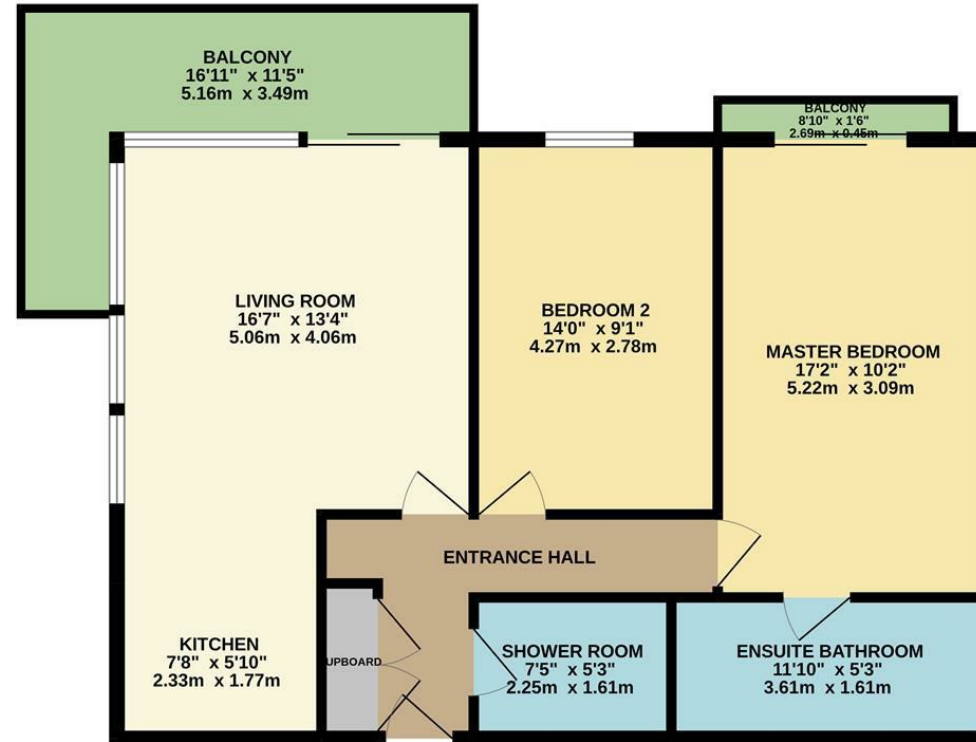
Disclaimer

IMPORTANT NOTE TO PURCHASERS: The lease, ground rent and service charges should all be checked via the solicitors for clarification. We endeavour to make our sales particulars accurate and reliable, however, they do not constitute or form part of an offer or any contract and none is to be relied upon as statements of representation or fact. The services, systems and appliances listed in this specification have not been tested by us and no guarantee as to their operating ability or efficiency is given. All measurements have been taken as guide to prospective buyers only, and are not precise. If floor plans were included, these may not be to scale and accuracy is not guaranteed. If you require clarification or further information on any points, please contact us.





GROUND FLOOR



Measurements are approximate. Not to scale. Illustrative purposes only.
Made with Metropix ©2022



These particulars are believed to be accurate but they are not guaranteed and do not form a contract. Neither Jordan Fishwick nor the vendor or lessor accept any responsibility in respect of these particulars, which are not intended to be statements or representations of fact and any intending purchaser or lessee must satisfy himself by inspection or otherwise as to the correctness of each of the statements contained in these particulars. Any floorplans on this brochure are for illustrative purposes only and are not necessarily to scale.

Offices at: Chorlton, Didsbury, Disley, Hale, Glossop, Macclesfield, Manchester Deansgate, Manchester Whitworth Street, New Mills, Sale, Wilmslow and Withington

245 Deansgate, Manchester, M3 4EN

0161 833 9499 opt 3

manchester@jordanfishwick.co.uk

www.jordanfishwick.co.uk

