

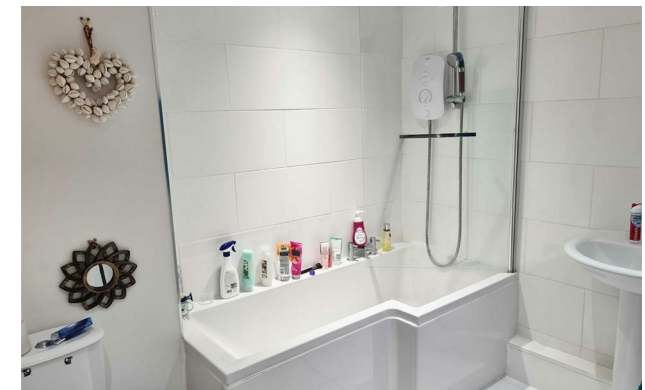


*jordan fishwick*

172 Gillbent Road, Cheadle Hulme, SK8  
PCM £1,200 PCM

# Gillbent Road Cheshire SK8 6NJ

£1,200 PCM



UNFURNISHED AVAILABLE NOW - VIEWING RECOMMENDED

This spacious two double bedroom ground floor apartment is ideally located for the A34 and offers excellent access to Cheadle Hulme and Bramhall and is only a short drive to Wilmslow, Manchester Airport and the motorway networks.

Entrance hall with storage, kitchen with electric hob and oven, spacious lounge, two double bedrooms and bathroom with shower over bath.

Communal gardens and parking

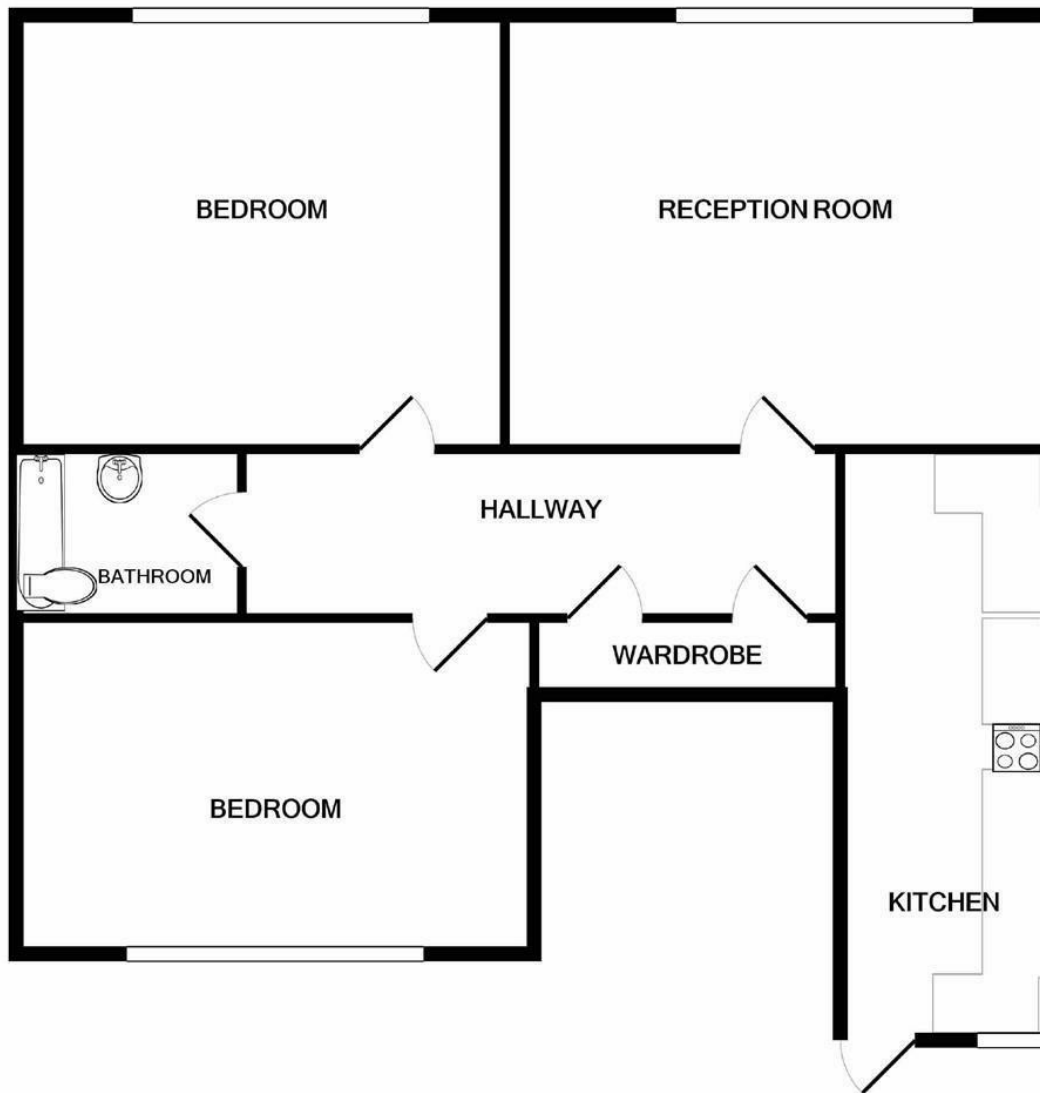
Contact Wilmslow 01625 536300 £1200.00pcm



- GROUND FLOOR
- TWO DOUBLE BEDROOMS
- CLOSE TO A34 AND LOCAL SHOPS
- MODERN KITCHEN AND BATHROOM
- POPULAR LOCATION
- COUNCIL TAX B



Energy Efficiency Rating		
	Current	Potential
Very energy efficient - lower running costs		
(92 plus) <b>A</b>		
(81-91) <b>B</b>	79	80
(69-80) <b>C</b>		
(55-68) <b>D</b>		
(39-54) <b>E</b>		
(21-38) <b>F</b>		
(1-20) <b>G</b>		
Not energy efficient - higher running costs		
<b>England &amp; Wales</b>	EU Directive 2002/91/EC	



TOTAL APPROX. FLOOR AREA 1014 SQ.FT. (94.2 SQ.M.)

Measurements are approximate. Not to scale. Illustrative purposes only  
Made with Metropix ©2020



These particulars are believed to be accurate but they are not guaranteed and do not form a contract. Neither Jordan Fishwick nor the vendor or lessor accept any responsibility in respect of these particulars, which are not intended to be statements or representations of fact and any intending purchaser or lessee must satisfy himself by inspection or otherwise as to the correctness of each of the statements contained in these particulars. Any floorplans on this brochure are for illustrative purposes only and are not necessarily to scale.

Offices at: Chorlton, Didsbury, Disley, Hale, Glossop, Macclesfield, Manchester Deansgate, Manchester Whitworth Street, New Mills, Sale, Wilmslow and Withington

01625 536300

wilmslow@jordanfishwick.co.uk

www.jordanfishwick.co.uk