



jordan fishwick

DIDSBURY VILLAGE
Plowley Close



Plowley Close, Didsbury Village, M20 2DB

Guide Price £650,000



The Property

A WELL PRESENTED Georgian Style townhouse with newly installed double glazing, offering EXTENSIVE LIVING SPACE over three floors, set in a SUPERB LOCATION with off road parking for 2 cars, positioned on a select development, being WITHIN A SHORT STROLL of Didsbury Village. 1585 sq ft. The living space is warmed by gas central heating and in outline comprise: Entrance porch, hallway with downstairs WC, impressive L-shaped open plan living/dining/kitchen area with a breakfast bar, comprehensive range of fitted units and French doors opening to the rear garden/patio. At first floor level is the superb light and spacious living area that could easily be changed to provide further bedrooms and bathrooms if required. With the second floor landing giving way to three bedrooms and the family bathroom with modern suite. No chain.

Directions

M20 2DB



- Impressive Georgian style townhouse
- Open plan living area
- Comprehensively fitted kitchen
- Select private development
- Three double bedrooms with potential for more
- Ideal Village location
- Driveway for 2 cars
- Adaptable accommodation
- NO ONWARD CHAIN

Postcode - M20 2DB

EPC Rating - C

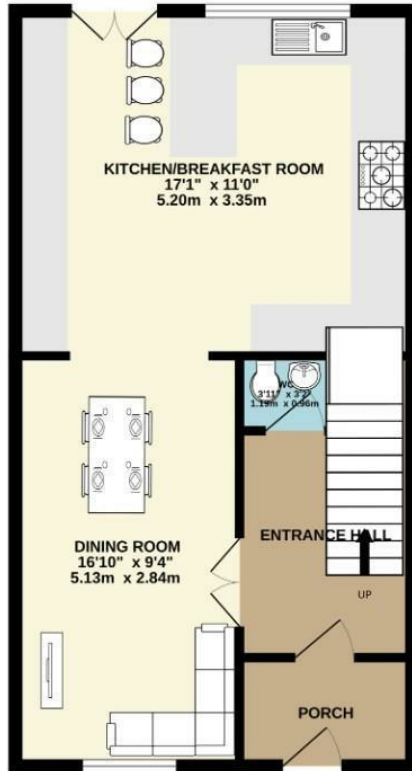
Floor Area - 1585.00 sq ft

Local Authority - Manchester City council

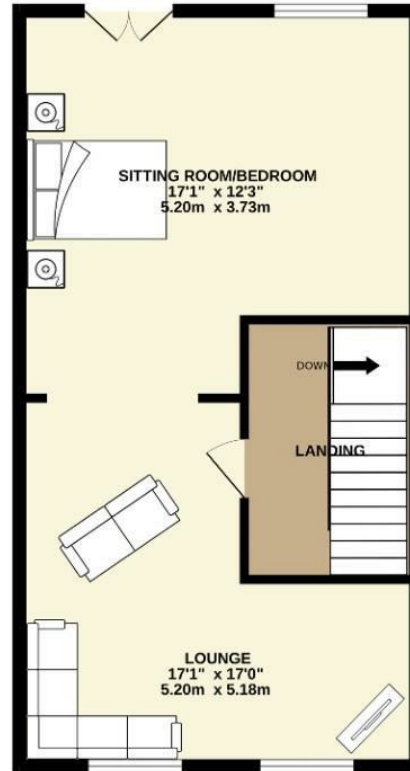
Council Tax - F



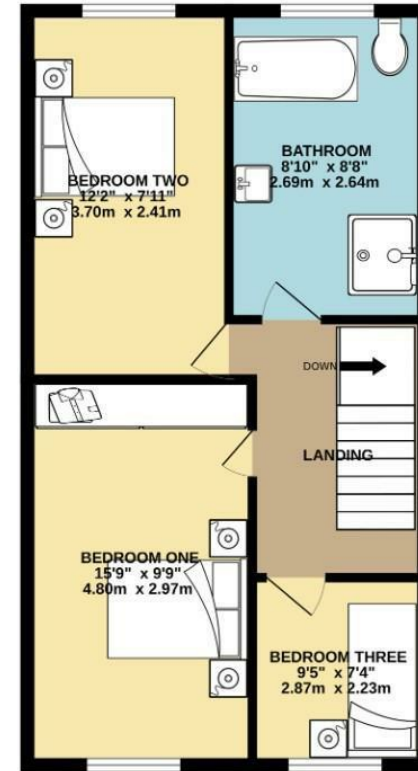
GROUND FLOOR
528 sq.ft. (49.1 sq.m.) approx.



1ST FLOOR
528 sq.ft. (49.1 sq.m.) approx.



2ND FLOOR
528 sq.ft. (49.0 sq.m.) approx.



TOTAL FLOOR AREA : 1585 sq.ft. (147.2 sq.m.) approx.
Measurements are approximate. Not to scale. Illustrative purposes only
Made with Metropix ©2024



These particulars are believed to be accurate but they are not guaranteed and do not form a contract. Neither Jordan Fishwick nor the vendor or lessor accept any responsibility in respect of these particulars, which are not intended to be statements or representations of fact and any intending purchaser or lessee must satisfy himself by inspection or otherwise as to the correctness of each of the statements contained in these particulars. Any floorplans on this brochure are for illustrative purposes only and are not necessarily to scale.

Offices also at: Wilmslow, Macclesfield, Hale, Sale, Chorlton, Glossop, Manchester & Salford

757-759 Wilmslow Road, Didsbury Village, Manchester

0161 445 4480

didsbury@jordanfishwick.co.uk
www.jordanfishwick.co.uk