



jordan fishwick

DIDSBURY
208 Palatine Road



208 Palatine Road, Didsbury, M20 2WF

Guide Price £265,000

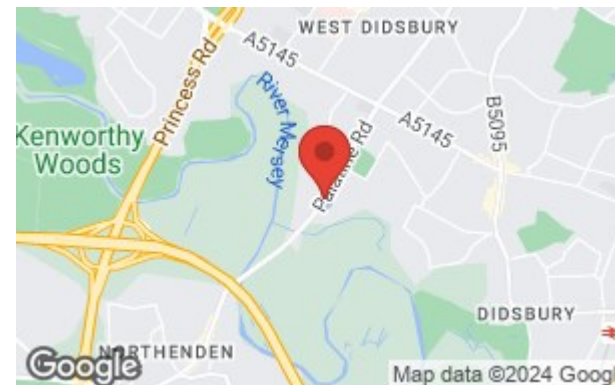


The Property

A stylish, two double bedroom, two bathroom apartment forming part of a sought after gated development known as Riverside Lodge. This apartment enjoys a top floor position with lift access to all floors, the living space in outline comprising :- L-shaped entrance hallway with built in storage cupboard, a large open plan kitchen, dining and living space with integrated appliances and patio doors opening to a generous private balcony, master bedroom with further access to the balcony and en-suite shower room and a good sized second double bedroom linking to the 'Jack and Jill' bathroom. The development is secure and gated with an underground car park. Its location provides easy access to Didsbury and West Didsbury Village with a Metrolink station further along Palatine Road and the M56 nearby. **** NO ONWARD CHAIN ****

Directions

M20 2WF



- Sought after gated development
- Two double bedrooms
- Two bathrooms
- Large open plan kitchen/living area
- Generous balcony
- Top floor position
- Secure underground parking
- Lift access to all floors
- Close to both Didsbury & West Didsbury
- NO ONWARD CHAIN

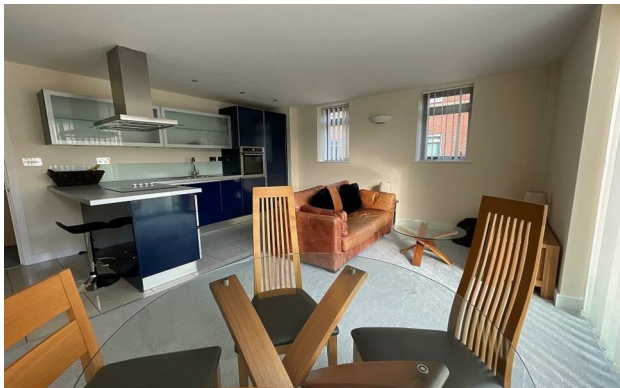
Postcode - M20 2WF

EPC Rating - C

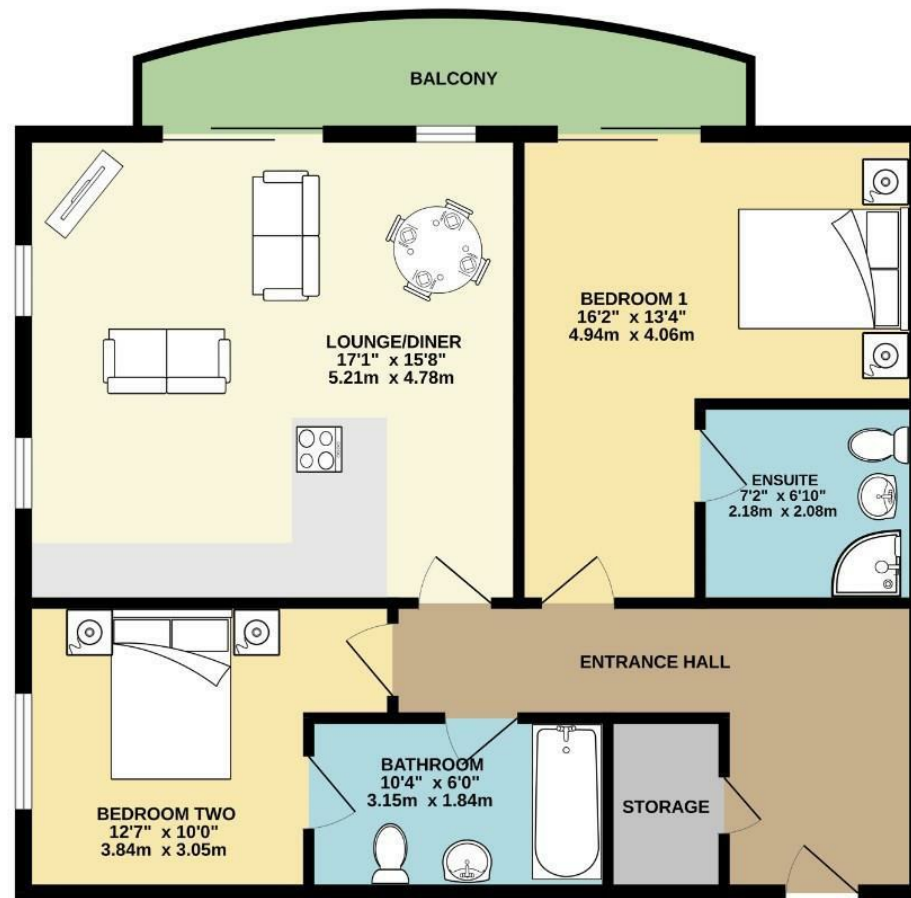
Floor Area - 809.00 sq ft

Local Authority - Manchester City Council

Council Tax - C



TOP FLOOR
809 sq.ft. (75.1 sq.m.) approx.



TOTAL FLOOR AREA : 809 sq.ft. (75.1 sq.m.) approx.
Measurements are approximate. Not to scale. Illustrative purposes only
Made with Metropix ©2024



These particulars are believed to be accurate but they are not guaranteed and do not form a contract. Neither Jordan Fishwick nor the vendor or lessor accept any responsibility in respect of these particulars, which are not intended to be statements or representations of fact and any intending purchaser or lessee must satisfy himself by inspection or otherwise as to the correctness of each of the statements contained in these particulars. Any floorplans on this brochure are for illustrative purposes only and are not necessarily to scale.

Offices also at: Wilmslow, Macclesfield, Hale, Sale, Chorlton, Glossop, Manchester & Salford

757-759 Wilmslow Road, Didsbury Village, Manchester

0161 445 4480

didsbury@jordanfishwick.co.uk
www.jordanfishwick.co.uk