



*Jordan fishwick*

Counting House Road Disley Stockport

# Counting House Road Disley Stockport SK12 2DB

£400,000



## The Property

Standing in a private corner plot within an established, popular development in Disley Village, a versatile three/four bedroom detached home. For sale with No Chain, this fabulous versatile property would suit many buyers. Views towards Kinder Scout, beautiful gardens, block paved driveway and integral garage. Pvc double glazing, gas central heating and comprising: storm porch, entrance hall, snug/bedroom, wet room, living room with dining area, fitted kitchen, first floor master bedroom with en-suite wc and two further bedrooms. Viewing highly recommended.




- Versatile Detached Home
- Excellent Location in Disley
- Views Towards Kinder Scout
- Private Corner Plot
- Three/Four Bedrooms
- Well Presented Accommodation
- Integral Garage and Block Paved Driveway
- No Chain

**Postcode** SK12 2DB

**EPC Rating** C

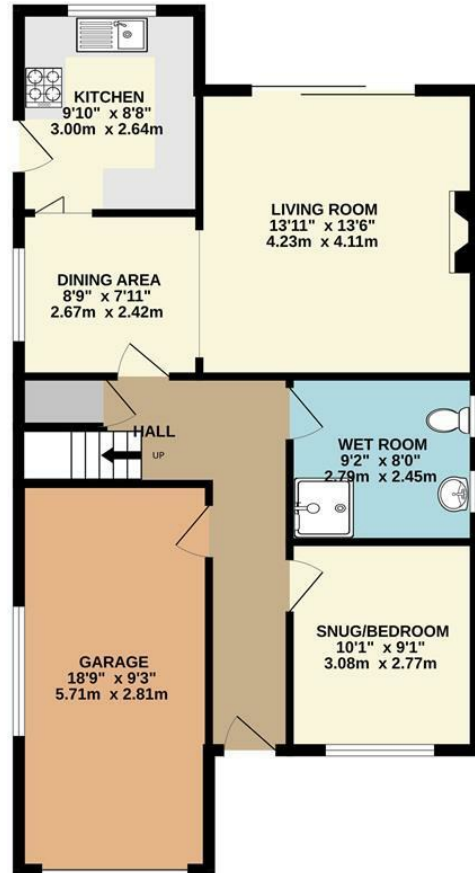
**Local Authority** Cheshire East

**Council Tax** E

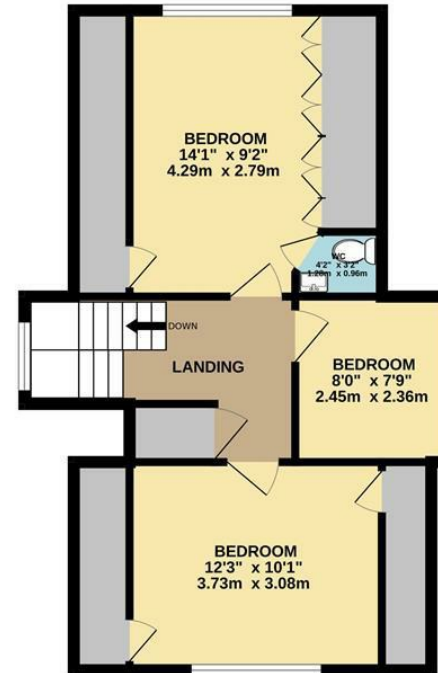
Energy Efficiency Rating		
	Current	Potential
Very energy efficient - lower running costs		
(92 plus) <b>A</b>		
(81-91) <b>B</b>		<b>82</b>
(69-80) <b>C</b>	<b>69</b>	
(55-68) <b>D</b>		
(39-54) <b>E</b>		
(21-38) <b>F</b>		
(1-20) <b>G</b>		
Not energy efficient - higher running costs		
<b>England &amp; Wales</b>	EU Directive 2002/91/EC 	



GROUND FLOOR



1ST FLOOR



Whilst every attempt has been made to ensure the accuracy of the floorplan contained here, measurements of doors, windows, rooms and any other items are approximate and no responsibility is taken for any error, omission or mis-statement. This plan is for illustrative purposes only and should be used as such by any prospective purchaser. The services, systems and appliances shown have not been tested and no guarantee as to their operability or efficiency can be given.  
Made with Metropix ©2024



These particulars are believed to be accurate but they are not guaranteed and do not form a contract. Neither Jordan Fishwick nor the vendor or lessor accept any responsibility in respect of these particulars, which are not intended to be statements or representations of fact and any intending purchaser or lessee must satisfy himself by inspection or otherwise as to the correctness of each of the statements contained in these particulars. Any floorplans on this brochure are for illustrative purposes only and are not necessarily to scale.

Offices at: Chorlton, Didsbury, Disley, Hale, Glossop, Macclesfield, Manchester Deansgate, Manchester Whitworth Street, New Mills, Sale, Wilmslow and Withington

14 Market Street, Disley, Cheshire, SK12 2AA

01663 76 78 78

disley@jordanfishwick.co.uk

www.jordanfishwick.co.uk